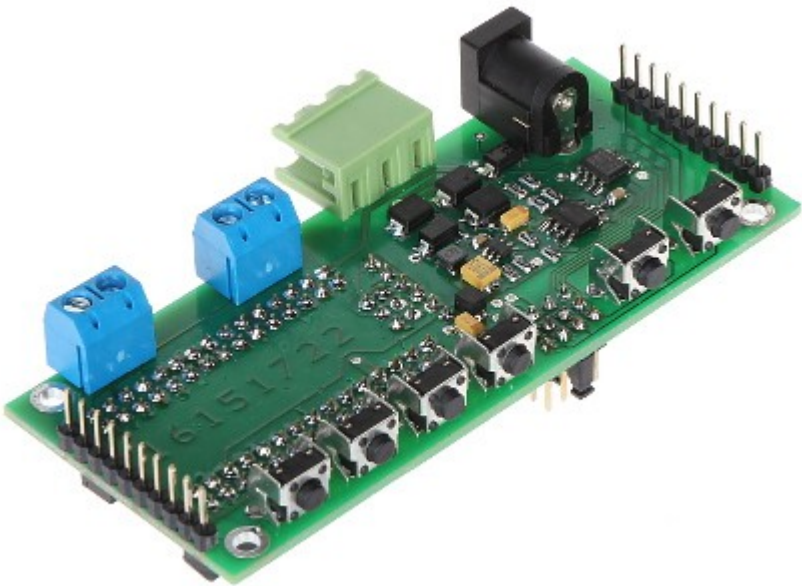


PORT-22 CONVERTER USER MANUAL

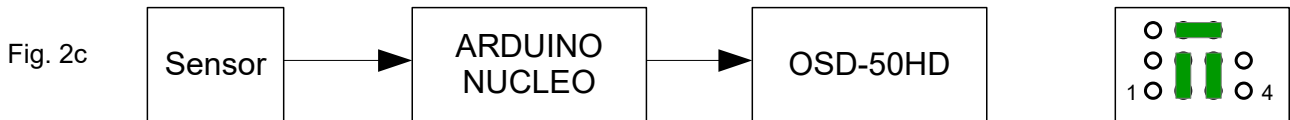
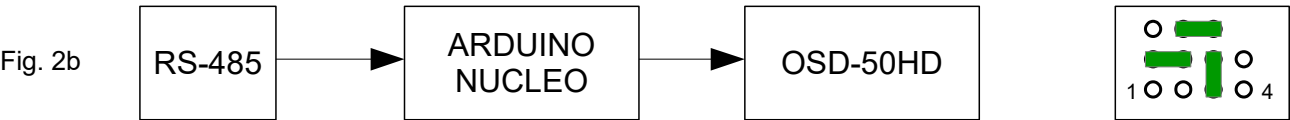
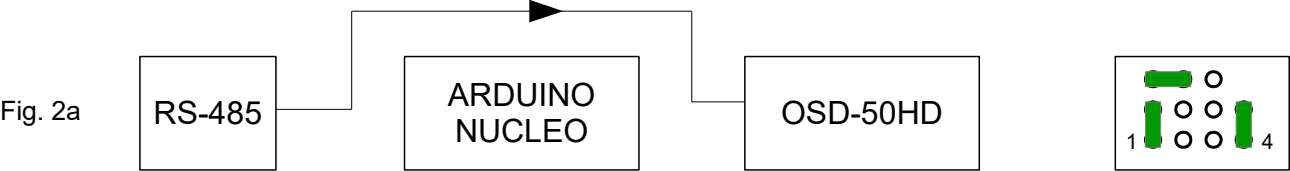
PORT-22 can be used to control, test and service OSD-50HD units and implement custom solutions based on ARDUINO or NUCLEO devices.

Six service keys for OSD-50HD unit configuration.



OSD-50HD connected to the PORT-22 converter can be controlled in different modes:

- direct RS-485 connection to OSD-50HD. For OSD-50HD firmware updates (Fig. 2a).
- RS-485 connection to ARDUINO/NUCLEO (Fig. 2b)
- direct sensor connection to ARDUINO/NUCLEO (Fig. 2c)

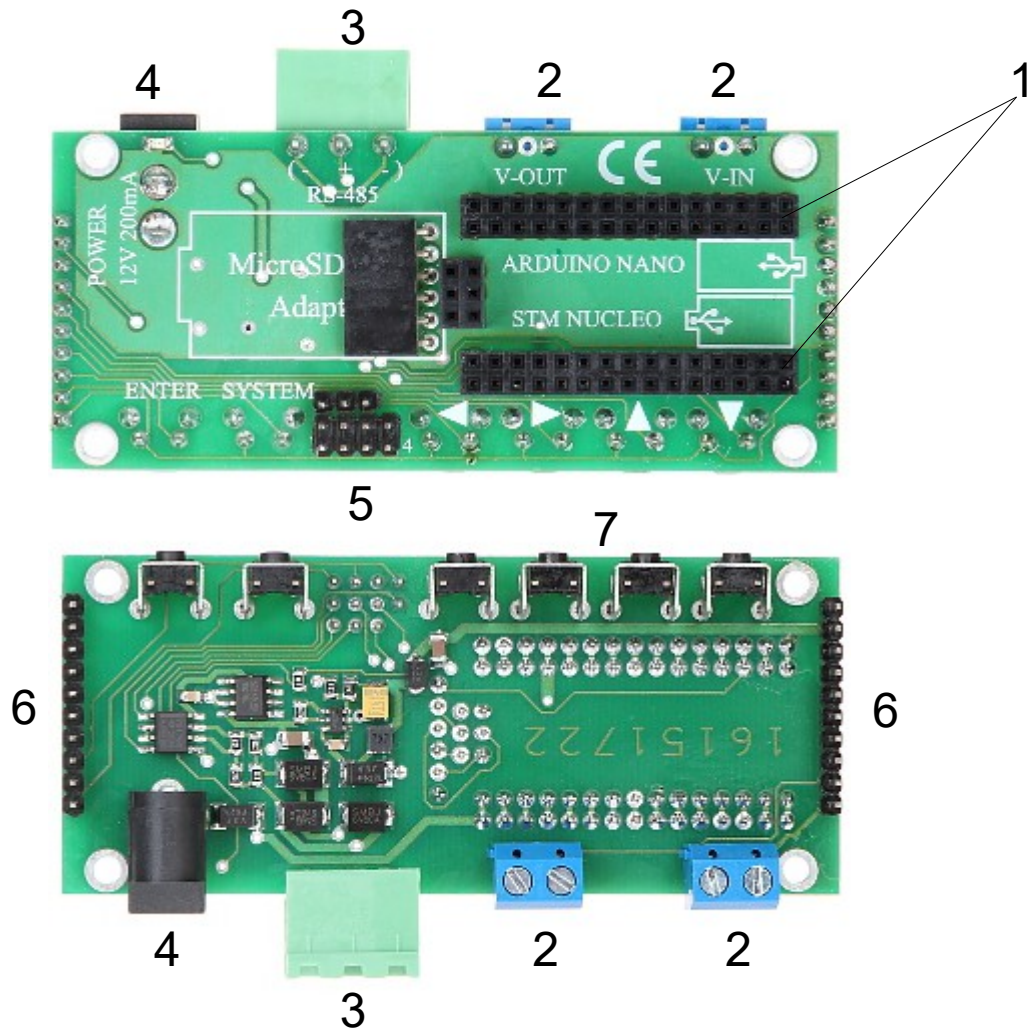


OSD-50HD with PORT-22 converter

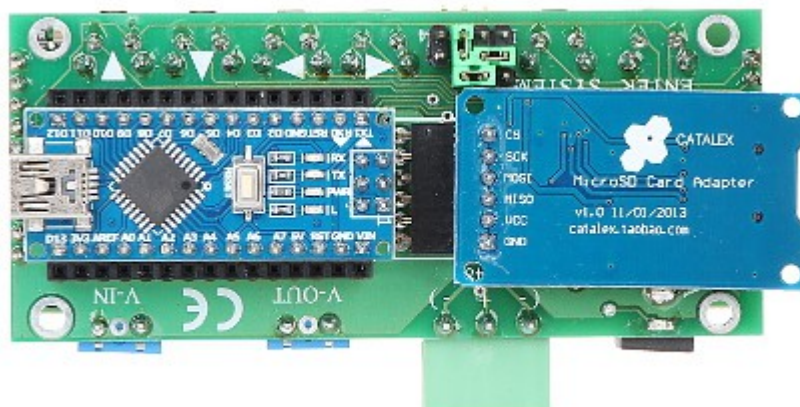


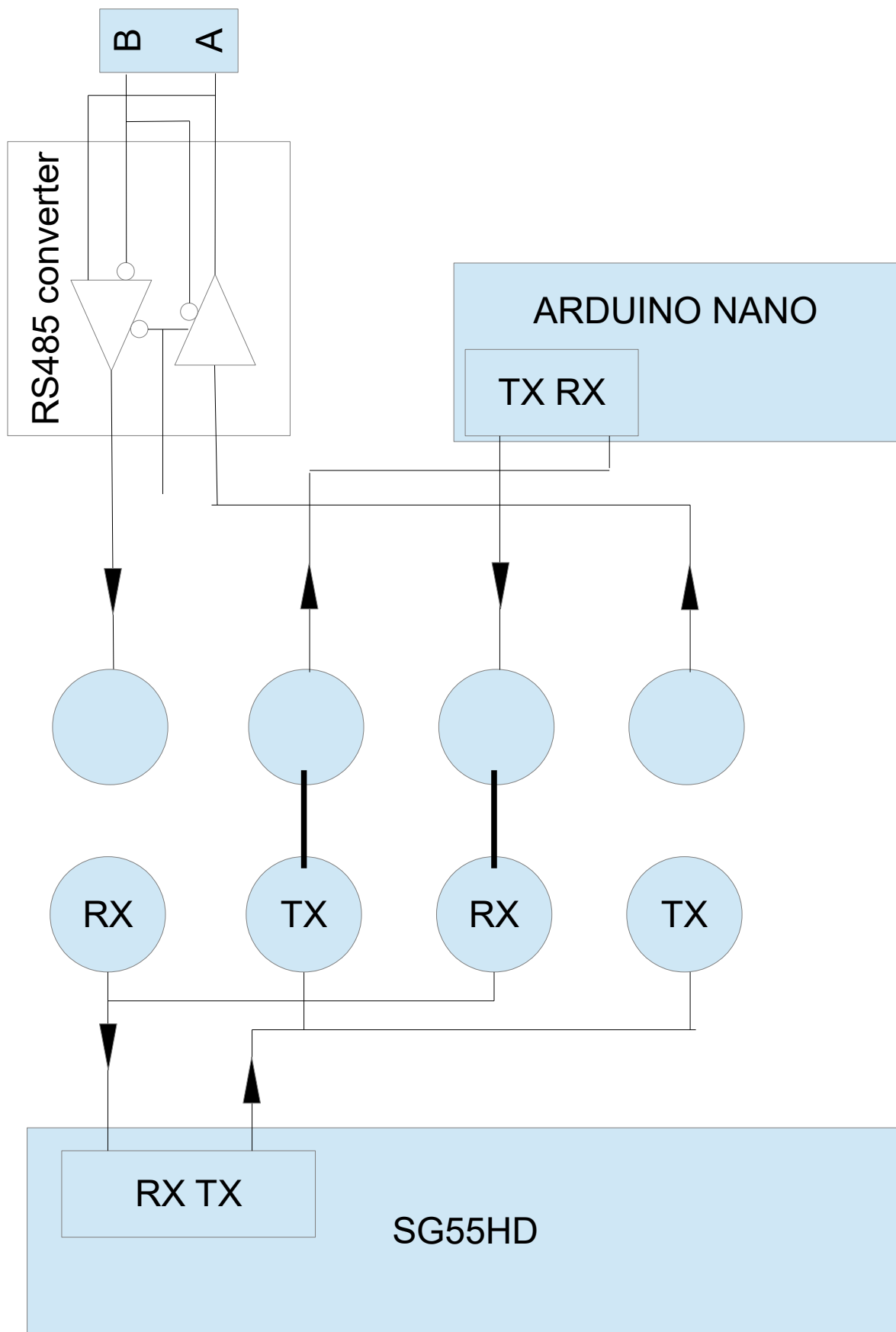
Port-22 has the following outputs:

- 1 - ARDUINO NANO and STM NUCLEO connector,
- 2 - video input and output,
- 3 - RS-485 connector,
- 4 - 12 V 200 mA power supply socket,
- 5 - configuration connector,
- 6 - connector compatible with OSD-50HD,
- 7 – service keys



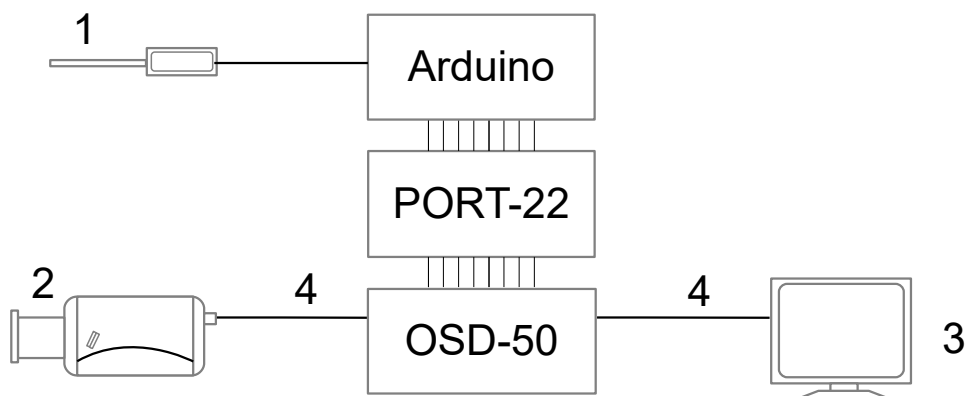
Arduino and SD card connected to the PORT-22 converter





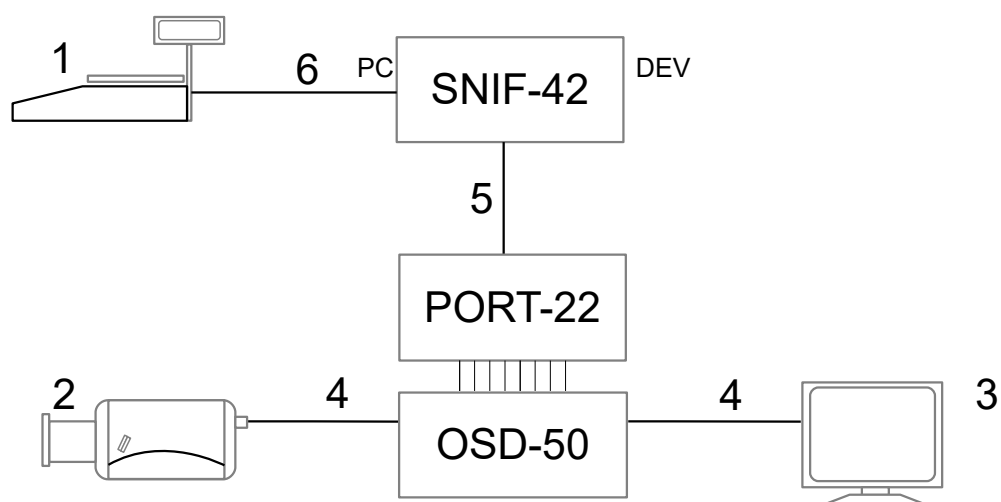
Example connection of the temperature sensor.

- 1 – Temperature sensor
- 2 – camera
- 3 – display
- 4 – video signal



Configuration with a scale

- 1 – scale
- 2 – camera
- 3 – display
- 4 – video signal
- 5 – RS-485
- 6 – RS-232



Example connection of several sensors.

- 1 – Sensors
- 2 – camera
- 3 – display
- 4 – video signal

