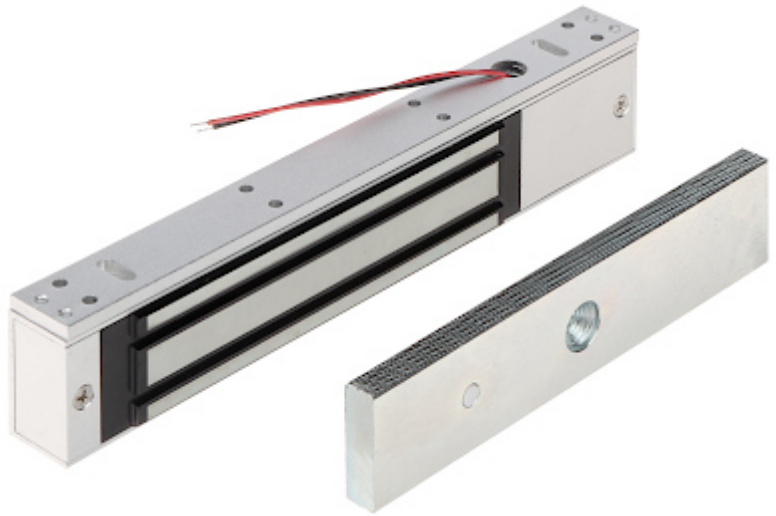


Code: ZE-280-5T

ELECTROMAGNETIC LOCK ZE-280-5T

Net: 16 838.10 HUF Gross: 16 838.10 HUF

Electromagnetic lock, surface, single. With a simple design and modern manufacturing technology, is a reliable device to lock doors and gates. Force an entry closed by lock requires the use of force of > 280 kg. It operates reversibly - it is open when power is off. The lock is composed of two elements: electromagnet (usually mounted in the frame) and lock plate (usually mounted in the door). Error free operation of the lock is a result of lack the mechanical elements, which after some time become damaged. Device is designed for indoor use only.



SPECIFICATION

Load capacity:	280 kg
Rated voltage:	12 V DC / 24 V DC
Current consumption:	500 mA / 250 mA
Main features:	<ul style="list-style-type: none">• LED indication,• The NO/NC output indicating opening the door,• Adjustable delay of closing the lock : 0 s ... 32 s - Precision potentiometer adjustment
Weight:	1.73 kg (total)
Dimensions:	<ul style="list-style-type: none">• 250 x 47 x 28 mm (electromagnetic lock)• 180 x 38 x 12 mm (metal plate)
Guarantee:	2 years

PRESENTATION



Internal view:

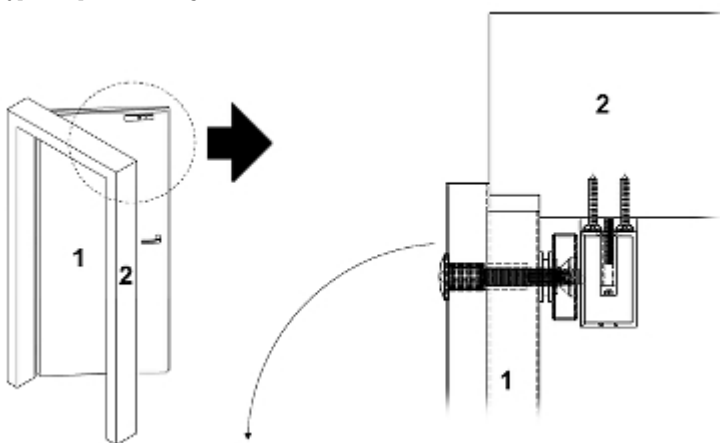
DELTA-OPTI Monika Matysiak; <https://www.delta.poznan.pl>
POL; 60-713 Poznań; Graniczna 10
e-mail: delta-opti@delta.poznan.pl; tel: +(48) 61 864 69 60



The power delay of the lock can be set with the potentiometer in the range of 0 ... 32s
 Dimensions:



Typical operation diagram:

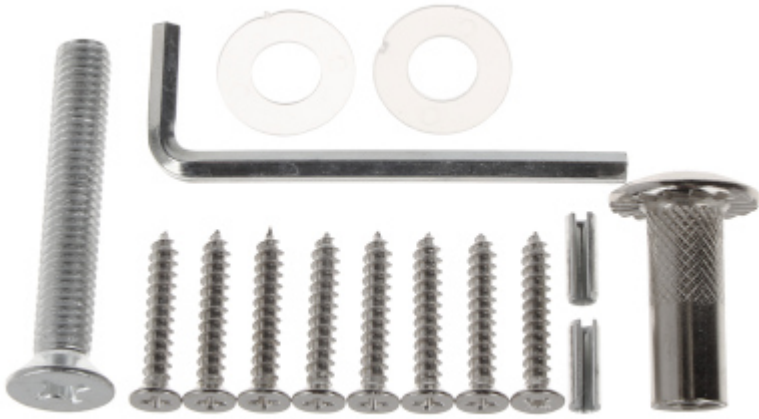


- 1. Door
- 2. Door-frame

Should pay attention to rubber pads mounted between the door and the movable element of the lock. These pads ensure proper fit the lock elements with the door when it is closed.

In the kit:

DELTA-OPTI Monika Matysiak; <https://www.delta.poznan.pl>
 POL; 60-713 Poznań; Graniczna 10
 e-mail: delta-opti@delta.poznan.pl; tel: +(48) 61 864 69 60



PACKAGE

Dimensions (L x W x H): 0x0x0 mm	Gross Weight: 0 kg
----------------------------------	--------------------

