

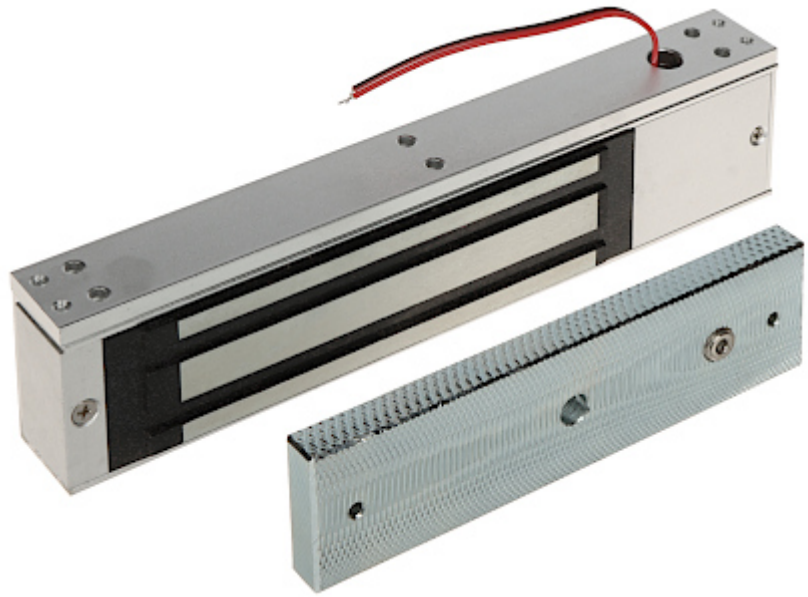
Code: ZE-320

ELECTROMAGNETIC LOCK **ZE-320**

Net: 202.30 PLN Gross: 202.30 PLN

Electromagnetic lock, surface, single. With a simple design and modern manufacturing technology, is a reliable device to lock doors and gates. Force an entry closed by lock requires the use of force of > 320 kg. It operates reversibly - it is open when power is off. The lock is composed of two elements: electromagnet (usually mounted in the frame) and lock plate (usually mounted in the door). Error free operation of the lock is a result of lack the mechanical elements, which after some time become damaged.

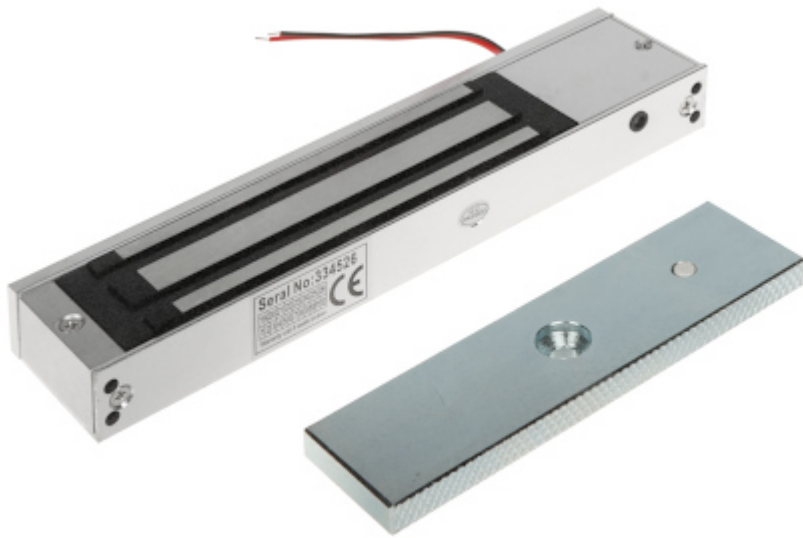
Device is designed for indoor use only.



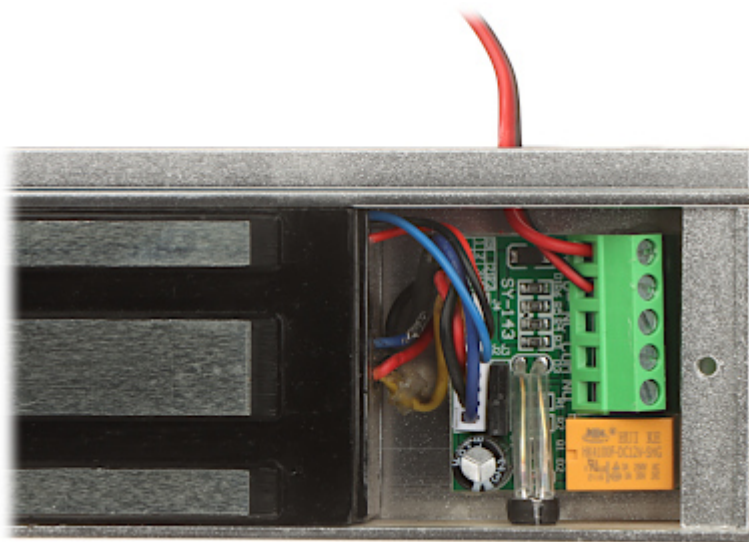
SPECIFICATION

Load capacity:	320 kg
Rated voltage:	12 V DC / 24 V DC
Current consumption:	500 mA / 250 mA
Main features:	<ul style="list-style-type: none">• LED indication,• The NO/NC output indicating opening the door
Weight:	1.91 kg (total)
Dimensions:	<ul style="list-style-type: none">• 241 x 56 x 27 mm (electromagnetic lock)• 158 x 43 x 11 mm (metal plate)
Guarantee:	2 years

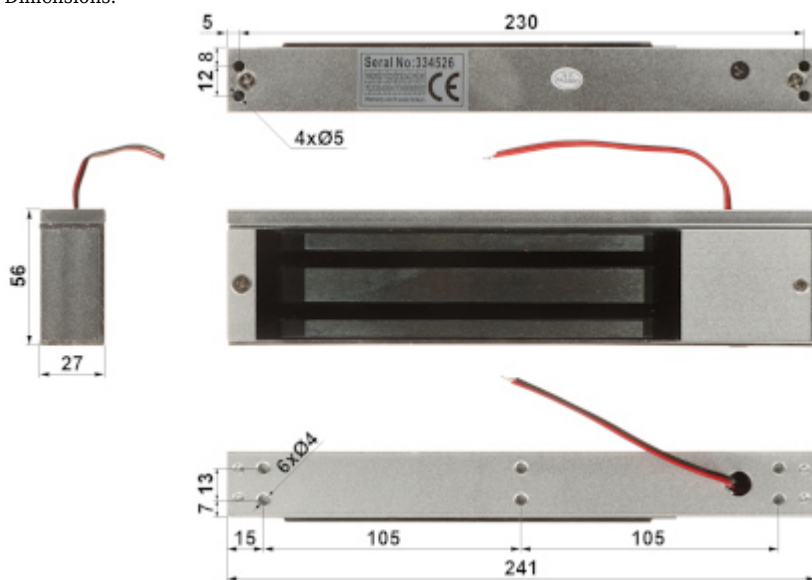
PRESENTATION

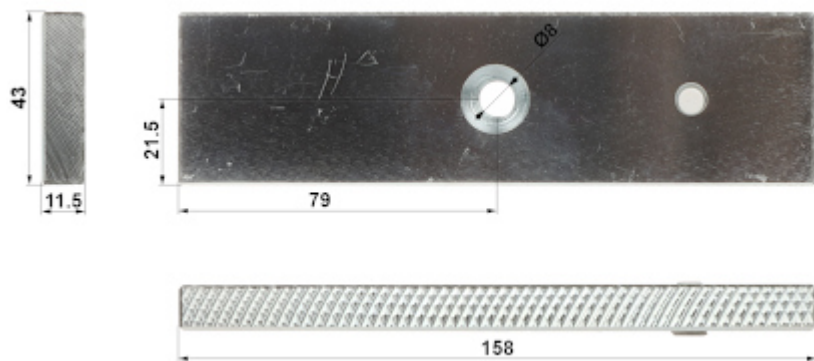


Connectors:

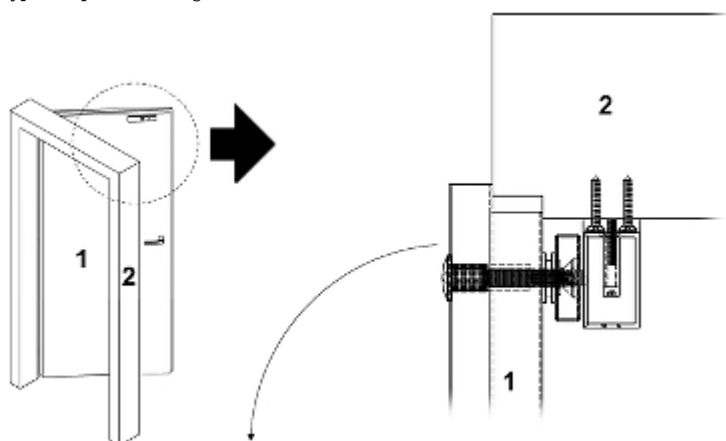


Dimensions:





Typical operation diagram:



- 1. Door
- 2. Door-frame

Should pay attention to rubber pads mounted between the door and the movable element of the lock. These pads ensure proper fit the lock elements with the door when it is closed.

In the kit:



PACKAGE

Dimensions (L x W x H): 0x0x0 mm	Gross Weight: 0 kg
----------------------------------	--------------------