

Code: ZE-280

ELECTROMAGNETIC LOCK ZE-280

Net: 39.91 EUR Gross: 39.91 EUR

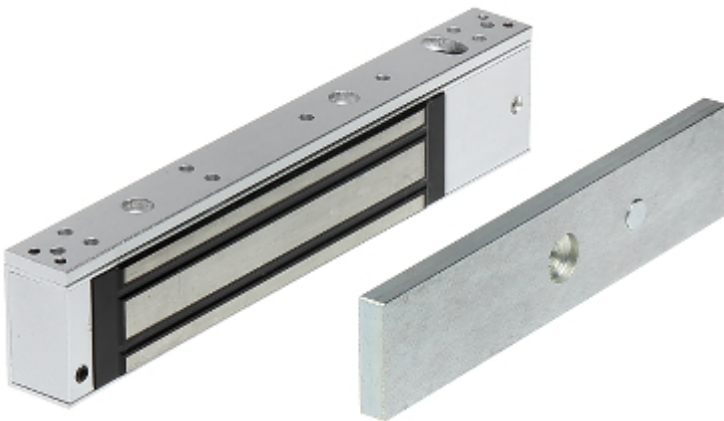
Electromagnetic lock, surface, single. With a simple design and modern manufacturing technology, is a reliable device to lock doors and gates. It operates reversibly - it is open when power is off. Force an entry closed by lock requires the use of force of > 280 kg. The lock is composed of two elements: electromagnet (usually mounted in the frame) and lock plate (usually mounted in the door). Error free operation of the lock is a result of lack the mechanical elements, which after some time become damaged.



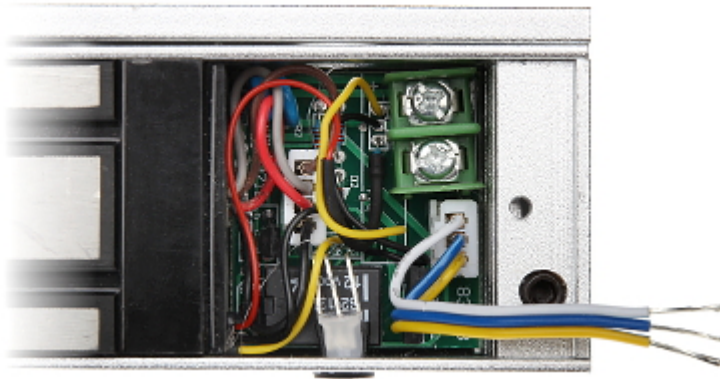
SPECIFICATION

Load capacity:	280 kg
Rated voltage:	12 / 24 V DC
Current consumption:	500 / 250 mA
Main features:	<ul style="list-style-type: none">• LED indication,• The NC output indicating opening the door
Weight:	1.69 kg (total)
Dimensions:	238.5 x 47 x 36.7 mm (total)
Guarantee:	2 years

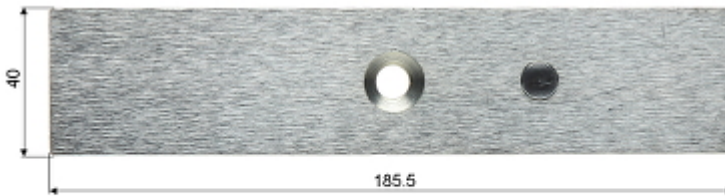
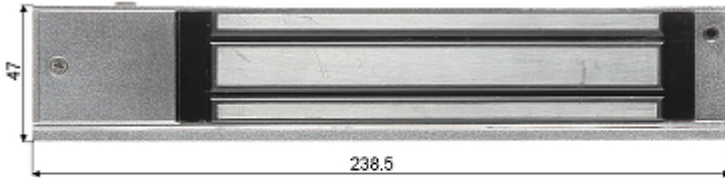
PRESENTATION



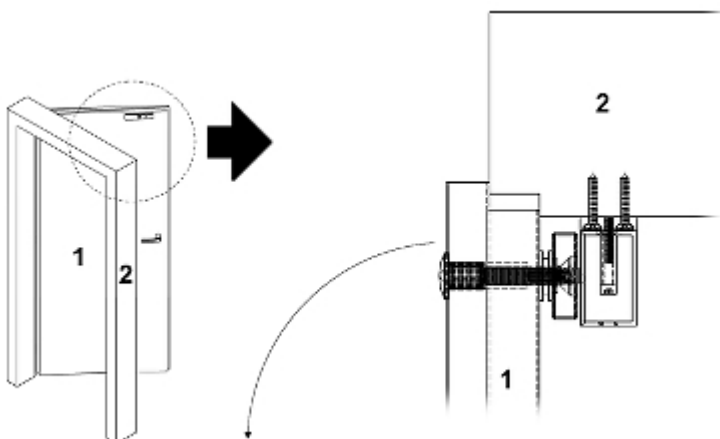
Connectors:



Dimensions:



Typical operation diagram:



- 1. Door
- 2. Door-frame

Should pay attention to rubber pads mounted between the door and the movable element of the lock. These pads ensure proper fit the lock elements with the door when it is closed.

In the kit:



PACKAGE

Dimensions (L x W x H): 0x0x0 mm	Gross Weight: 0 kg
----------------------------------	--------------------

