

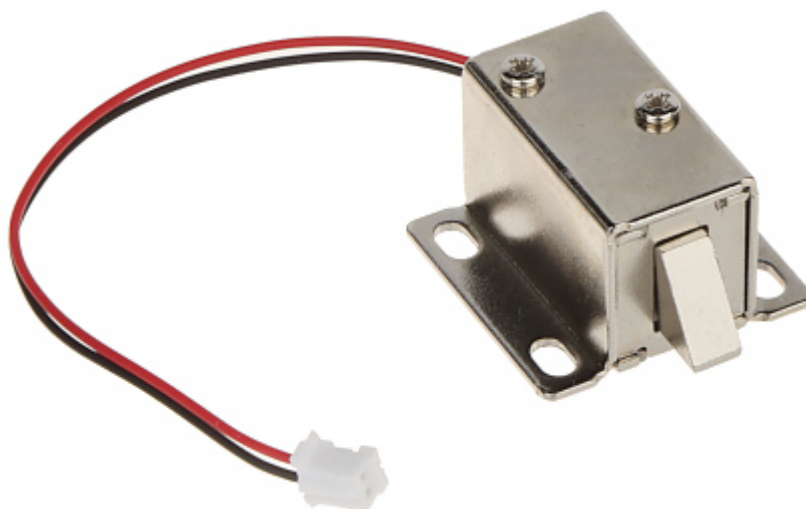
Code: ATLO-DT-L02

ELECTROMAGNETIC CABINET LOCK ATLO-DT-L02

Net: 17.60 PLN Gross: 17.60 PLN

The ATLO-DT-L02 cabinet lock allows for convenient and safe management of access to cabinets or deposit boxes in places such as: airports, shopping centers, swimming pools, gyms, sports halls, etc.

Due to its construction, the lock remains closed in the event of a power failure.

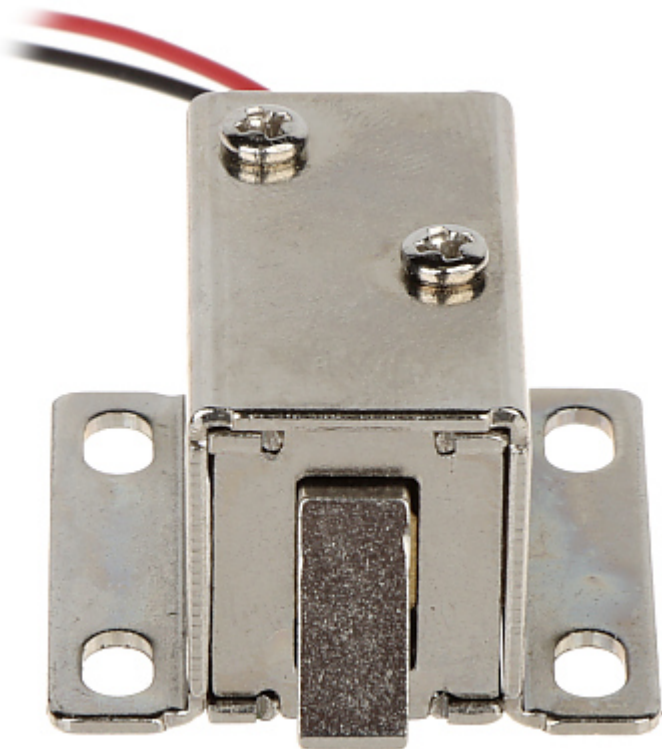
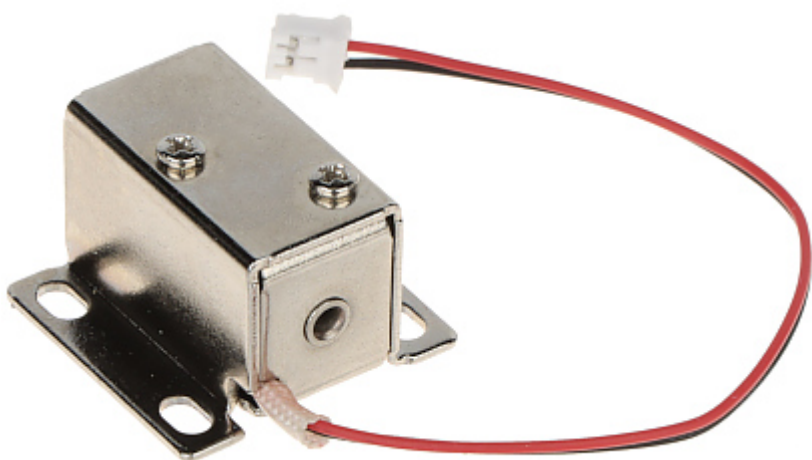
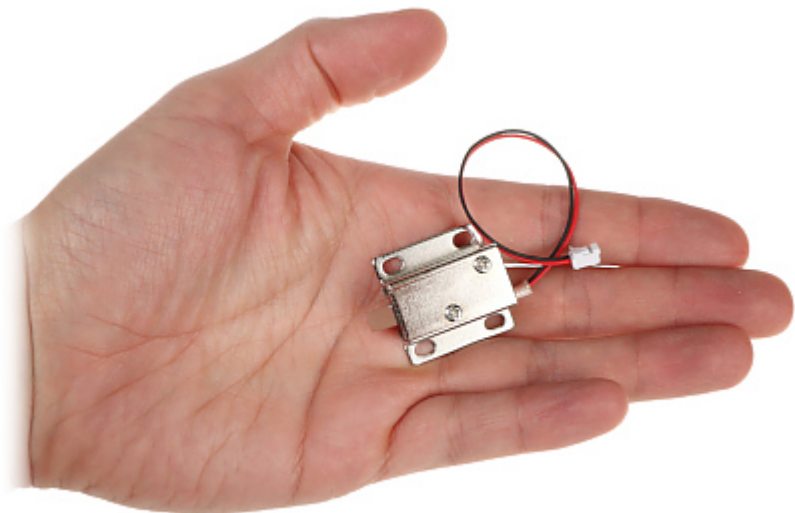


SPECIFICATION

Rated voltage:	12 V DC
Current consumption:	0.4 A
Application:	right-side door / left-side door
Ratched lock:	—
Memory function:	—
Reverse action:	—
Clearance adjustment:	—
Main features:	<ul style="list-style-type: none">• The lock remains closed when it is not powered - bolt extended• Bolt slide out distance : 5 mm
Weight:	0.034 kg
Dimensions:	33 x 27 x 17 mm
Manufacturer / Brand:	ATLO
Guarantee:	2 years

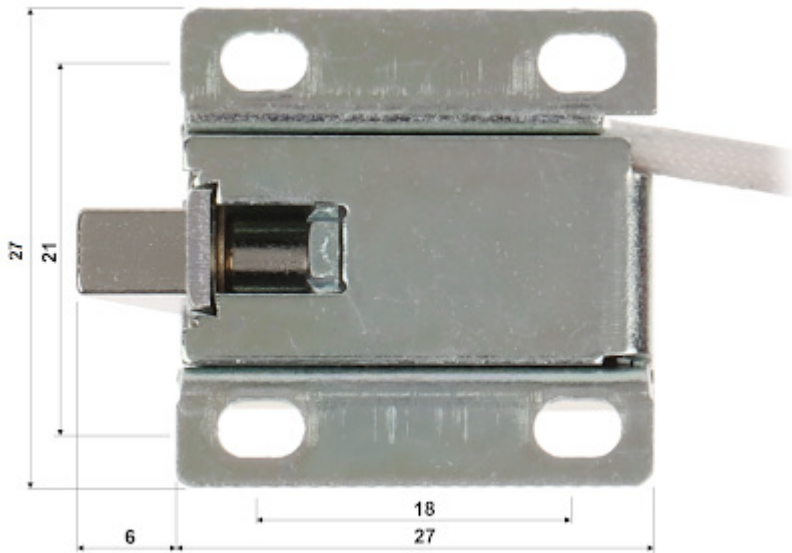
PRESENTATION

The product has a very small dimensions:



Dimensions:

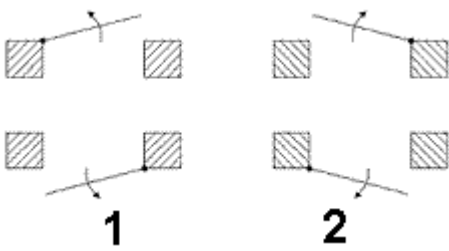
DELTA-OPTI Monika Matysiak; <https://www.delta.poznan.pl>
POL; 60-713 Poznań; Graniczna 10
e-mail: delta-opti@delta.poznan.pl; tel: +(48) 61 864 69 60



Connector:



Determination of the left- and right side doors:



OUR OPINIONS



- The product has a very small dimensions.

PACKAGE

Dimensions (L x W x H): 0x0x0 mm	Gross Weight: 0 kg
----------------------------------	--------------------