

Code: MKR-5.5/CT

TRUSS - PIPE MAST **MKR-5.5/CT**

Net: **2 536.83 PLN** Gross: **2 536.83 PLN**

The MKR-5.5/CT mast is a solid, lightweight aluminum construction with the possibility of entering it by a qualified installer.

No need for guy-wires makes the mast requires little space and has a beneficial effect on aesthetics.

The mast is designed for mounting light devices such as CCTV cameras, Wi-Fi, LTE antennas or small radio links in the first wind zone (according to EUROCODE standards for Poland). The technical calculations available in the downloads are only a reference for designers. The accompanying documentation should not be considered as installation guidelines.

In the case of less typical installation locations and loads, we encourage you to contact us to verify your needs in technical terms.



SPECIFICATION

Height of the mast:	5.5 m
Number of sections:	<ul style="list-style-type: none">• 2 pcs - Truss Mast,• 2 pcs - Pipe Mast
Wall thickness:	1.5 mm
Material:	Aluminum
Construction:	Truss of triangular cross-section : 250 x 250 x 250 mm
Supporting pillars:	Aluminum tube Ø 35 mm
Main features:	<ul style="list-style-type: none">• The lack of guy-wires• The MK-1.5/POD base application enables laying a mast• Possibility of entering the assembled mast by the person weighing up to 100 kgs with winds up to 5 m/s• The possibility of transport in the trunk of a passenger car• The dimensions of the product after packing enable to send it by courier across Europe
Weight:	<ul style="list-style-type: none">• 2 x 5.05 kg - Truss Mast• 2 x 0.72 kg - Pipe Mast• 1.56 kg - Pipe Clamp OR3-50W6• 3.01 kg - Mast base• 1.6 kg - Anchor for concrete
Guarantee:	2 years

PRESENTATION

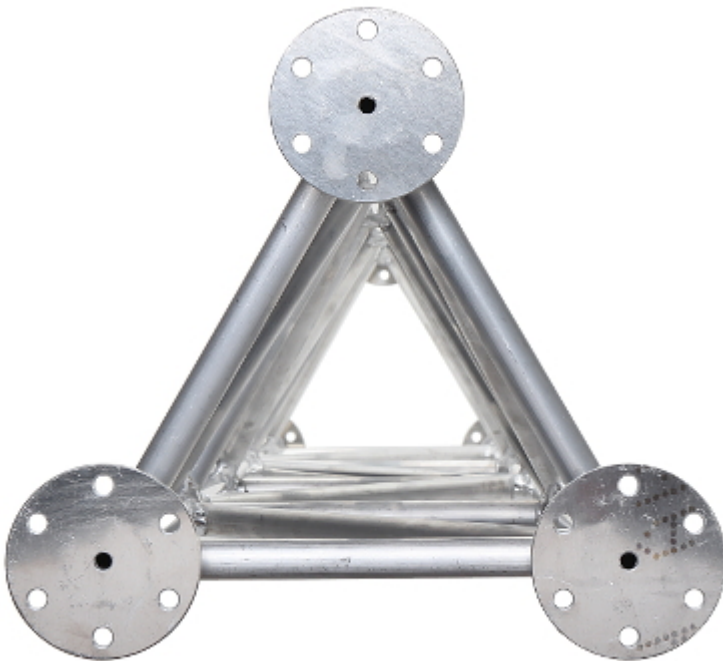
Single section of truss mast:



DELTA-OPTI Monika Matysiak; <https://www.delta.poznan.pl>
POL; 60-713 Poznań; Graniczna 10
e-mail: delta-opti@delta.poznan.pl; tel: +(48) 61 864 69 60



Bottom view:



Two sections combined:





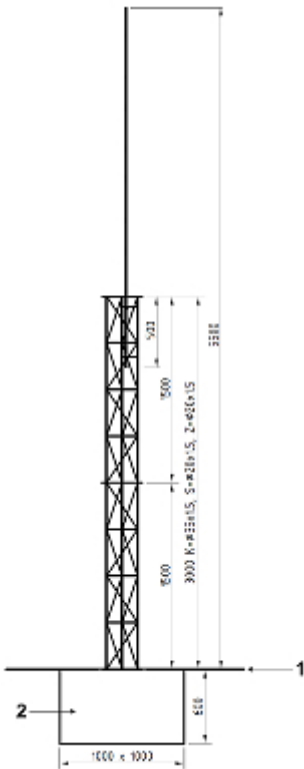
Pipe masts are combined on a wedge:



The combination of a truss mast with a pipe mast:



Schematic diagram:



- 1. Ground level
- 2. Concrete foundation

The MK-1.5/POD base application enables laying a mast:





Prepared form-work for the foundation of the mast:



Poured foundation of the mast with embedded anchor and established base:



Ready foundation with the set mast:



In the kit:



PACKAGE

Dimensions (L x W x H): 0x0x0 mm	Gross Weight: 0 kg
----------------------------------	--------------------

