

Code: GTX-B1-19-162G

SWITCH POE **GTX-B1-19-162G** 16-PORT SFP

Net: **150.98 EUR** Gross: **150.98 EUR**

Due to the reliability and ensuring high quality of transmission, the GTX-B1-19-162G 16-port PoE switch is an ideal solution for applications in CCTV IP installations. PoE powering possibility, compatible with the 802.3af/at standard makes the device more universal and easier to install.

Attention! When the Extend function is enabled the PoE range increases up to 250m and the transmission speed reduces to 10 Mb/s.



SPECIFICATION

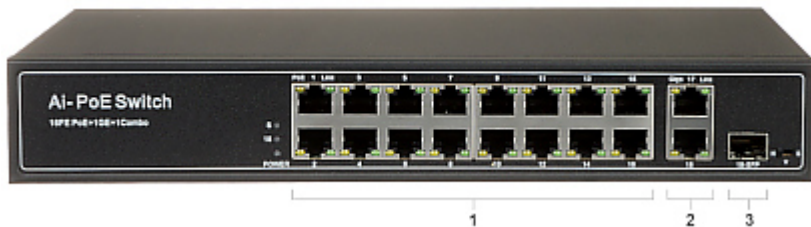
LAN ports:	<ul style="list-style-type: none">• 16 x RJ45 (16 x PoE (802.3af/at)),• 2 x RJ45 - Uplink,• 1 x Port SFP - Uplink
Management:	—
LED diodes:	Power, V - VLAN (Port Isolation), S - Extend, PoE, Link/Act, Speed
Transmission speed:	<ul style="list-style-type: none">• 10 / 100 / 1000 Mbps : 2 x Port LAN - Uplink,• 1000 Mbps : 1 x Port SFP - Uplink,• 10 / 100 Mbps : 16 x Port LAN & PoE
Operation modes:	<ul style="list-style-type: none">• N - Normal - the device operates as normal PoE switch• V - VLAN (Port Isolation) - 1 ... 16 ports are isolated from each other and separately work with the Uplink ports• S - Extend - Range : 250 m @ 10 Mbps
Maximal output power:	30 W / port PoE - 1 ... 16 ports
Maximal total power:	150 W
MAC addresses table:	2k
Main features:	<ul style="list-style-type: none">• MDI/MDI-X auto detection feature - auto detecting the data transmission mode• Full Duplex: IEEE802.3x, Half Duplex: Back Pressure• Auto-learning and Auto-aging functions support for MAC addresses• PD Alive mode - monitoring of the ports that power PoE devices and automatic restart by cutting off the power supply when an unresponsive device is detected• MTBF (Mean Time Between Faults) : 50000 h
Certificates:	CE, FCC Class B
Protections:	Overvoltage \pm 4 kV
Power supply:	100 ... 265 V AC
Operation temp:	-10 °C ... 45 °C
Weight:	1.54 kg
Dimensions:	295 x 195 x 45 mm
Guarantee:	2 years

PRESENTATION

Front view:



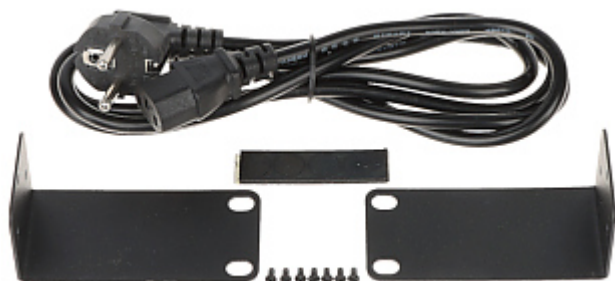
DELTA-OPTI Monika Matysiak; <https://www.delta.poznan.pl>
POL; 60-713 Poznań; Graniczna 10
e-mail: delta-opti@delta.poznan.pl; tel: +(48) 61 864 69 60



- 1 - LAN
 - 2 - LAN + PoE
 - 3 - SFP
- Rear view:



In the kit:



PACKAGE

Dimensions (L x W x H): 0x0x0 mm	Gross Weight: 0 kg
----------------------------------	--------------------

