

Code: IPUPS-16-20-R5U0

POE SWITCH WITH BUFFERED POWER SUPPLY **IPUPS-16-20-R5U0** 16-PORT ATTE

Net: **2 319.00 PLN** Gross: **2 319.00 PLN**

16-port PoE switch in a RACK cabinet enclosure with a buffered power supply. 16 ports support Power over Ethernet (PoE) function.

The IPUPS-16-20-R5U0 set consists of 2 XPOE-10-20A-OF switch modules, 2 AUPS-70-120-OF buffered power supply modules and 2 ASUC-100-480-OF voltage converter modules enclosed in the ABOX-R5U0 RACK cabinet enclosure with space for 2 18Ah batteries. The buffered PSUs are adapted to work with maintenance-free batteries (gel or AGM) with nominal voltage 12V.



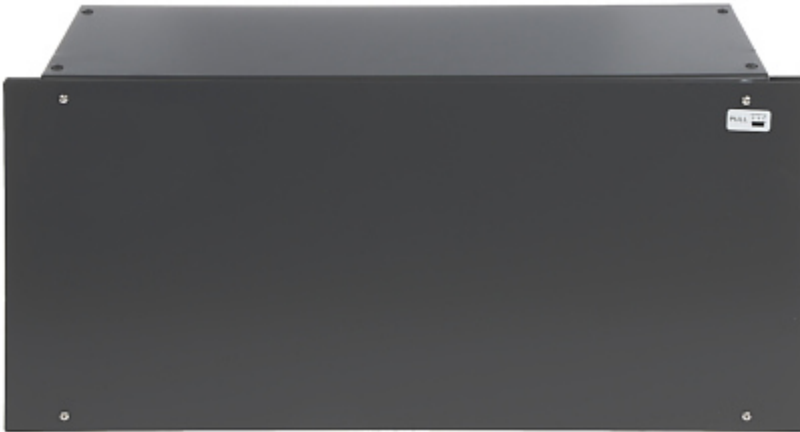
SPECIFICATION

LAN ports:	<ul style="list-style-type: none">• 2 x RJ45 10/100/1000 Base-T - Uplink,• 16 x RJ45 10/100 Base-T + PoE (802.3af/at) / Passive PoE
Management:	—
LED diodes:	AC, DC, CHARGING (battery charging), PoE, Gigabit Ethernet
Transmission speed:	<ul style="list-style-type: none">• 10 / 100 / 1000 Mbps : 2 x Port Uplink,• 10 / 100 Mbps : 16 x Port LAN & PoE
Maximal output power:	<ul style="list-style-type: none">• 40 W @ Passive PoE - LAN1 ... LAN8 ports,• 30 W @ PoE (802.3af/at) - LAN1 ... LAN8 ports
Maximal total power:	130 W
Operation modes:	Standard : 100 m @ 10/100 Mb/s - LAN1 ... LAN8 ports
Main features:	<ul style="list-style-type: none">• 4K UHD support• The ability to independently turn on and off the PoE power for each of the LAN 1 ... LAN 16 ports• The modular design streamlines service tasks and enables quick and easy system expansion• The raster system of module assembly facilitates the expansion of the device by further modules• 2 x Place for battery : 12 V / 18 Ah• Battery charging current : 1 A / 2 A - (set with the JP1 jumper)• Battery - Protection against reverse polarity connection, Protection against deep discharge of the battery• Technical outputs of the OC type signaling loss of voltage at the PSU output (OUF) and loss of voltage in the 230V mains (ACF)• PSU thermal protection : 130 °C• Overload protection• LAN & PoE ports - Short-circuit protection, Overvoltage• Can be mounted in a Rack 19" cabinet• "Index of Protection" : IP20

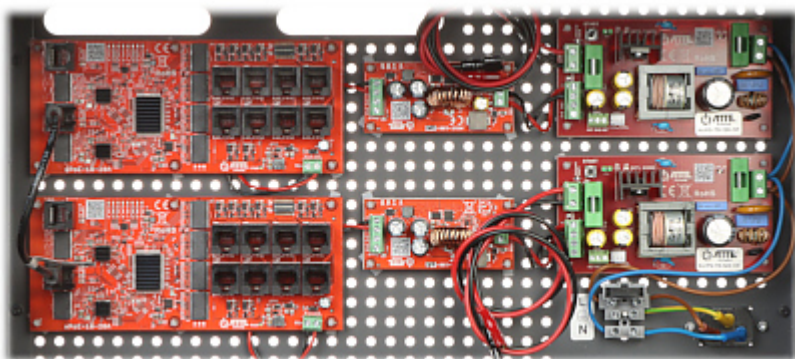
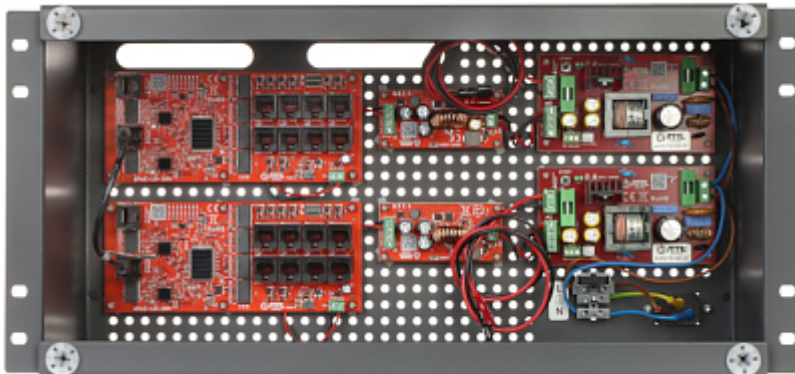
DELTA-OPTI Monika Matysiak; <https://www.delta.poznan.pl>
POL; 60-713 Poznań; Graniczna 10
e-mail: delta-opti@delta.poznan.pl; tel: +(48) 61 864 69 60

Power supply:	190 ... 260 V AC
Weight:	3.42 kg
Dimensions:	440 x 220 x 180 mm - RACK 19", 5U
Housing external dimensions:	484 x 225 x 202 mm
Manufacturer / Brand:	ATTE
Guarantee:	3 years

PRESENTATION



Internal view of the housing:

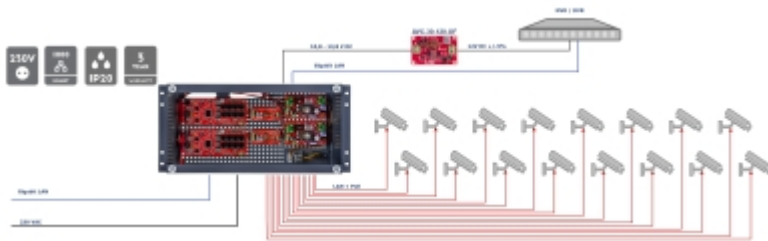


Mounting side view:





Example of application:



In the kit:



PACKAGE

Dimensions (L x W x H): 0x0x0 mm	Gross Weight: 0 kg
----------------------------------	--------------------