

Code: DHI-HCVR7208A-S3

# HD-CVI, PAL, TCP/IP DVR **DHI-HCVR7208A-S3** 8 CHANNELS DAHUA

Net: 1 310.00 PLN Gross: 1 310.00 PLN

Tribrid DVR working in standards: HD-CVI - High Definition Composite Video Interface, PAL, TCP/IP.

The HD-CVI interface allows to transmission of analog, composite video signal via coaxial cable. It enables the transmission of HD resolution images for even 500 m distance with keeping the low costs of the installation. During transmission there are no delays and is maintained the original, high quality image.



## SPECIFICATION

Standard:	HD-CVI, PAL, TCP/IP
Maximal total frame rate:	<ul style="list-style-type: none"><li>• HD-CVI, PAL : 200 fps @ 1920 x 1080 px, 200 fps @ 1280 x 720 px, 200 fps @ 960 x 576 px, 200 fps @ 704 x 576 px</li><li>• IP : 300 fps @ max. 2592 x 1944 px</li></ul>
Recording speed adjustment:	<ul style="list-style-type: none"><li>• HD-CVI, PAL 1 ... 25 fps @ 1920 x 1080 1 ... 25 fps @ 1280 x 720 1 ... 25 fps @ 960 x 576 1 ... 25 fps @ 704 x 576 for each channel</li><li>• IP 1 ... 25 fps @ max. 2592 x 1944 for each channel</li></ul>
Operation modes:	<ul style="list-style-type: none"><li>• 8 x HD-CVI / PAL</li><li>• 7 x HD-CVI / PAL + 1 x IP max. 5 Mpx</li><li>• 6 x HD-CVI / PAL + 2 x IP max. 5 Mpx</li><li>• 5 x HD-CVI / PAL + 3 x IP max. 5 Mpx</li><li>• 4 x HD-CVI / PAL + 4 x IP max. 5 Mpx</li><li>• 3 x HD-CVI / PAL + 5 x IP max. 5 Mpx</li><li>• 2 x HD-CVI / PAL + 6 x IP max. 5 Mpx</li><li>• 1 x HD-CVI / PAL + 7 x IP max. 5 Mpx</li><li>• 8 x HD-CVI / IP / PAL + 4 x IP max. 5 Mpx</li></ul>
Video inputs:	8 pcs BNC, HD-CVI / PAL
Video outputs:	1 pcs HDMI 1 pcs VGA
Audio inputs:	4 pcs CINCH
Audio outputs:	1 pcs CINCH
Image compression method:	H.264
Number of compression levels:	4
Image records resolutions:	2592 x 1944 @ IP 2048 x 1536 @ IP 1920 x 1080 1280 x 720 960 x 576 704 x 576 352 x 288

DELTA-OPTI Monika Matysiak; <https://www.delta.poznan.pl>  
POL; 60-713 Poznań; Graniczna 10  
e-mail: [delta-opti@delta.poznan.pl](mailto:delta-opti@delta.poznan.pl); tel: +(48) 61 864 69 60

Recording modes:	Manual, Motion Detection, Schedule
Supported hard drives:	2 x 6 TB SATA
External storage devices backup:	Save single frames and whole records from DVR drive to the USB drive
Searching and playback the records:	Records searching: by time + timeline with record type. Playback: forward, fast, slow, step Advanced searching (to the one second accuracy)
Network functions:	Network Client Software and IE browser: live view, playback and backup of the records, partial configuration of the recorder parameters
Mobile phones support:	Port no.: 37777 or access by a cloud (P2P) • Android: Free application <a href="#">DMSS</a> • iOS (iPhone): Free application <a href="#">DMSS</a>
Alarm inputs / outputs:	8 / 3
PTZ control:	IP Speed Dome Cameras, Control compatible with coax PTZ HD-CVI RS-485 - PELCO-D/P
IVS analysis:	crossing the line (tripwire), crossing the line (tripwire), intrusion, face detection
Motion Detection:	Split the screen into zones 22 x 18 motion zones Very good sensitivity after motion detection records detected channels only
Mouse support:	✓
IR remote controller in the set:	—
Power supply:	12 V DC / 4 A (power adapter included)
Weight:	1.676 kg
Dimensions:	375 x 288 x 53 mm
Supported languages:	English, Bulgarian, Czech, Finnish, Greek, Polish, Romanian, Serbian, Slovenian, Hungarian
Country of origin:	China
Manufacturer / Brand:	DAHUA
Guarantee:	<b>3 years</b>

## PRESENTATION

Front panel:



Rear view:

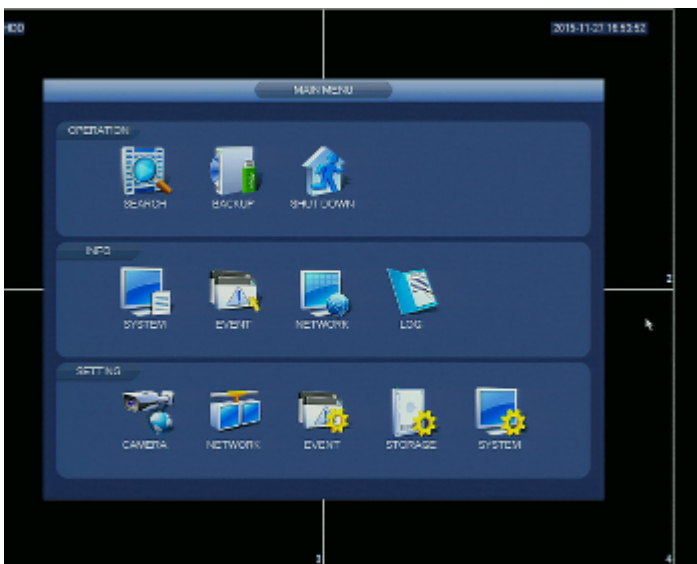
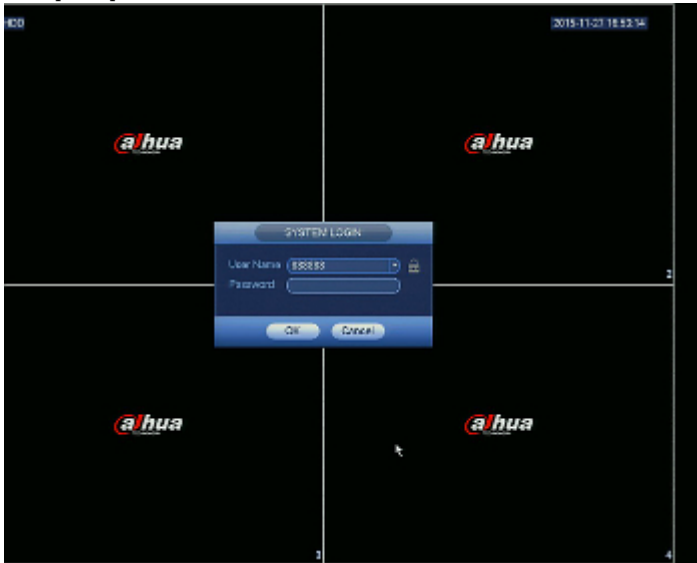


In the kit:

DELTA-OPTI Monika Matysiak; <https://www.delta.poznan.pl>  
POL; 60-713 Poznań; Graniczna 10  
e-mail: [delta-opti@delta.poznan.pl](mailto:delta-opti@delta.poznan.pl); tel: +(48) 61 864 69 60



Example captures of device interface:



## PACKAGE

Dimensions (L x W x H): 0x0x0 mm	Gross Weight: 0 kg
----------------------------------	--------------------