

Code: HAC-HDW1200TQ-0280B-S5

AHD, HD-CVI, HD-TVI, PAL CAMERA **HAC-HDW1200TQ-0280B-S5** - 1080p 2.8 mm DAHUA

Net: **47.66 EUR** Gross: **47.66 EUR**

Megapixel camera with 1/2.7" CMOS sensor and AHD / HD-CVI / HD-TVI / CVBS.

The range of IR illumination according to the manufacturer data, depends on outer conditions (visibility - air transparency, environment, wall colors ie. scene reflectance).

The AHD / HD-CVI / HD-TVI interface allows to transmission of analog video signal via coaxial cable in max. 8 Mpx (4K UHD) resolution. During transmission there are no delays and is maintained the original, high quality image.

In the case of video transmission using a twisted pair cable and matching transformers (balun), be aware of the possibility of signal reflections and interfering signals.

Camera is according to IP67 Index of Protection norm.



SPECIFICATION

Standard:	HD-CVI, HD-TVI, AHD, CVBS
Sensor:	1/2.7 " Progressive Scan CMOS
Matrix size:	2.1 Mpx
Resolution:	1920 x 1080 - 1080p , 1280 x 720 - 720p , 960 x 576 - 960H, PAL
Range of IR illumination:	40 m
IR illuminator power adjustment:	Automatic
Lens:	2.8 mm
View angle:	• 101 ° (manufacturer data) • 98 ° (our tests result)
S/N ratio:	> 65 dB
Video output:	AHD / HD-CVI / HD-TVI / CVBS, 1 Vpp / 75 Ω
Audio:	—
Main features:	<ul style="list-style-type: none">• D-WDR - Wide Dynamic Range• 2D-DNR - Digital Noise Reduction• BLC/HLC - Back Light / High Light Compensation• ICR - Movable InfraRed filter• Day/night mode• AGC - Automatic Gain Control• Auto White Balance• F-DNR (Defog) - Reduction of image noise caused by precipitation• Privacy zones• Mirror - Mirror image• Sharpness - sharper image outlines

DELTA-OPTI Monika Matysiak; <https://www.delta.poznan.pl>
POL; 60-713 Poznań; Graniczna 10
e-mail: delta-opti@delta.poznan.pl; tel: +(48) 61 864 69 60

OSD menu:	OSD menu available via DAHUA recorder
Power supply:	12 V DC / 240 mA
Power consumption:	≤ 2.9 W
Housing:	Dome, Metal + Plastic
"Index of Protection":	IP67
Color:	White
Vandal-proof:	—
Operation temp:	-40 °C ... 60 °C
Weight:	0.33 kg
Dimensions:	Ø 110 x 101 mm
Manufacturer / Brand:	DAHUA
Guarantee:	3 years

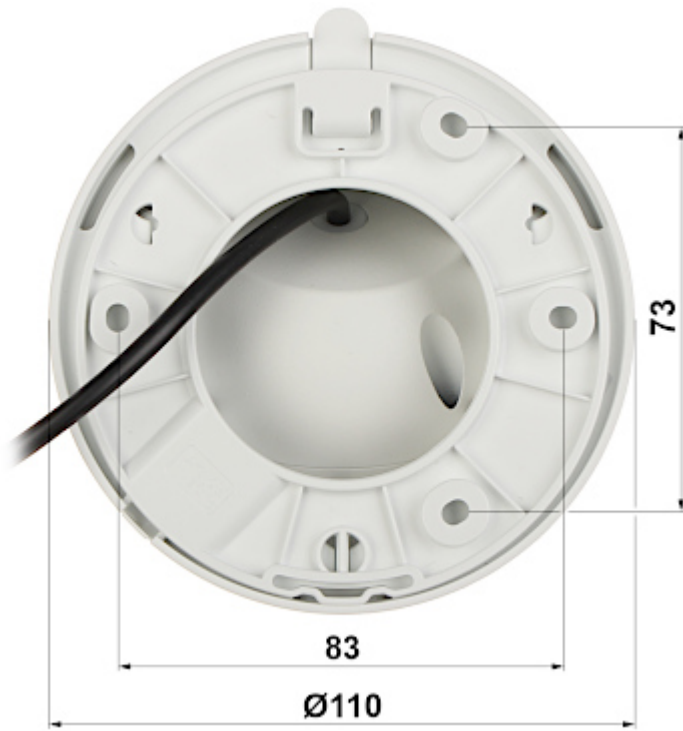
PRESENTATION

Camera is out from clamping ring:

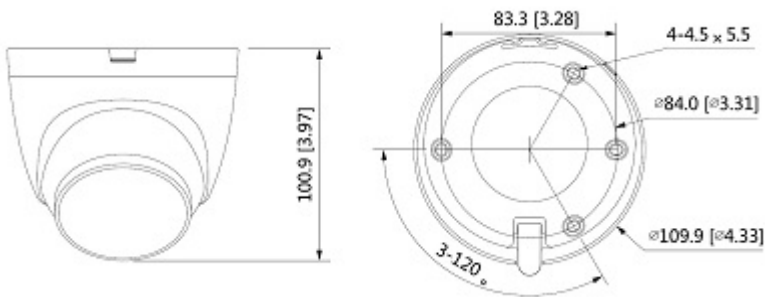


Mounting side view:





Dimensions:



In the kit:



OUR TESTS

AHD:

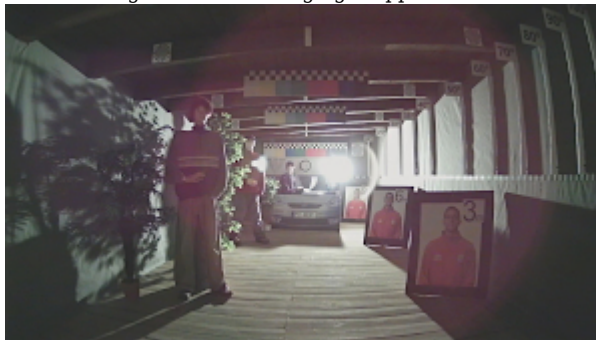
Camera image at artificial illumination (about 30Lux):



Camera image at night conditions with internal built-in IR illuminator on:



Camera image at direct strong light opposite to camera:



HD-CVI:

Camera image at artificial illumination (about 30Lux):



Camera image at night conditions with internal built-in IR illuminator on:



Camera image at direct strong light opposite to camera:



HD-TVI:

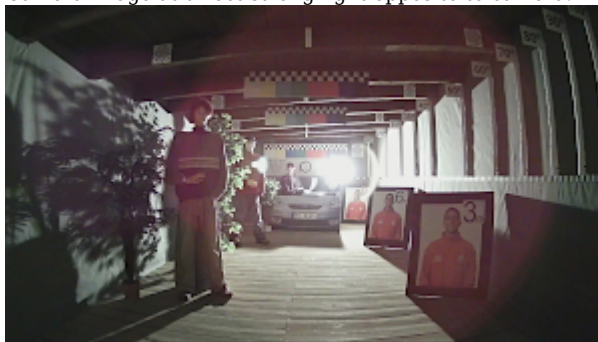
Camera image at artificial illumination (about 30Lux):



Camera image at night conditions with internal built-in IR illuminator on:



Camera image at direct strong light opposite to camera:



PACKAGE

Dimensions (L x W x H): 0x0x0 mm	Gross Weight: 0 kg
----------------------------------	--------------------