

Code: DH-HAC-HDW1200TP-Z-2

# AHD, HD-CVI, HD-TVI, PAL CAMERA **DH-HAC-HDW1200TP-Z-2** - 1080p 2.7 ... 12 mm - MOTOZOOM DAHUA

Net: **81.44 EUR** Gross: **81.44 EUR**



Megapixel camera with 1/2.7" CMOS sensor and AHD / HD-CVI / HD-TVI / PAL.

The AHD / HD-CVI / HD-TVI interface allows to transmission of analog video signal via coaxial cable in 1080p resolution. It enables the transmission of HD resolution images for even 500 m distance with keeping the low costs of the installation. During transmission there are no delays and is maintained the original, high quality image.

In the case of video transmission using a twisted pair cable and matching transformers (balun), be aware of the possibility of signal reflections and interfering signals.

Setting the camera in PAL mode allows to obtain an image in 960H resolution.

Attention! The camera default setting is HD-CVI standard. To change the camera standard you need use the PFM820 controller, available separately.

## SPECIFICATION

Standard:	AHD, HD-CVI, HD-TVI, CVBS
Sensor:	1/2.7 " Progressive Scan CMOS
Matrix size:	2.1 Mpx
Resolution:	<ul style="list-style-type: none"><li>• AHD / HD-CVI / HD-TVI : 1920 x 1080 - 1080p , 1280 x 720 - 720p</li><li>• CVBS : 960 x 576 - 960H</li></ul>
IR illuminator support:	ICR - Movable InfraRed filter
Video output:	1 Vpp 75 Ω, AHD / HD-CVI / HD-TVI / CVBS - To change the standard, in which the camera is operating, the PFM820 controller is required
OSD menu:	OSD menu available via DAHUA recorder
Lens:	2.7 ... 12 mm - Motozoom, The camera does not have auto-focus function
View angle:	<ul style="list-style-type: none"><li>• 106 ° ... 33 ° (manufacturer data)</li><li>• 103 ° ... 33 ° (our tests result)</li></ul>
S/N ratio:	> 65 dB
Range of IR illumination:	60 m
IR illuminator power adjustment:	Automatic
Main features:	<ul style="list-style-type: none"><li>• ICR - Movable InfraRed filter</li><li>• 2D-DNR - Digital Noise Reduction</li><li>• BLC/HLC - Back Light / High Light Compensation</li><li>• D-WDR - Wide Dynamic Range</li><li>• AGC - Automatic Gain Control</li><li>• Auto White Balance</li></ul>

DELTA-OPTI Monika Matysiak; <https://www.delta.poznan.pl>  
POL; 60-713 Poznań; Graniczna 10  
e-mail: [delta-opti@delta.poznan.pl](mailto:delta-opti@delta.poznan.pl); tel: +(48) 61 864 69 60

Power supply:	12 V DC / 270 mA
Housing:	Dome, Metal
Vandal-proof:	—
Color:	White
"Index of Protection":	IP67
Operation temp:	-30 °C ... 60 °C
Weight:	0.58 kg
Dimensions:	Ø 122 x 104 mm
Manufacturer / Brand:	DAHUA
Guarantee:	<b>3 years</b>

## PRESENTATION

Camera is out from clamping ring:



Mounting side view:



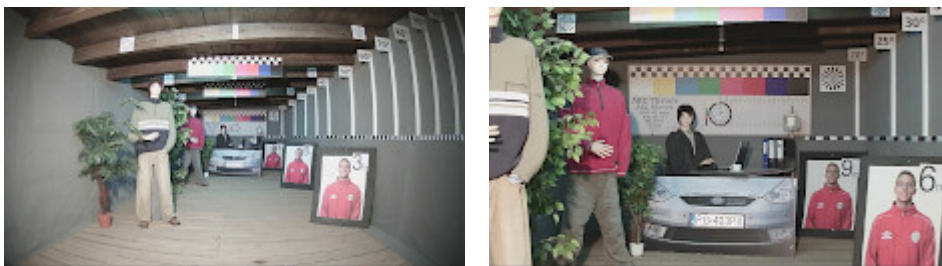
In the kit:



## OUR TESTS

AHD:

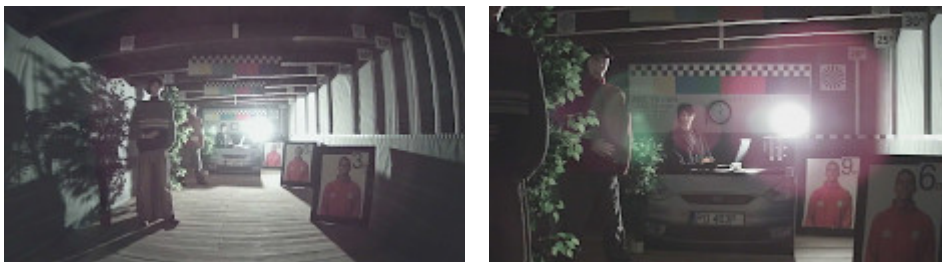
Camera image at artificial illumination (about 30Lux):



Camera image at night conditions with internal built-in IR illuminator on:

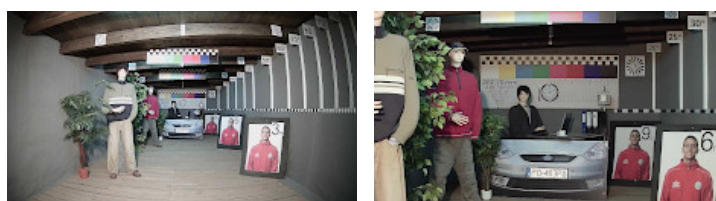


Camera image at direct strong light opposite to camera:



HD-CVI:

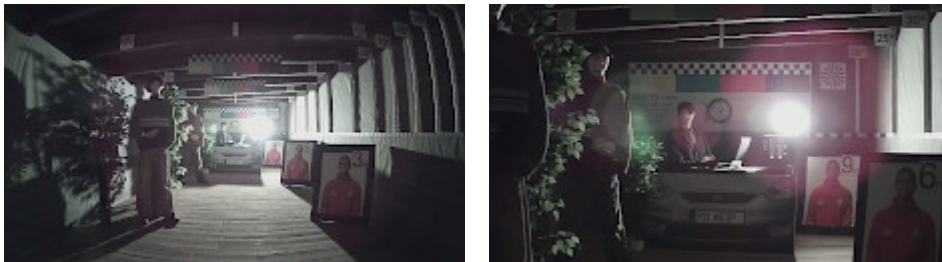
Camera image at artificial illumination (about 30Lux):



Camera image at night conditions with internal built-in IR illuminator on:

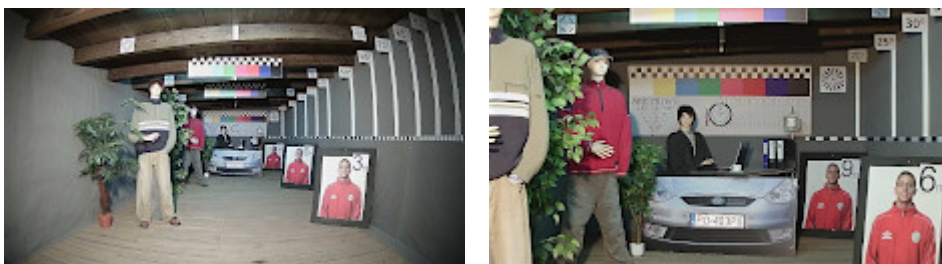


Camera image at direct strong light opposite to camera:



HD-TVI:

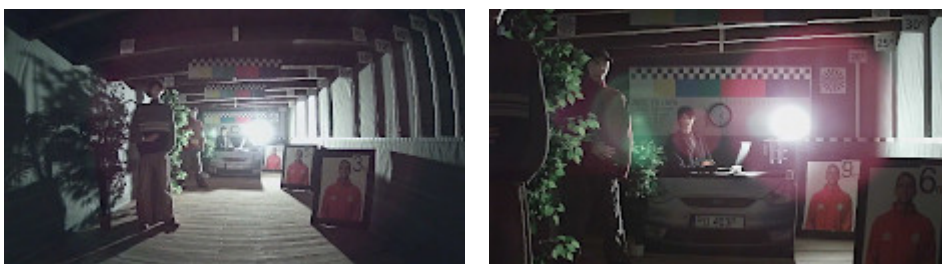
Camera image at artificial illumination (about 30Lux):



Camera image at night conditions with internal built-in IR illuminator on:



Camera image at direct strong light opposite to camera:



## PACKAGE

DELTA-OPTI Monika Matysiak; <https://www.delta.poznan.pl>  
POL; 60-713 Poznań; Graniczna 10  
e-mail: delta-opti@delta.poznan.pl; tel: +(48) 61 864 69 60

Dimensions (L x W x H): 0x0x0 mm	Gross Weight: 0 kg
----------------------------------	--------------------

