

Code: HAC-ME1200A-0280P

**AHD, HD-CVI, HD-TVI, PAL CAMERA HAC-ME1200A-0280P PIR DETECTOR**  
**- 1080p 2.8 mm DAHUA**  
Net: **66.11 EUR** Gross: **66.11 EUR**

Megapixel camera with 1/2.8" CMOS sensor and AHD / HD-CVI / HD-TVI / PAL.

The AHD / HD-CVI / HD-TVI interface allows to transmission of analog video signal via coaxial cable in max. 8 Mpx (4K UHD) resolution. During transmission there are no delays and is maintained the original, high quality image. Setting the camera in PAL mode allows to obtain an image in 960H resolution.

Thanks to the "Starlight" technology used, the camera only needs very low lighting to obtain a clear color image.

Attention! The camera default setting is HD-CVI standard. To change the camera standard you need use the PFM820 controller, available separately.



## SPECIFICATION

Standard:	AHD, HD-CVI, HD-TVI, CVBS
Sensor:	1/2.7 " CMOS
Matrix size:	2.1 Mpx
Resolution:	1920 x 1080 - 1080p, AHD-H, HD-CVI, HD-TVI , 960 x 576 - 960H PAL
Lens:	2.8 mm
View angle:	<ul style="list-style-type: none"><li>• 107 ° (manufacturer data)</li><li>• 102 ° (our tests result)</li></ul>
S/N ratio:	> 65 dB
Range of IR illumination:	—
Video output:	1 Vpp 75 Ω, AHD, HD-CVI, HD-TVI, CVBS
Alarm inputs / outputs:	The ability to send an alarm signal from the camera to the DAHUA recorder via a coaxial cable (coaxial) - HD-CVI only
Audio:	—
PIR DETECTOR:	✓
Sensor type:	Passive Infra Red (PIR)
Detection angle / Detection range:	110 ° / 10 m
Recommended installation height:	2.2 ... 3 m

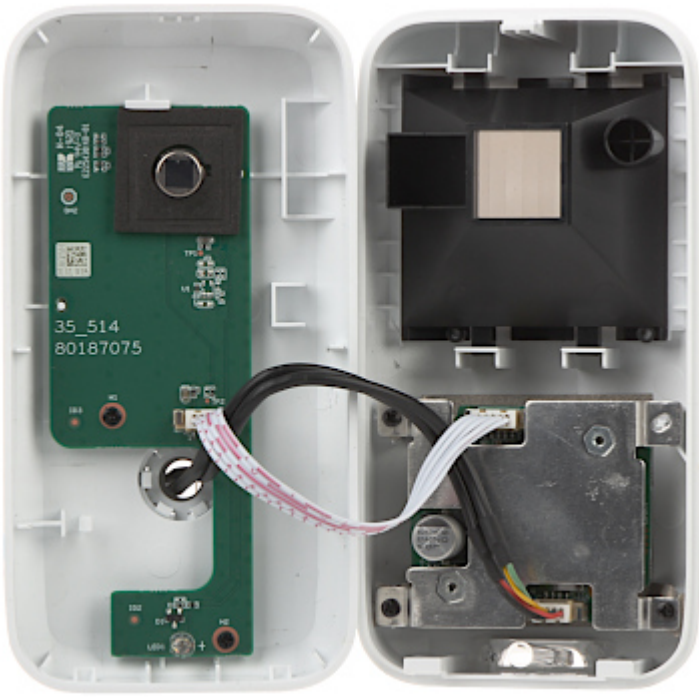
Pet immunity:	—
Sensitivity adjustment:	—
Main features:	<ul style="list-style-type: none"> <li>• D-WDR - Wide Dynamic Range</li> <li>• 2D-DNR - Digital Noise Reduction</li> <li>• BLC/HLC - Back Light / High Light Compensation</li> <li>• Mirror - Mirror image</li> <li>• Motion Detection - Built-in PIR detector</li> <li>• Sharpness - sharper image outlines</li> <li>• Auto White Balance</li> </ul>
OSD menu:	OSD menu available via DAHUA recorder
Application:	For indoor use
Power supply:	12 V DC / 70 mA
Power consumption:	≤ 0.8 W
Housing:	Compact - Plastic
Color:	White
Operation temp:	-10 °C ... 50 °C
Weight:	0.13 kg
Dimensions:	119 x 62 x 59 mm
Supported languages:	English
Manufacturer / Brand:	DAHUA
Guarantee:	<b>3 years</b>

## PRESENTATION

Front view:



Internal view of the housing:



Side view:



Mounting side view:



In the kit:



## OUR TESTS

AHD:

Camera image at artificial illumination (about 30Lux):



Camera image at night conditions with external IR illuminator on:



Camera image at direct strong light opposite to camera:



Camera image at night conditions, at different illumination values show below:

10 LUX:



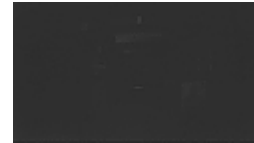
1 LUX:



0.1 LUX:



0.01 LUX:



HD-CVI:

Camera image at artificial illumination (about 30Lux):



Camera image at night conditions with external IR illuminator on:



Camera image at direct strong light opposite to camera:



Camera image at night conditions, at different illumination values show below:

10 LUX:



1 LUX:



0.1 LUX:



0.01 LUX:



HD-TVI:

Camera image at artificial illumination (about 30Lux):



Camera image at night conditions with external IR illuminator on:



Camera image at direct strong light opposite to camera:



Camera image at night conditions, at different illumination values show below:



10 LUX:



1 LUX:



0.1 LUX:



0.01 LUX:



## OUR OPINIONS



- Thanks to the "Starlight" technology used, the camera only needs very low lighting to obtain a clear color image.

## PACKAGE

Dimensions (L x W x H): 0x0x0 mm	Gross Weight: 0 kg
----------------------------------	--------------------

