

Code: DH-IPC-HDBW4231FP-M1

IP VANDALPROOF CAMERA **DH-IPC-HDBW4231FP-M1** 2-0280B - 1080p 2.8 mm DAHUA

Net: **239.59 EUR** Gross: **239.59 EUR**

IP camera with efficient H.264 / H.265 image compression algorithm for clear and smooth video streaming at maximal resolution of 1920 x 1080 (1080p).

PoE powering possibility, compatible with the 802.3af standard makes the device more universal and easier to install.

The camera has a very flat profile, it's only 51 mm out from the ceiling.

Attention! M12 connector.



SPECIFICATION

Standard:	TCP/IP
Sensor:	1/2.8 " Progressive Scan CMOS
Matrix size:	2.1 Mpx
Scanning system:	Progressive
Resolution:	1920 x 1080 - 1080p 1280 x 1024 - 1.4 Mpx 1280 x 960 - 1.3 Mpx 1280 x 720 - 720p
Lens:	2.8 mm
View angle:	110 °
Range of IR illumination:	20 m
S/N ratio:	> 50 dB
RS-485 interface:	—
Memory card slot:	Micro SD memory cards up to 128GB support (possible local recording)
Image compression method:	H.265 / H.264 / MJPEG
Alarm inputs / outputs:	—
Audio:	Microphone built-in
Bitrate:	14 ... 5632 kbps - H.265 24 ... 9472 kbps - H.264
Main stream frame rate:	50 fps @ 1080p
Network interface:	10/100 Base-T - M12, 4-pin socket
Network protocols:	HTTP, HTTPS, TCP, ARP, RTSP, RTP, UDP, SMTP, FTP, DHCP, DNS, DDNS, PPPoE, IPv4/IPv6, QoS, UPnP, NTP, Bonjour, IEEE 802.1x, Multicast, ICMP, IGMP, SNMP
WEB Server:	Built-in

DELTA-OPTI Monika Matysiak; <https://www.delta.poznan.pl>
POL; 60-713 Poznań; Graniczna 10
e-mail: delta-opti@delta.poznan.pl; tel: +(48) 61 864 69 60

Max. number of on-line users:	20
ONVIF:	2.42
Main features:	<ul style="list-style-type: none"> • 3D-DNR - Digital Noise Reduction • WDR - 120 dB - Wide Dynamic Range • BLC/HLC - Back Light / High Light Compensation • Possibility to change the resolution, quality and bit rate • Audio detection • IVS analysis : intrusion, crossing the line (tripwire), abandoned/missing object, scene changing, face detection • Configurable Privacy Zones • Mirror - Mirror image
Power supply:	PoE (802.3af)
Power consumption:	< 4.5 W
Mobile phones support:	Port no.: 37777 or access by a cloud (P2P) <ul style="list-style-type: none"> • Android: Free application DMSS, Android: Free application IMOU • iOS (iPhone): Free application DMSS, iOS (iPhone): Free application IMOU
Default admin user / password:	admin / admin
Default IP address:	192.168.1.108
Web browser access ports:	80, 37777
PC client access ports:	37777
Mobile client access ports:	37777
Port ONVIF:	80
RTSP URL:	rtsp://admin:hasło@192.168.1.108:554/cam/realmonitor?channel=1&subtype=0 - Main stream rtsp://admin:hasło@192.168.1.108:554/cam/realmonitor?channel=1&subtype=1 - Sub stream
Housing:	Dome, Metal
Color:	White
Vandal-proof:	IK10
"Index of Protection":	IP67
Operation temp:	-30 °C ... 60 °C
Weight:	0.326 kg
Dimensions:	Ø 106 x 51 mm
Supported languages:	English, Polish
Manufacturer / Brand:	DAHUA
Guarantee:	3 years

PRESENTATION

Camera view after remove the Dome cover:

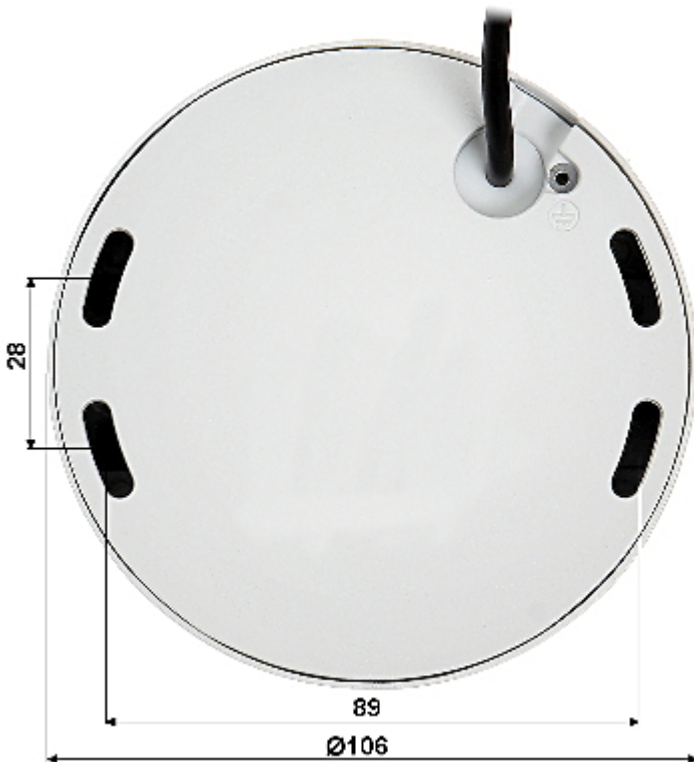




Memory card slot:



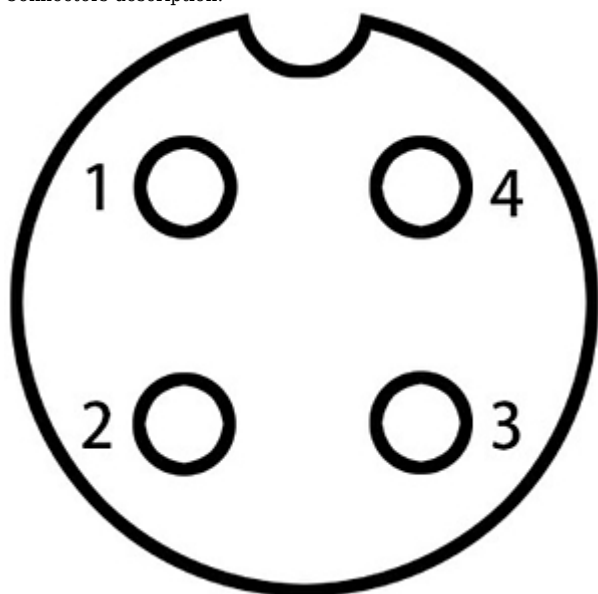
Mounting side view:



Camera connectors:



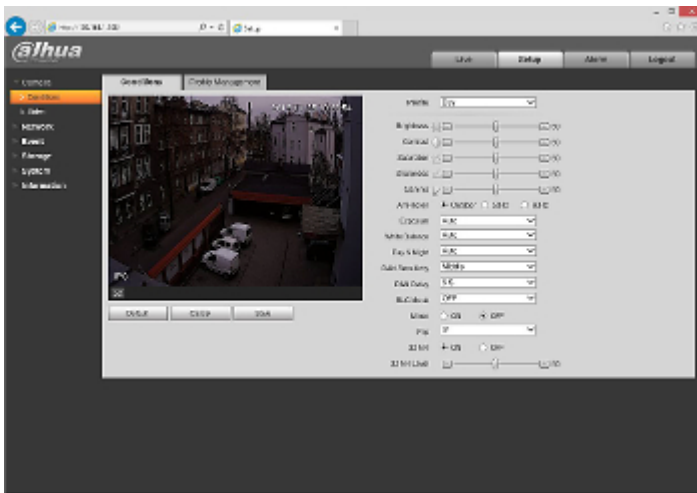
Connectors description:



- 1. Tx+: white/orange
 - 2. Rx+: white/green
 - 3. Tx-: orange
 - 4. Rx-: green
- (according to TIA/EIA568B standard)
In the kit:



Example captures of device interface:



See the ability of operation in imou cloud:

:

OUR TESTS

Camera image at artificial illumination (about 30Lux):



Camera image at night conditions with internal built-in IR illuminator on:



DELTA-OPTI Monika Matysiak; <https://www.delta.poznan.pl>
POL; 60-713 Poznań; Graniczna 10
e-mail: delta-opti@delta.poznan.pl; tel: +(48) 61 864 69 60

Camera image at direct strong light opposite to camera:



OUR OPINIONS



- The camera has a very flat profile, it's only 51 mm out from the ceiling.

PACKAGE

Dimensions (L x W x H): 0x0x0 mm	Gross Weight: 0 kg
----------------------------------	--------------------



DELTA-OPTI Monika Matysiak; <https://www.delta.poznan.pl>
POL; 60-713 Poznań; Graniczna 10
e-mail: delta-opti@delta.poznan.pl; tel: +(48) 61 864 69 60