

Code: DH-IPC-HDBW4431FP-A

# IP VANDALPROOF CAMERA **DH-IPC-HDBW4431FP-A** S-0360B - 4.0 Mpx 3.6 mm DAHUA

Net: **690.00 PLN** Gross: **690.00 PLN**

IP camera with efficient H.264 / H.265 image compression algorithm for clear and smooth video streaming at maximal resolution of 2688 x 1520 (4.0 MPx).

PoE powering possibility, compatible with the 802.3af standard makes the device more universal and easier to install.

The camera has a very flat profile, it's only 51 mm out from the ceiling.



## SPECIFICATION

Standard:	TCP/IP
Sensor:	1/3 " Progressive Scan CMOS
Matrix size:	4.0 Mpx
Scanning system:	Progressive
Resolution:	2688 x 1520 - 4.0 Mpx 2560 x 1440 - 3.6 Mpx 2304 x 1296 - 3.0 Mpx 1920 x 1080 - 1080p 1280 x 1024 - 1.4 Mpx 1280 x 960 - 1.3 Mpx 1280 x 720 - 720p
Lens:	3.6 mm
View angle:	• 87 ° (manufacturer data) • 79 ° (our tests result)
Range of IR illumination:	20 m
S/N ratio:	> 50 dB
RS-485 interface:	—
Memory card slot:	Micro SD memory cards up to 128GB support (possible local recording)
Image compression method:	H.265 / H.264 / MJPEG
Alarm inputs / outputs:	—
Audio:	Microphone built-in
Bitrate:	14 ... 9984 kbps - H.265 24 ... 10240 kbps - H.264
Main stream frame rate:	25 fps @ 4.0 Mpx 25 fps @ 3.0 Mpx
Network interface:	10/100 Base-T (RJ-45)
Network protocols:	HTTP, HTTPS, TCP, ARP, RTSP, RTP, UDP, SMTP, FTP, DHCP, DNS, DDNS, PPPoE, IPv4/IPv6, QoS, UPnP, NTP, Bonjour, IEEE 802.1x, Multicast, ICMP, IGMP, SNMP

DELTA-OPTI Monika Matysiak; <https://www.delta.poznan.pl>  
POL; 60-713 Poznań; Graniczna 10  
e-mail: [delta-opti@delta.poznan.pl](mailto:delta-opti@delta.poznan.pl); tel: +(48) 61 864 69 60

WEB Server:	Built-in
Max. number of on-line users:	20
ONVIF:	2.42
Main features:	<ul style="list-style-type: none"> <li>• 3D-DNR - Digital Noise Reduction</li> <li>• WDR - 120 dB - Wide Dynamic Range</li> <li>• BLC/HLC - Back Light / High Light Compensation</li> <li>• Possibility to change the resolution, quality and bit rate</li> <li>• Audio detection</li> <li>• IVS analysis : intrusion, crossing the line (tripwire), abandoned/missing object, scene changing, face detection</li> <li>• Configurable Privacy Zones</li> <li>• Mirror - Mirror image</li> </ul>
Color:	White
Power supply:	<ul style="list-style-type: none"> <li>• PoE (802.3af),</li> <li>• 12 V DC / 350 mA</li> </ul>
Power consumption:	< 4.5 W
Mobile phones support:	Port no.: 37777 or access by a cloud (P2P) <ul style="list-style-type: none"> <li>• Android: Free application <a href="#">DMSS</a>, Android: Free application <a href="#">IMOU</a></li> <li>• iOS (iPhone): Free application <a href="#">DMSS</a>, iOS (iPhone): Free application <a href="#">IMOU</a></li> </ul>
Default admin user / password:	admin / admin
Default IP address:	192.168.1.108
Web browser access ports:	80, 37777
PC client access ports:	37777
Mobile client access ports:	37777
Port ONVIF:	80
RTSP URL:	rtsp://admin:hasło@192.168.1.108:554/cam/realmonitor?channel=1&subtype=0 - Main stream rtsp://admin:hasło@192.168.1.108:554/cam/realmonitor?channel=1&subtype=1 - Sub stream
Housing:	Dome, Metal
Vandal-proof:	✓
"Index of Protection":	IP67
Dimensions:	Ø 106 x 51 mm
Weight:	0.326 kg
Supported languages:	English, Polish
Manufacturer / Brand:	DAHUA
Guarantee:	<b>3 years</b>

## PRESENTATION

Camera view after remove the Dome cover:



DELTA-OPTI Monika Matysiak; <https://www.delta.poznan.pl>  
 POL; 60-713 Poznań; Graniczna 10  
 e-mail: [delta-opti@delta.poznan.pl](mailto:delta-opti@delta.poznan.pl); tel: +(48) 61 864 69 60



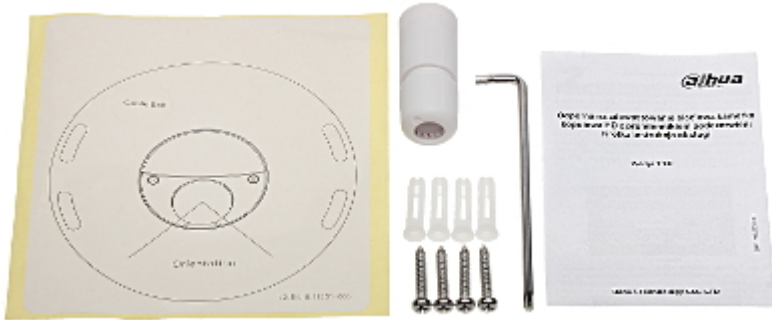
Memory card slot:



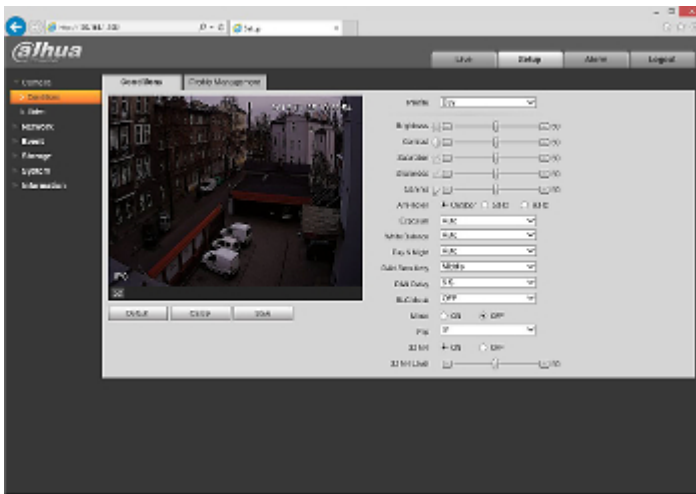
Mounting side view:



In the kit:



Example captures of device interface:



## OUR TESTS

Camera image at artificial illumination (about 30Lux):



Camera image at night conditions with internal built-in IR illuminator on:



Camera image at direct strong light opposite to camera:



## OUR OPINIONS



- The camera has a very flat profile, it's only 51 mm out from the ceiling.

## PACKAGE

Dimensions (L x W x H): 0x0x0 mm	Gross Weight: 0 kg
----------------------------------	--------------------

