

Code: HAC-HDBW2220F-M-0280B

# HD-CVI VANDALPROOF CAMERA **HAC-HDBW2220F-M-0280B** - 1080p 2.8 mm DAHUA

Net: **457.00 PLN** Gross: **457.00 PLN**

Megapixel camera with 1/2.7" CMOS sensor and HD-CVI (High Definition Composite Video Interface).

The HD-CVI interface allows to transmission of analog, composite video signal via coaxial cable. It enables the transmission of HD resolution images for even 500 m distance with keeping the low costs of the installation. During transmission there are no delays and is maintained the original, high quality image.

The camera has a very flat profile, it's only 51 mm out from the ceiling.

ATTENTION! M12 connector.



## SPECIFICATION

Standard:	HD-CVI
Sensor:	1/2.7 " CMOS
Matrix size:	2.1 Mpx
Resolution:	1920 x 1080 - 1080p 1280 x 720 720p
Range of IR illumination:	20 m
IR illuminator power adjustment:	Automatic
Lens:	2.8 mm
View angle:	<ul style="list-style-type: none"><li>• 106 ° (manufacturer data)</li><li>• 99 ° (our tests result)</li></ul>
IR illuminator support:	ICR - Movable InfraRed filter
S/N ratio:	> 65 dB
Video output:	<ul style="list-style-type: none"><li>• HD-CVI, 1 Vpp / 75 Ω - M12, 4-pin socket</li><li>• CVBS, SPOT - PAL, 1 Vpp / 75 Ω - BNC socket</li></ul>
Audio:	Microphone built-in
Main features:	<ul style="list-style-type: none"><li>• D-WDR - Wide Dynamic Range</li><li>• 2D-DNR / 3D-DNR - Digital Noise Reduction</li><li>• F-DNR (Defog) - Reduction of image noise caused by precipitation</li><li>• ICR - Movable InfraRed filter</li><li>• BLC/HLC - Back Light / High Light Compensation</li><li>• Mirror - Mirror image</li><li>• Motion Detection</li><li>• Additional "Spot" CVBS output - allows to quick view the image from camera and its configuration without the need to disconnect it from monitoring system</li><li>• Auto White Balance</li></ul>
OSD menu:	OSD menu available via DAHUA recorder
Power supply:	12 V DC / 290 mA
Power consumption:	≤ 3.5 W

DELTA-OPTI Monika Matysiak; <https://www.delta.poznan.pl>  
POL; 60-713 Poznań; Graniczna 10  
e-mail: [delta-opti@delta.poznan.pl](mailto:delta-opti@delta.poznan.pl); tel: +(48) 61 864 69 60

Housing:	Dome, Aluminum
Color:	White
Vandal-proof:	IK10
"Index of Protection":	IP67
Operation temp:	-30 °C ... 60 °C
Weight:	0.33 kg
Dimensions:	Ø 106 x 51 mm
Manufacturer / Brand:	DAHUA
Guarantee:	<b>3 years</b>

## PRESENTATION

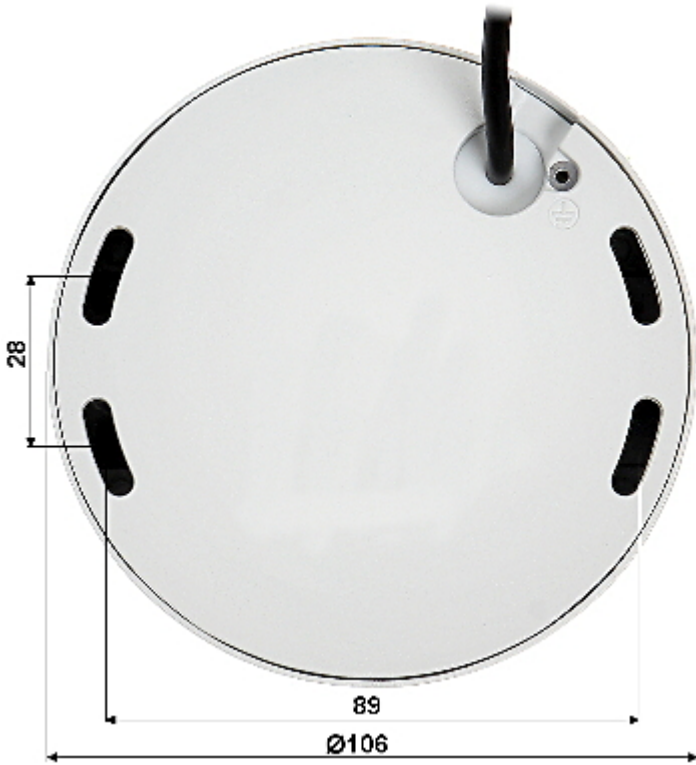
Camera view after remove the Dome cover:



CVBS, SPOT output:



Mounting side view:



M12 connector:



In the kit:



## OUR TESTS

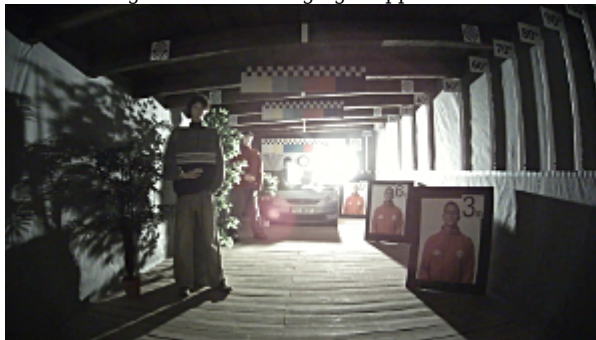
Camera image at artificial illumination (about 30Lux):



Camera image at night conditions with internal built-in IR illuminator on:



Camera image at direct strong light opposite to camera:



## OUR OPINIONS



- The camera has a very flat profile, it's only 51 mm out from the ceiling.

## PACKAGE

Dimensions (L x W x H): 0x0x0 mm	Gross Weight: 0 kg
----------------------------------	--------------------