

Code: DH-IPC-HDBW8232EP-Z

IP VANDALPROOF CAMERA **DH-IPC-HDBW8232EP-Z** - 1080p, 4.1 ... 16.4 mm - MOTOZOOM DAHUA

Net: **778.68 EUR** Gross: **778.68 EUR**

IP camera with efficient H.264 / H.265 image compression algorithm for clear and smooth video streaming at maximal resolution of 1920 x 1080 (1080p). Due to above it is perfect solution for surveillance systems requiring persons or vehicles recognition.

The used motozoom lens with 4.1 ... 16.4 mm focal length allows to remote view angle adjustment. The range of IR illumination according to the manufacturer data, depends on outer conditions (visibility - air transparency, environment, wall colors ie. scene reflectance).

The camera housing is made of high quality 316L stainless steel. As a result, the camera housing, beyond the high degree of protection against penetration of water and contaminants IP67 and resistance to mechanical damage IK10, is protected against corrosion to meet the stringent criteria of category 4X in classification NEMA.

PoE powering possibility, compatible with the 802.3at standard makes the device more universal and easier to install.



SPECIFICATION

Standard:	TCP/IP
Sensor:	1/1.9 " Progressive Scan CMOS
Matrix size:	2.1 Mpx
Resolution:	1920 x 1080 - 1080p , 1280 x 960 - 1.3 Mpx , 1280 x 720 - 720p ,
Lens:	4.1 ... 16.4 mm - Motozoom
View angle:	<ul style="list-style-type: none">• 92 ° ... 32 ° (manufacturer data)• 95 ° ... 32 ° (our tests result)
Range of IR illumination:	50 m
S/N ratio:	> 50 dB
RS-485 interface:	—
Memory card slot:	Micro SD memory cards up to 128GB support (possible local recording)
Image compression method:	H.265 / H.264 / MJPEG
Alarm inputs / outputs:	2 / 1
Audio:	<ul style="list-style-type: none">• External microphone input• Audio output• Bi-directional audio streaming support• Audio detection
Bitrate:	24 kb/s ... 10240 kb/s - H.264 14 ... 6144 kbps - H.265
Network interface:	10/100 Base-T (RJ-45)

DELTA-OPTI Monika Matysiak; <https://www.delta.poznan.pl>
POL; 60-713 Poznań; Graniczna 10
e-mail: delta-opti@delta.poznan.pl; tel: +(48) 61 864 69 60

Network protocols:	HTTP, HTTPS, TCP, ARP, RTSP, RTP, UDP, SMTP, FTP, DHCP, DNS, DDNS, PPPoE, IPv4/IPv6, QoS, UPnP, NTP, Bonjour, IEEE 802.1x, Multicast, ICMP, IGMP, SNMP
WEB Server:	Built-in, Web Viewer
Max. number of on-line users:	20
ONVIF:	16.12
Main stream frame rate:	50 fps @ 1080p
Mobile phones support:	Port no.: 37777 or access by a cloud (P2P) <ul style="list-style-type: none"> • Android: Free application DMSS, Android: Free application IMOU • iOS (iPhone): Free application DMSS, iOS (iPhone): Free application IMOU
Default IP address:	192.168.1.108
Default admin user / password:	admin / admin
Web browser access ports:	80, 37777
PC client access ports:	37777
Mobile client access ports:	37777
Port ONVIF:	80
RTSP URL:	rtsp://admin:haslo@192.168.1.108:554/cam/realmonitor?channel=1&subtype=0 - Main stream rtsp://admin:haslo@192.168.1.108:554/cam/realmonitor?channel=1&subtype=1 - Sub stream
Main features:	<ul style="list-style-type: none"> • Motozoom lens • ICR - Movable InfraRed filter • WDR - 120 dB - Wide Dynamic Range • 3D-DNR - Digital Noise Reduction • F-DNR (Defog) - Reduction of image noise caused by precipitation • ROI - improve the quality of selected parts of image • EIS - Electronic Image Stabilization • BLC - configurable Back Light Compensation • HLC - High Light Compensation (spot) • WB - White Balance (ATW/AWB/manual/indoor/outdoor) • Motion Detection • Configurable Privacy Zones • Mirror - Mirror image • Sharpness - sharper image outlines • Heat map - the selection in the image by corresponding colors the areas with different traffic • IVS analysis : crossing the line (tripwire), intrusion, abandoned/missing object, face detection, people counting, heat map • Corrosion protection in accordance with the requirements of NEMA 4X
Power supply:	<ul style="list-style-type: none"> • PoE (802.3at), • 12 V DC / 1500 mA - Heater on, • 24 V AC / 750 mA - Heater on
Power consumption:	≤ 18 W
Housing:	Dome - Stainless steel : 316L
Color:	White
"Index of Protection":	IP67
Vandal-proof:	IK10
Operation temp:	-40 °C ... 60 °C
Weight:	2.25 kg
Dimensions:	Ø 162 x 118 mm
Supported languages:	English, Polish
Manufacturer / Brand:	DAHUA
Guarantee:	3 years

PRESENTATION



DELTA-OPTI Monika Matysiak; <https://www.delta.poznan.pl>
POL; 60-713 Poznań; Graniczna 10
e-mail: delta-opti@delta.poznan.pl; tel: +(48) 61 864 69 60

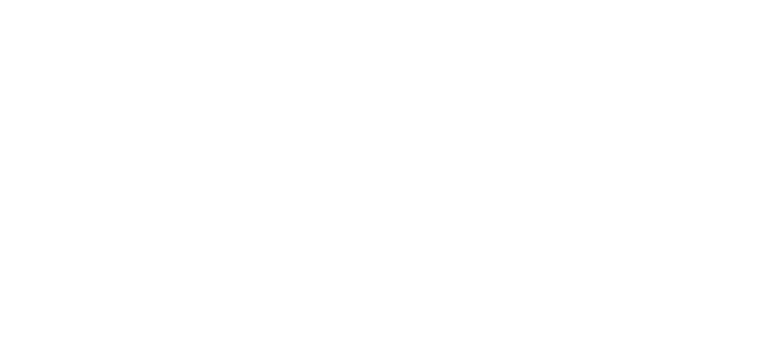
Camera view after remove the Dome cover:

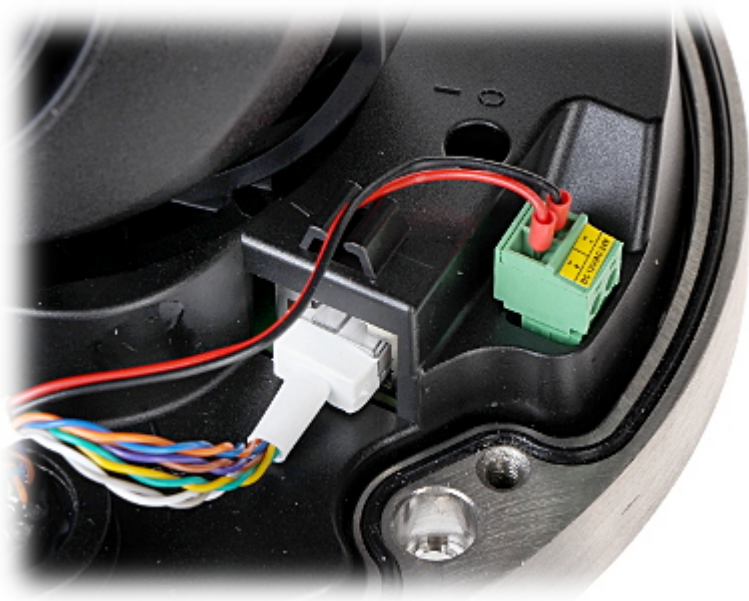
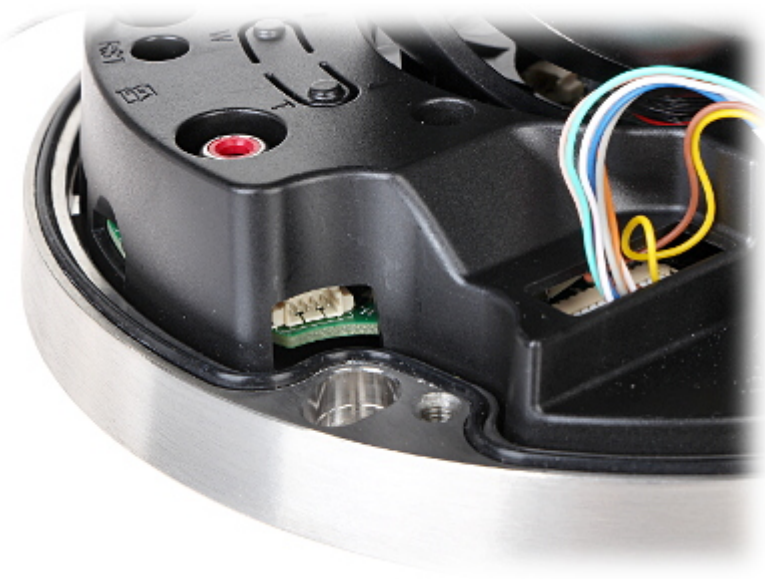


Memory card slot:



Camera connectors:

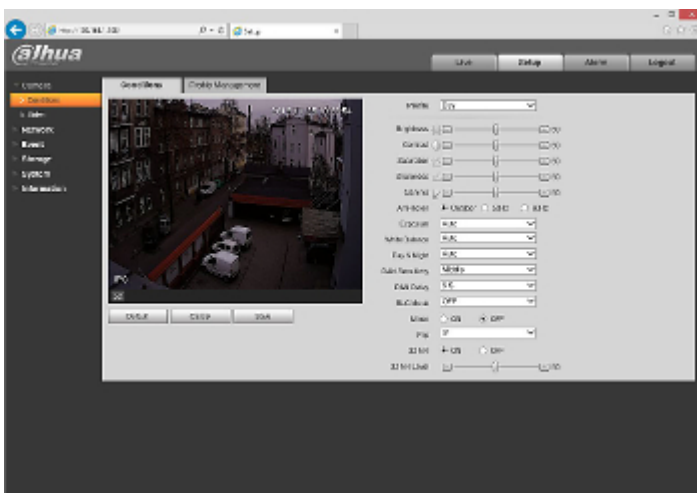




Mounting side view:



Example captures of device interface:



See the ability of operation in imou cloud:

:

In the kit:

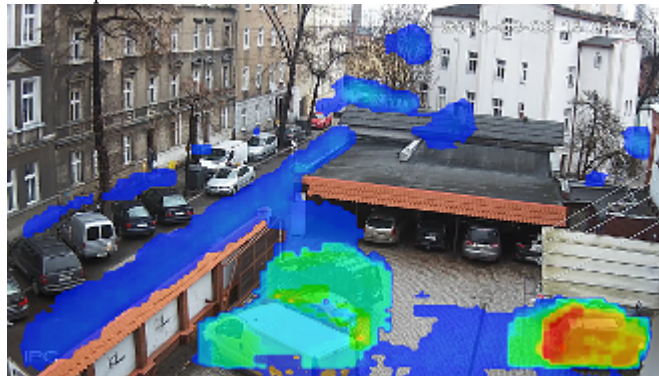


DELTA-OPTI Monika Matysiak; <https://www.delta.poznan.pl>
 POL; 60-713 Poznań; Graniczna 10
 e-mail: delta-opti@delta.poznan.pl; tel: +(48) 61 864 69 60

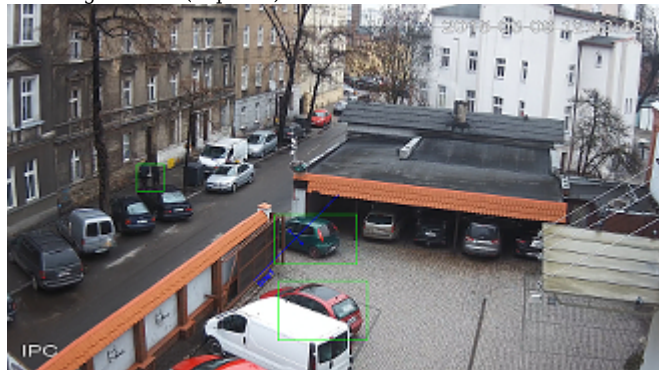


OUR TESTS

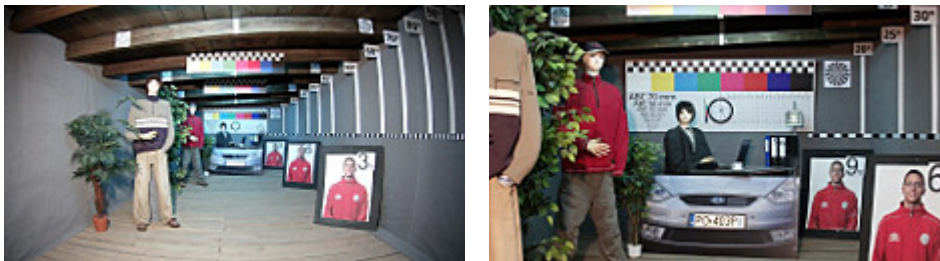
Heat map function:



Crossing the line (tripwire) function:



Camera image at artificial illumination (about 30Lux):



Camera image at night conditions with internal built-in IR illuminator on:





Camera image at direct strong light opposite to camera:



PACKAGE

Dimensions (L x W x H): 0x0x0 mm	Gross Weight: 0 kg
----------------------------------	--------------------

