

Code: IPC-HDBW1230R-ZS-2812-S5

IP VANDALPROOF CAMERA **IPC-HDBW1230R-ZS-2812-S5** - 1080p 2.8 ... 12 mm - MOTOZOOM DAHUA

Net: **942.00 PLN** Gross: **942.00 PLN**

Entry series IP camera with efficient H.265 / H.264 image compression algorithm for clear and smooth video streaming at maximal resolution of 1080p. The range of IR illumination according to the manufacturer data, depends on outer conditions (visibility - air transparency, environment, wall colors ie. scene reflectance).

The used motozoom lens with 2.8 ... 12 mm focal length allows to remote view angle adjustment.

PoE powering possibility, compatible with the 802.3af standard makes the device more universal and easier to install.



SPECIFICATION

Standard:	TCP/IP
Sensor:	1/2.8 " Progressive Scan CMOS
Matrix size:	2.1 Mpx
Resolution:	1920 x 1080 - 1080p , 1280 x 960 - 1.3 Mpx 1280 x 720 - 720p
Lens:	2.8 ... 12 mm - Motozoom
View angle:	<ul style="list-style-type: none">• 101 ° ... 34 ° (manufacturer data)• 92 ° ... 34 ° (our tests result)
Range of IR illumination:	40 m
RS-485 interface:	—
Memory card slot:	Micro SD memory cards up to 256GB support (possible local recording)
Image compression method:	H.265+ / H.265 / H.264+ / H.264 / MJPEG
Network interface:	10/100 Base-T (RJ-45)
Network protocols:	IPv4/IPv6, HTTP, TCP, UDP, ARP, RTP, SMTP, FTP, DHCP, DNS, NTP, Multicast
WEB Server:	Built-in
Max. number of on-line users:	6
ONVIF:	19.12
Mobile phones support:	Port no.: 37777 or access by a cloud (P2P) <ul style="list-style-type: none">• Android: Free application DMSS• iOS (iPhone): Free application DMSS

DELTA-OPTI Monika Matysiak; <https://www.delta.poznan.pl>
POL; 60-713 Poznań; Graniczna 10
e-mail: delta-opti@delta.poznan.pl; tel: +(48) 61 864 69 60

Default admin user / password:	admin / - The administrator password should be set at the first start
Default IP address:	192.168.1.108
Web browser access ports:	80, 37777
PC client access ports:	37777
Mobile client access ports:	37777
Port ONVIF:	80
RTSP URL:	rtsp://admin:haslo@192.168.1.108:554/cam/realmonitor?channel=1&subtype=0 - Main stream rtsp://admin:haslo@192.168.1.108:554/cam/realmonitor?channel=1&subtype=1 - Sub stream
Main stream frame rate:	25 fps @ 1080p
Main features:	<ul style="list-style-type: none"> • Motozoom lens - Controlling from browser, NVR or software • D-WDR - Wide Dynamic Range • 3D-DNR - Digital Noise Reduction • ROI - improve the quality of selected parts of image • BLC - configurable Back Light Compensation • HLC - High Light Compensation (spot) • Day/night mode • ICR - Movable InfraRed filter • WB - White Balance • AGC - Automatic Gain Control • Mirror - Mirror image • Configurable Privacy Zones • Motion Detection
Power supply:	<ul style="list-style-type: none"> • PoE (802.3af), • 12 V DC / 530 mA
Power consumption:	<ul style="list-style-type: none"> • ≤ 5.5 W @ 12 V DC • ≤ 5.9 W @ PoE (802.3af)
Housing:	Dome - Metal
Color:	White
Vandal-proof:	IK10
"Index of Protection":	IP67
Operation temp:	-30 °C ... 60 °C
Weight:	0.45 kg
Dimensions:	Ø 122 x 89 mm
Supported languages:	English, Spanish, Russian
Manufacturer / Brand:	DAHUA
Guarantee:	3 years

PRESENTATION

Camera view after remove the Dome cover:





Memory card slot:



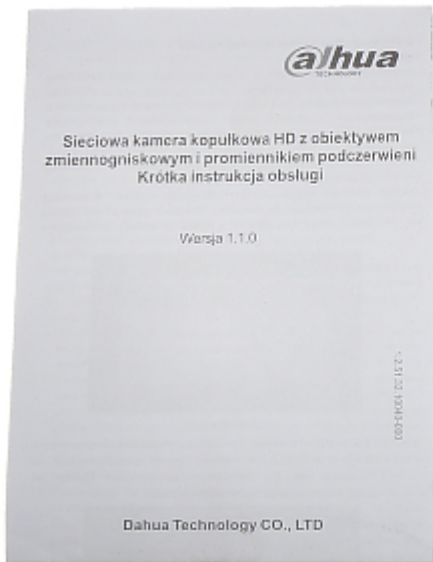
Mounting side view:



See how to initialize DAHUA cameras:

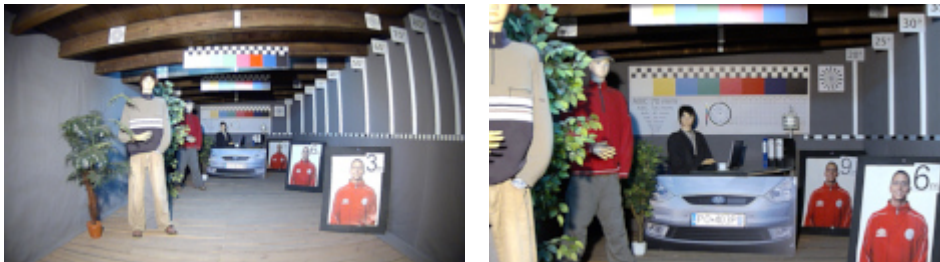
:

In the kit:



OUR TESTS

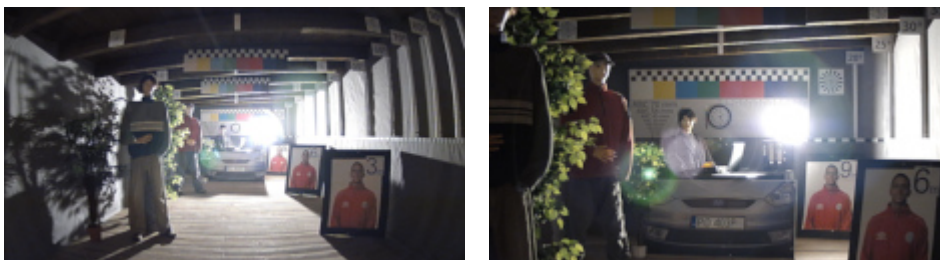
Camera image at artificial illumination (about 30Lux):



Camera image at night conditions with internal built-in IR illuminator on:



Camera image at direct strong light opposite to camera:



PACKAGE

Dimensions (L x W x H): 0x0x0 mm	Gross Weight: 0 kg
----------------------------------	--------------------



DELTA-OPTI Monika Matysiak; <https://www.delta.poznan.pl>
POL; 60-713 Poznań; Graniczna 10
e-mail: delta-opti@delta.poznan.pl; tel: +(48) 61 864 69 60