

Code: DH-IPC-HDBW81230EP-Z

IP VANDALPROOF CAMERA **DH-IPC-HDBW81230EP-Z** - 12.0 Mpx 4.1 ... 16.4 mm - MOTOZOOM DAHUA Net: 3 365.00 PLN Gross: 3 365.00 PLN

IP camera with efficient H.264 image compression algorithm for clear and smooth video streaming at maximal resolution of 4000 x 3000 (12.0 MPx). Due to above it is perfect solution for surveillance systems requiring persons or vehicles recognition. The used motozoom lens with 4.1 ... 16.4 mm focal length allows to remote view angle adjustment.

Very easy operation by Internet Explorer browser allows the users to convenient and remote support, and also remote management of the camera. Included camera software enables management and integrated monitoring of many network cameras.

The range of IR illumination according to the manufacturer data, depends on outer conditions (visibility - air transparency, environment, wall colors ie. scene reflectance).

IVS analysis - crossing the line (tripwire), intrusion, scene changing, abandoned/missing object, face detection, people counting.



SPECIFICATION

| | |
|---------------------------|---|
| Standard: | TCP/IP |
| Sensor: | 1/1.7 " Progressive Scan CMOS |
| Matrix size: | 12.0 Mpx |
| Resolution: | 4000 x 3000 - 12.0 Mpx , 3840 x 2160 - 8.3 Mpx , 3072 x 2048 - 6.3 Mpx , 2560 x 1920 - 5.0 Mpx , 2048 x 1536 - 3.1 Mpx , 2304 x 1296 - 3.0 Mpx , 1920 x 1080 - 1080p 1280 x 960 - 1.3 Mpx 1280 x 720 - 720p |
| Lens: | 4.1 ... 16.4 mm - Motozoom |
| View angle: | 105 ° ... 35 ° |
| Range of IR illumination: | 50 m |
| S/N ratio: | > 50 dB |
| RS-485 interface: | — |
| Memory card slot: | Micro SD memory cards up to 128GB support (possible local recording) |
| Image compression method: | H.265 / H.264 / MJPEG |
| Alarm inputs / outputs: | 1 / 1 |
| Audio: | <ul style="list-style-type: none">• External microphone input• Audio output• Bi-directional audio streaming support• Audio detection |

DELTA-OPTI Monika Matysiak; <https://www.delta.poznan.pl>
POL; 60-713 Poznań; Graniczna 10
e-mail: delta-opti@delta.poznan.pl; tel: +(48) 61 864 69 60

| | |
|--------------------------------|---|
| Bitrate: | 24 kb/s ... 14592 kb/s @ H.264 14 kb/s ... 8704 kb/s @ H.265 |
| Network interface: | 10/100 Base-T (RJ-45) |
| Network protocols: | IPv4/IPv6, HTTP, HTTPS, SSL, TCP/IP, UDP, UPnP, ICMP, IGMP, SNMP, RTSP, RTP, SMTP, NTP, DHCP, DNS, PPPOE, DDNS, FTP, IP Filter, QoS, Bonjour |
| WEB Server: | Built-in, Web Viewer |
| Max. number of on-line users: | 20 |
| ONVIF: | 2.42 |
| Main stream frame rate: | 20 fps @ 12 Mpx 25 fps @ 8.3 Mpx |
| Mobile phones support: | Port no.: 37777 or access by a cloud (P2P) • Android: Free application DMSS • iOS (iPhone): Free application DMSS |
| Default admin user / password: | admin / admin |
| Default IP address: | 192.168.1.108 |
| Web browser access ports: | 80, 37777 |
| PC client access ports: | 37777 |
| Mobile client access ports: | 37777 |
| Port ONVIF: | 80 |
| RTSP URL: | rtsp://admin:hasło@192.168.1.108:554/cam/realmonitor?channel=1&subtype=0 - Main stream rtsp://admin:hasło@192.168.1.108:554/cam/realmonitor?channel=1&subtype=1 - Sub stream |
| Main features: | <ul style="list-style-type: none"> • Motozoom lens • DNR - Digital Noise Reduction • AGC - Automatic Gain Control • ABF - (Auto Back Focus) - auto focus correction during day/night operation modes switching • Heat map - the selection in the image by corresponding colors the areas with different traffic • IVS analysis : crossing the line (tripwire), intrusion, scene changing, abandoned/missing object, people counting, face detection, heat map • WB - White Balance (ATW/AWB/manual/indoor/outdoor) • WDR - Wide Dynamic Range • BLC - configurable Back Light Compensation • HLC - High Light Compensation (spot) • ICR - Movable InfraRed filter • Day/Night mode (color/b&w/auto) • Audio detection • Motion Detection • Configurable Privacy Zones • Mirror - Mirror image • Sharpness - sharper image outlines |
| Power supply: | <ul style="list-style-type: none"> • PoE (802.3at) • 12 V DC / 1500 mA, • 24 V AC / 750 mA |
| Power consumption: | < 18 W |
| "Index of Protection": | IP67 |
| Vandal-proof: | IK10 |
| Housing: | Dome - Metal |
| Color: | White |
| Operation temp: | -30 °C ... 60 °C |
| Weight: | 0.97 kg |
| Dimensions: | Ø 159 x 118 mm |



| | |
|-----------------------|-----------------|
| Supported languages: | English, Polish |
| Manufacturer / Brand: | DAHUA |
| Guarantee: | 3 years |

PRESENTATION

Camera view after remove the Dome cover:





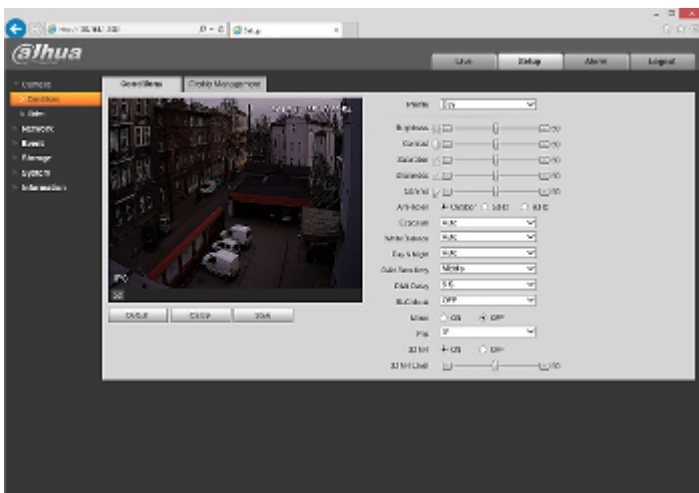
Mounting side view:



Camera with mounted bracket (bracket included):



Example captures of device interface:

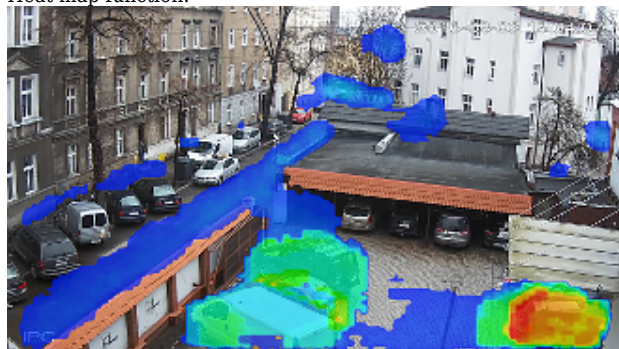


In the kit:



OUR TESTS

Heat map function:



DELTA-OPTI Monika Matysiak; <https://www.delta.poznan.pl>
 POL; 60-713 Poznań; Graniczna 10
 e-mail: delta-opti@delta.poznan.pl; tel: +(48) 61 864 69 60

Crossing the line (tripwire) function:



Camera image at artificial illumination (about 30Lux):



Camera image at night conditions with internal built-in IR illuminator on:



Camera image at direct strong light opposite to camera:





PACKAGE

| | |
|----------------------------------|--------------------|
| Dimensions (L x W x H): 0x0x0 mm | Gross Weight: 0 kg |
|----------------------------------|--------------------|