

Code: IPC-HDBW81230E-ZH

**IP VANDALPROOF CAMERA IPC-HDBW81230E-ZH - 12.0 Mpx 4.1 ...
16.4 mm - MOTOZOOM DAHUA**
Net: 3 365.00 PLN Gross: 3 365.00 PLN

IP camera with efficient H.265 image compression algorithm for clear and smooth video streaming at maximal resolution of 4000 x 3000 (12.0 MPx). Due to above it is perfect solution for surveillance systems requiring persons or vehicles recognition. The range of IR illumination according to the manufacturer data, depends on outer conditions (visibility - air transparency, environment, wall colors ie. scene reflectance).
The used motozoom lens with 4.1 ... 16.4 mm focal length allows to remote view angle adjustment.



SPECIFICATION

Standard:	TCP/IP
Sensor:	1/1.7 " Progressive Scan CMOS
Matrix size:	12.0 Mpx
Resolution:	4000 x 3000 - 12.0 Mpx , 3840 x 2160 - 8.3 Mpx , 3072 x 2048 - 6.3 Mpx , 2560 x 1920 - 5.0 Mpx , 2048 x 1536 - 3.1 Mpx , 2304 x 1296 - 3.0 Mpx , 1920 x 1080 - 1080p 1280 x 960 - 1.3 Mpx 1280 x 720 - 720p
Lens:	4.1 ... 16.4 mm - Motozoom
View angle:	<ul style="list-style-type: none">• 105 ° ... 35 ° (manufacturer data)• 100 ° ... 33 ° (our tests result)
Range of IR illumination:	50 m
S/N ratio:	> 50 dB
RS-485 interface:	—
Memory card slot:	Micro SD memory cards up to 128GB support (possible local recording)
Image compression method:	H.265 / H.264 / MJPEG
Alarm inputs / outputs:	1 / 1
Audio:	<ul style="list-style-type: none">• External microphone input• Audio output• Bi-directional audio streaming support• Audio detection

DELTA-OPTI Monika Matysiak; <https://www.delta.poznan.pl>
POL; 60-713 Poznań; Graniczna 10
e-mail: delta-opti@delta.poznan.pl; tel: +(48) 61 864 69 60

Bitrate:	24 kb/s ... 14592 kb/s @ H.264 14 kb/s ... 8704 kb/s @ H.265
Network interface:	10/100 Base-T (RJ-45)
Network protocols:	HTTP, HTTPS, TCP, ARP, RTSP, RTP, UDP, SMTP, FTP, DHCP, DNS, DDNS, PPPoE, IPv4/IPv6, QoS, UPnP, NTP, Bonjour, IEEE 802.1x, Multicast, ICMP, IGMP
WEB Server:	Built-in, Web Viewer
Max. number of on-line users:	20
ONVIF:	16.12
Main stream frame rate:	20 fps @ 12 Mpx 25 fps @ 8.3 Mpx
Mobile phones support:	Port no.: 37777 or access by a cloud (P2P) • Android: Free application DMSS • iOS (iPhone): Free application DMSS
Default admin user / password:	admin / admin
Default IP address:	192.168.1.108
Web browser access ports:	80, 37777
PC client access ports:	37777
Mobile client access ports:	37777
Port ONVIF:	80
RTSP URL:	rtsp://admin:hasło@192.168.1.108:554/cam/realmonitor?channel=1&subtype=0 - Main stream rtsp://admin:hasło@192.168.1.108:554/cam/realmonitor?channel=1&subtype=1 - Sub stream
Main features:	<ul style="list-style-type: none"> • Motozoom lens • WDR - Wide Dynamic Range • 2D-DNR / 3D-DNR - Digital Noise Reduction • F-DNR (Defog) - Reduction of image noise caused by precipitation • EIS - Electronic Image Stabilization • ROI - improve the quality of selected parts of image • AGC - Automatic Gain Control • ICR - Movable InfraRed filter • ABF - (Auto Back Focus) - auto focus correction during day/night operation modes switching • Heat map - the selection in the image by corresponding colors the areas with different traffic • IVS analysis : crossing the line (tripwire), intrusion, scene changing, abandoned/missing object, people counting, face detection, heat map • WB - White Balance (ATW/AWB/manual/indoor/outdoor) • BLC - configurable Back Light Compensation • HLC - High Light Compensation (spot) • Day/Night mode (color/b&w/auto) • Audio detection • Motion Detection • Configurable Privacy Zones • Mirror - Mirror image • Sharpness - sharper image outlines • The device has a built-in heater
Power supply:	<ul style="list-style-type: none"> • PoE (802.3at) • 12 V DC / 2000 mA, • 24 V AC / 1500 mA
Power consumption:	≤ 24 W
Housing:	Dome - Metal
Color:	White
Vandal-proof:	IK10
"Index of Protection":	IP67
Operation temp:	-40 °C ... 60 °C



Weight:	0.95 kg
Dimensions:	Ø 159 x 118 mm
Supported languages:	English, Polish
Manufacturer / Brand:	DAHUA
Guarantee:	3 years

PRESENTATION

Camera view after remove the Dome cover:





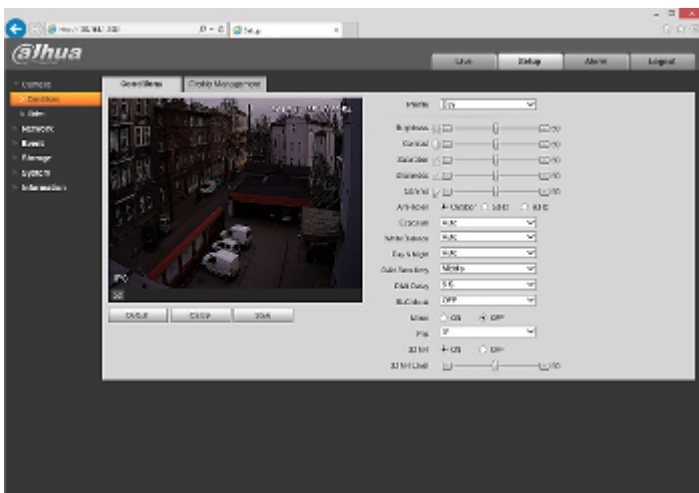
Mounting side view:



Camera with mounted bracket (bracket included):



Example captures of device interface:



See how to initialize DAHUA cameras:

:

In the kit:

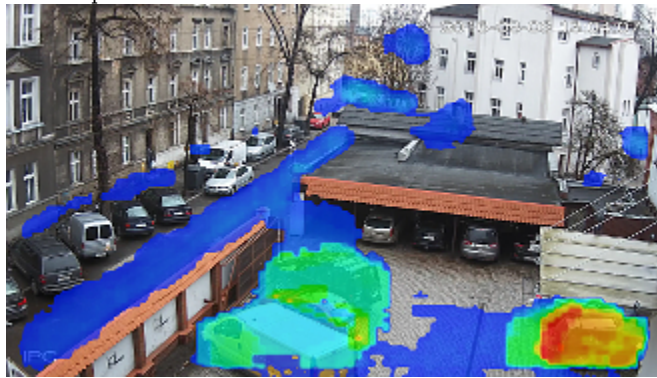


OUR TESTS

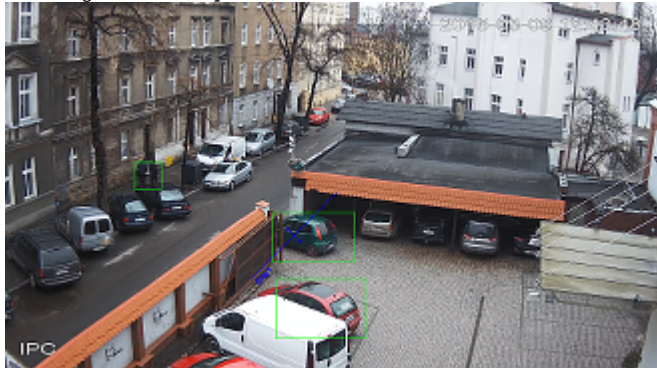
Record from camera during daylight operation:

:

Heat map function:



Crossing the line (tripwire) function:



Camera image at artificial illumination (about 30Lux):



Camera image at night conditions with internal built-in IR illuminator on:



Camera image at direct strong light opposite to camera:



PACKAGE

Dimensions (L x W x H): 0x0x0 mm	Gross Weight: 0 kg
----------------------------------	--------------------