

Code: GT-CI12C5-28VF

IP CAMERA **GT-CI12C5-28VF** - 720p 2.8 ... 12 mm GEMINI TECHNOLOGY

Net: **71.26 EUR** Gross: **71.26 EUR**

IP camera with efficient H.264 image compression algorithm for clear and smooth video streaming at maximal resolution of 720p.

The range of IR illumination according to the manufacturer data, depends on outer conditions (visibility - air transparency, environment, wall colors ie. scene reflectance).



SPECIFICATION

Standard:	TCP/IP
Sensor:	1/2.7 " Brigates BG0703 CMOS
Digital Image Processor:	Hisilicon 3518E V200
Matrix size:	1.0 Mpx
Resolution:	1280 x 720 - 720p 640 x 480 - VGA 640 x 360 - Q720p
Lens:	2.8 ... 12 mm
View angle:	• 88 ° ... 25 ° (manufacturer data) • 100 ° ... 34 ° (our tests result)
S/N ratio:	> 50 dB
Range of IR illumination:	50 m
IR illuminator power adjustment:	By potentiometer
Image compression method:	H.264
Alarm inputs / outputs:	—
Bitrate:	16 ... 8000 kbps
Main stream frame rate:	max. 25 fps - 720p
Network interface:	10/100 Base-T (RJ-45)
Network protocols:	TCP/IP, UDP, HTTP, DHCP, RTSP, DDNS, NTP, PPPoE, UPnP, SMTP
Audio:	—
Mobile phones support:	Port no.: 5800 or access by a cloud (P2P) • Android: Free application Fseye • iOS: Free application Fseye

DELTA-OPTI Monika Matysiak; <https://www.delta.poznan.pl>
POL; 60-713 Poznań; Graniczna 10
e-mail: delta-opti@delta.poznan.pl; tel: +(48) 61 864 69 60

Default IP address:	192.168.1.188
Default admin user / password:	admin / (null)
Web browser access ports:	80, 554, 1935
PC client access ports:	5050, 5051, 5052
WEB Server:	Built-in
Mobile client access ports:	5800
Max. number of on-line users:	10
Port ONVIF:	80
ONVIF:	2.21
RTSP URL:	rtsp://ip_address:554/ch01.264 - Main stream rtsp://ip_address:554/ch01_sub.264 - Sub stream
RS-485 interface:	—
Main features:	<ul style="list-style-type: none"> • 3D-DNR - Digital Noise Reduction • WDR - Wide Dynamic Range • ICR - Movable InfraRed filter • Possibility to change the resolution, quality and bit rate • Time mark and image description • Image rotation and mirror • Configurable: brightness, contrast, saturation • Day/Night mode - configurable • Possibility to add different privileges to the users • Privacy zones - max. 4 • Sharpness - sharper image outlines
Power supply:	12 V DC / 420 mA
Power consumption:	≤ 5.0 W
Housing:	Compact, Metal
Color:	Graphite
"Index of Protection":	IP67
Supported languages:	English, Polish
Operation temp:	-20 °C ... 60 °C
Weight:	0.82 kg
Dimensions:	260 x 123 x 92 mm
Manufacturer / Brand:	GEMINI TECHNOLOGY
Guarantee:	2 years

PRESENTATION

Front view:



DELTA-OPTI Monika Matysiak; <https://www.delta.poznan.pl>
POL; 60-713 Poznań; Graniczna 10
e-mail: delta-opti@delta.poznan.pl; tel: +(48) 61 864 69 60



Side view:



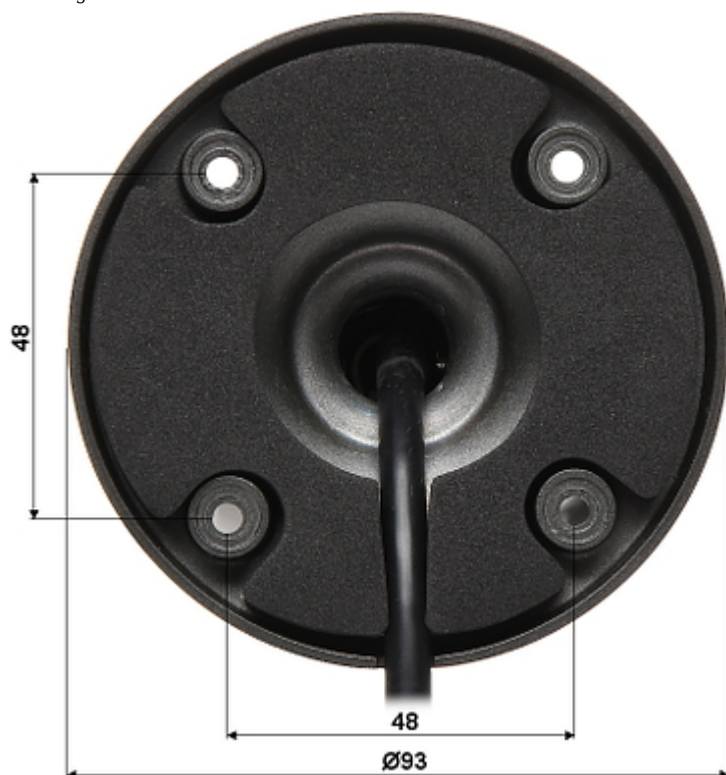
At the bottom of the camera has an openable cover under which is hidden IR illuminator adjustment and extra video output:



If you need to make an adjustment and open the cover, please follow the steps in the following order:

- 1 - loosen the Phillips screws (hinge),
- 2 - unscrew the Allen screws (cover),
- 3 - open the cover, make the adjustment and close the cover,
- 4 - screw the Allen screws (cover),
- 5 - tighten the Phillips screws (hinge).

This ensures the correct sealing pressure and tightness of the camera.
Mounting dimensions:



In the kit:



Package:



OUR TESTS

Camera image at artificial illumination (about 30Lux):

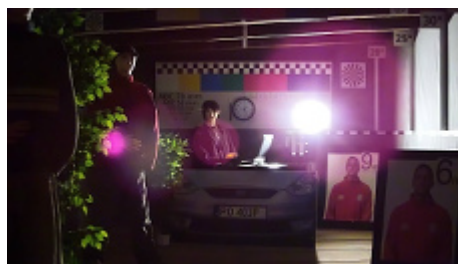
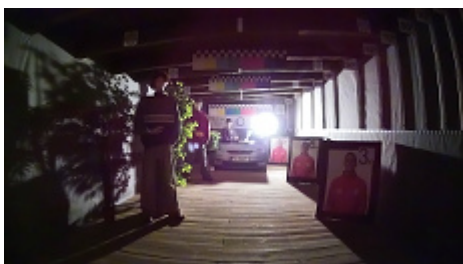
DELTA-OPTI Monika Matysiak; <https://www.delta.poznan.pl>
POL; 60-713 Poznań; Graniczna 10
e-mail: delta-opti@delta.poznan.pl; tel: +(48) 61 864 69 60



Camera image at night conditions with internal built-in IR illuminator on:



Camera image at direct strong light opposite to camera:



PACKAGE

Dimensions (L x W x H): 0x0x0 mm	Gross Weight: 0 kg
----------------------------------	--------------------

