

Code: APTI-13C4-2812W

IP CAMERA **APTI-13C4-2812W** - 1.3 Mpx 2.8 ... 12 mm

Net: **67.07 EUR** Gross: **67.07 EUR**

IP camera with efficient H.264 image compression algorithm for clear and smooth video streaming at max. resolution of 1280 x 960. Very easy operation by Internet Explorer browser allows the users to convenient and remote support, and also remote management of the camera. Included camera software enables management and integrated monitoring of many network cameras. Its using allows to create large surveillance system.

ICR - The movable IR filter allows to perfect colors reproduction in daylight and wide gray-scale with high sharpness of the image at night mode.



SPECIFICATION

Standard:	TCP/IP
Digital Image Processor:	Hisilicon 3518E V200
Sensor:	1/3 " Sony CMOS IMX225
Matrix size:	1.3 Mpx
Resolution:	1280 x 960 - 1.3 Mpx 1280 x 720 - 720p
Lens:	2.8 ... 12 mm - 2.0 Mpx
View angle:	81 ° ... 30 °
Range of IR illumination:	40 m
IR illuminator power adjustment:	—
Image compression method:	H.264 / MJPEG
Bitrate:	64 ... 12000 kbps
Main stream frame rate:	max. 25 fps @ 1.3 Mpx / 720p
Network interface:	10/100 Base-T (RJ-45)
Alarm inputs / outputs:	—
Network protocols:	RTSP, PPPOE, DHCP, DDNS, NTP, UPnP
Audio:	—
WEB Server:	Built-in - port 80
Max. number of on-line users:	10
ONVIF:	2.0 - port 8999
RS-485 interface:	—

DELTA-OPTI Monika Matysiak; <https://www.delta.poznan.pl>
POL; 60-713 Poznań; Graniczna 10
e-mail: delta-opti@delta.poznan.pl; tel: +(48) 61 864 69 60

Mobile phones support:	Port no.: 80 or access by a cloud (P2P) <ul style="list-style-type: none"> • Android: Free application FREEIP • iOS (iPhone): Free application FREEIP
Default admin user / password:	admin / admin
Default IP address:	192.168.1.168
Web browser access ports:	80
PC client access ports:	80
Mobile client access ports:	80
Port ONVIF:	8999
RTSP URL:	rtsp://user:password@ip_address:80/0 - Main stream rtsp://user:password@ip_address:80/1 - Sub stream rtsp://user:password@ip_address:80/2 - Sub stream 2
Main features:	<ul style="list-style-type: none"> • ICR - Movable InfraRed filter • Day/Night mode - configurable • 2D-DNR, 3D-DNR - Digital Noise Reduction • F-DNR (Defog) - Reduction of image noise caused by precipitation • WDR - Wide Dynamic Range • BLC - Back Light Compensation • Possibility to change the resolution, quality and bit rate • Motion Detection • Privacy zones • White Balance - ATW/Manual • Configurable: brightness, contrast, saturation • Sharpness - sharper image outlines • AGC - Automatic Gain Control
Power supply:	12 V DC / 720 mA
Housing:	Compact, Metal
Color:	White
"Index of Protection":	IP66
Operation temp:	-20 °C ... 55 °C
Weight:	0.63 kg
Dimensions:	90 x 80 x 270 mm
Supported languages:	English, Arabic, Bulgarian, Chinese Traditional, Chinese Simplified, Czech, French, Hebrew, Spanish, Dutch, Japanese, Korean, German, Polish, Portuguese, Russian, Turkish, Italian
Manufacturer / Brand:	APTI
Guarantee:	2 years

PRESENTATION



DELTA-OPTI Monika Matysiak; <https://www.delta.poznan.pl>
POL; 60-713 Poznań; Graniczna 10
e-mail: delta-opti@delta.poznan.pl; tel: +(48) 61 864 69 60



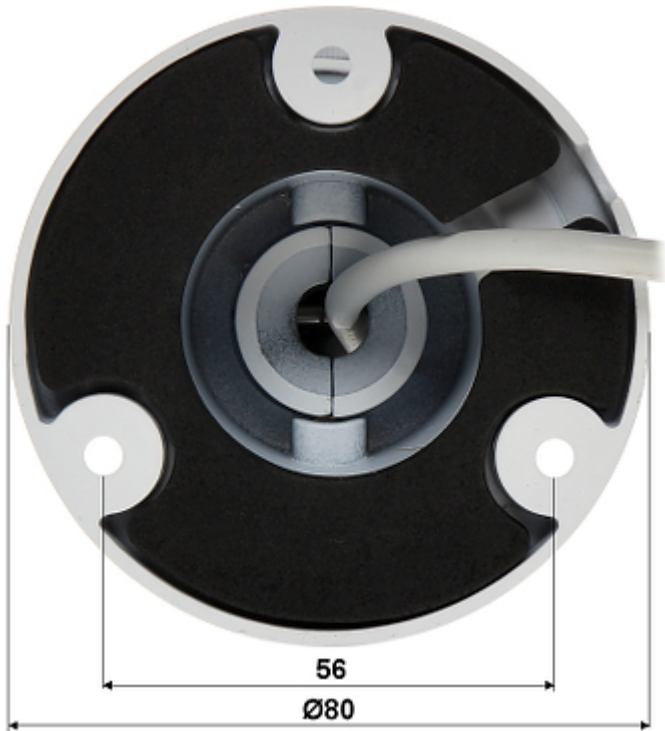
Side view:



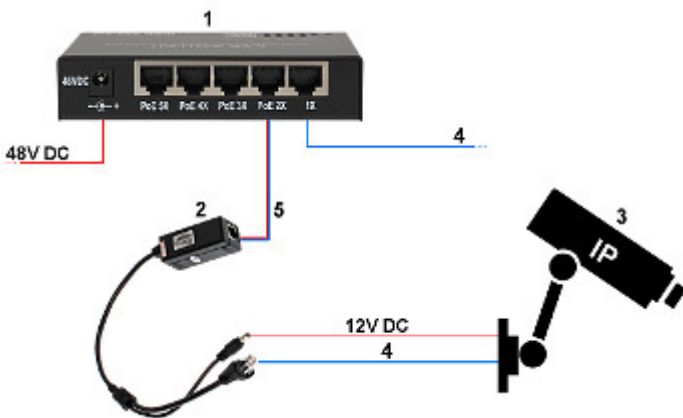
Bottom view:



Bracket dimensions:



See how you can power the camera in PoE standard:



- 1. SWITCH PoE
 - 2. POE-802.3AF/C
 - 3. IP Camera
 - 4. Ethernet
 - 5. Ethernet + PoE
- In the kit:



Configuration and operation of the FreeIP cloud:

:

OUR TESTS

Camera image at artificial illumination (about 30Lux):



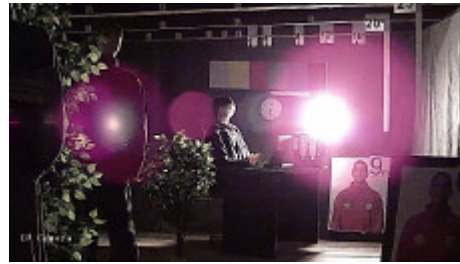
DELTA-OPTI Monika Matysiak; <https://www.delta.poznan.pl>
 POL; 60-713 Poznań; Graniczna 10
 e-mail: delta-opti@delta.poznan.pl; tel: +(48) 61 864 69 60



Camera image at night conditions with internal built-in IR illuminator on:



Camera image at direct strong light opposite to camera:



Record from camera during daylight operation:

:

Record from camera during night conditions operation:

:

Records from APTI-13C4-2812W and BCS-TIP4200AIR cameras with using too weak IR illuminator:

: :

Records from APTI-13C4-2812W and BCS-TIP4200AIR cameras with using built-in IR illuminator:

: :

PACKAGE

Dimensions (L x W x H): 0x0x0 mm	Gross Weight: 0 kg
----------------------------------	--------------------