

Code: DH-IPC-HFW8331EP-ZH

IP VANDALPROOF CAMERA **DH-IPC-HFW8331EP-ZH** - 3.0 Mpx 2.7 ... 13.5 mm - MOTOZOOM DAHUA

Net: **553.25 EUR** Gross: **553.25 EUR**

IP camera with efficient H.264/H.265/MJPEG image compression algorithm for clear and smooth video streaming at maximal resolution of 2048 x 1536 (3.0 MPx). Due to above it is perfect solution for surveillance systems requiring persons or vehicles recognition. The used motozoom lens with 2.7 ... 13.5 mm focal length allows to remote view angle adjustment. PoE powering possibility, compatible with the 802.3at standard makes the device more universal and easier to install.



SPECIFICATION

Standard:	TCP/IP
Sensor:	1/2.8 " STARVIS™ CMOS
Matrix size:	3.0 Mpx
Resolution:	2048 x 1536 - 3.0 Mpx , 1920 x 1080 - 1080p 1280 x 960 - 1.3 Mpx 1280 x 720 - 720p
Lens:	2.7 ... 13.5 mm - Motozoom
View angle:	• 101 ° ... 31 ° (manufacturer data) • 93 ° ... 28 ° (our tests result)
Compression:	H.265 / H.264 / MJPEG
S/N ratio:	> 50 dB (AGC off)
Range of IR illumination:	50 m
Alarm inputs / outputs:	2 / 1
Bitrate:	• 24 kb/s ... 10240 kb/s - H.264 • 14 kb/s ... 9216 kb/s - H.265
Main stream frame rate:	50 fps @ 3.0 Mpx
Network interface:	10/100 Base-T (RJ-45)
Audio:	• External microphone input • Audio output • Bi-directional audio streaming support • Audio detection
Memory card slot:	Micro SD memory cards up to 128GB support (possible local recording)
Network protocols:	HTTP, HTTPS, TCP, ARP, RTSP, RTP, UDP, SMTP, FTP, DHCP, DNS, DDNS, PPPoE, IPv4/IPv6, QoS, UPnP, NTP, Bonjour, IEEE 802.1x, Multicast, ICMP, IGMP, SNMP

DELTA-OPTI Monika Matysiak; <https://www.delta.poznan.pl>
POL; 60-713 Poznań; Graniczna 10
e-mail: delta-opti@delta.poznan.pl; tel: +(48) 61 864 69 60

Default IP address:	192.168.1.108
Web browser access ports:	80, 37777
Default admin user / password:	admin / admin
PC client access ports:	37777
Mobile client access ports:	37777
WEB Server:	Built-in, NVR compliance
Max. number of on-line users:	20
Port ONVIF:	80
RTSP URL:	rtsp://admin:haslo@192.168.1.108:554/cam/realmonitor?channel=1&subtype=0 - Main stream rtsp://admin:haslo@192.168.1.108:554/cam/realmonitor?channel=1&subtype=1 - Sub stream
ONVIF:	16.12
Mobile phones support:	Port no.: 37777 or access by a cloud (P2P) • Android: Free application DMSS , Android: Free application IMOU • iOS (iPhone): Free application DMSS , iOS (iPhone): Free application IMOU
RS-485 interface:	—
Main features:	<ul style="list-style-type: none"> • U-WDR - 140 dB - Wide Dynamic Range • 3D-DNR - Digital Noise Reduction • F-DNR (Defog) - Reduction of image noise caused by precipitation • ROI - improve the quality of selected parts of image • EIS - Electronic Image Stabilization • ICR - Movable InfraRed filter • WB - White Balance (ATW/AWB/manual/indoor/outdoor) • BLC - configurable Back Light Compensation • HLC - High Light Compensation (spot) • Motion Detection • Audio detection • Configurable Privacy Zones • Mirror - Mirror image • Sharpness - sharper image outlines • Heat map - the selection in the image by corresponding colors the areas with different traffic • IVS analysis : crossing the line (tripwire), intrusion, abandoned/missing object, face detection, people counting • D-ZOOM - Digital Zoom
Power supply:	<ul style="list-style-type: none"> • PoE (802.3at), • 12 V DC / 1830 mA
Power consumption:	≤ 22 W
Housing:	Compact, Metal / Plastic
"Index of Protection":	IP67
Vandal-proof:	IK10
Color:	White / Black
Operation temp:	-40 °C ... 60 °C
Supported languages:	English, Polish
Manufacturer / Brand:	DAHUA
Weight:	1.17 kg
Dimensions:	273 x 95 x 96 mm
Guarantee:	3 years

PRESENTATION



DELTA-OPTI Monika Matysiak; <https://www.delta.poznan.pl>
POL; 60-713 Poznań; Graniczna 10
e-mail: delta-opti@delta.poznan.pl; tel: +(48) 61 864 69 60



Side view:



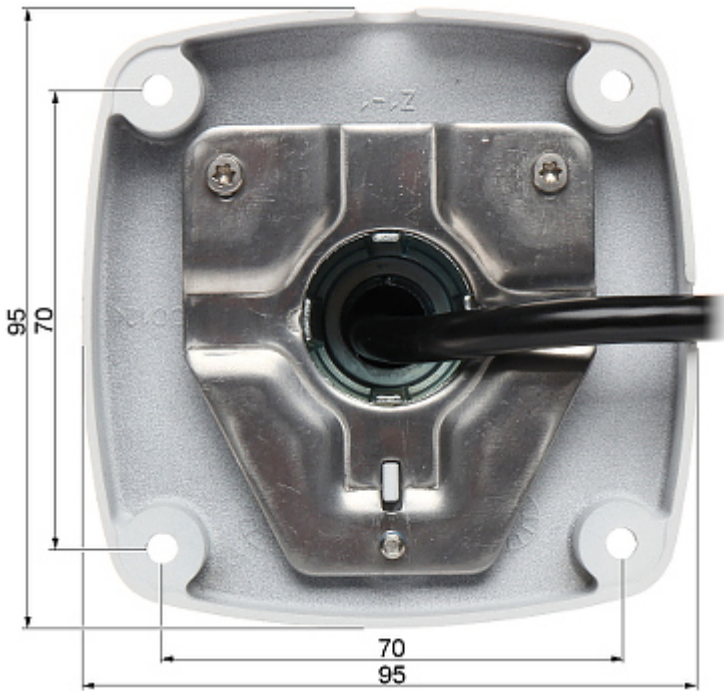
Bottom view:



Bottom view (after remove the cover):



Camera mounting side view:



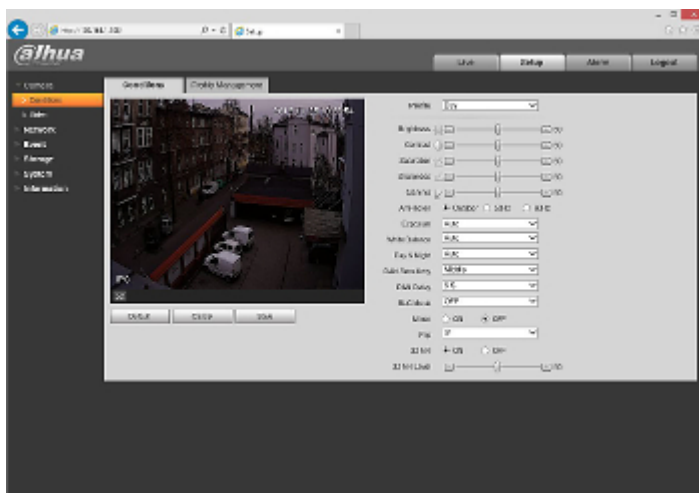
Connectors description:



In the kit:



Example captures of device interface:



See the ability of operation in imou cloud:

:

OUR TESTS

Camera image at artificial illumination (about 30Lux):



Camera image at night conditions with internal built-in IR illuminator on:



Camera image at direct strong light opposite to camera:



OUR OPINIONS



- Motozoom lens.

PACKAGE

Dimensions (L x W x H): 0x0x0 mm	Gross Weight: 0 kg
----------------------------------	--------------------