

Code: DH-IPC-HFW2320RP-ZS

IP CAMERA **DH-IPC-HFW2320RP-ZS** - 3.0 Mpx 2.7 ... 12 mm - MOTOZOOM DAHUA

Net: **196.98 EUR** Gross: **196.98 EUR**

IP camera with efficient H.264 image compression algorithm for clear and smooth video streaming at maximal resolution of 2304 x 1296 (3.0 MPx). Due to above it is perfect solution for surveillance systems requiring persons or vehicles recognition. The used motozoom lens with 2.7 ... 12 mm focal length allows to remote view angle adjustment.

Very easy operation by Internet Explorer browser allows the users to convenient and remote support, and also remote management of the camera. Included camera software enables management and integrated monitoring of many network cameras.



SPECIFICATION

Standard:	TCP/IP
Sensor:	1/3 " Progressive Scan CMOS
Matrix size:	3.0 Mpx
Resolution:	2304 x 1296 - 3.0 Mpx , 1920 x 1080 - 1080p , 1280 x 1024 - 1.4 Mpx 1280 x 960 - 1.3 Mpx 1280 x 720 - 720p
Lens:	2.7 ... 12 mm - Motozoom
View angle:	• 92 ° ... 28 ° (manufacturer data) • 86 ° ... 30 ° (our tests result)
Range of IR illumination:	30 m
S/N ratio:	> 50 dB (AGC off)
Compression:	H.264 / MJPEG
Bitrate:	40 ... 8192 kbps - H.264 40 ... 16384 kbps - MJPEG
Main stream frame rate:	• 20 fps - 3.0 Mpx • 25 fps - 1080p
Network interface:	10/100 Base-T (RJ-45)
Network protocols:	IPv4/IPv6, HTTP, HTTPS, SSL, TCP/IP, UDP, UPnP, ICMP, IGMP, SNMP, RTSP, RTP, SMTP, NTP, DHCP, DNS, PPPOE, DDNS, FTP, IP Filter, QoS, Bonjour
WEB Server:	Built-in, NVR compliance
Max. number of on-line users:	20

DELTA-OPTI Monika Matysiak; <https://www.delta.poznan.pl>
POL; 60-713 Poznań; Graniczna 10
e-mail: delta-opti@delta.poznan.pl; tel: +(48) 61 864 69 60

ONVIF:	2.42
Alarm inputs / outputs:	—
Audio:	—
RS-485 interface:	—
Mobile phones support:	Port no.: 37777 or access by a cloud (P2P) <ul style="list-style-type: none"> • Android: Free application DMSS • iOS (iPhone): Free application DMSS There are also paid versions of mobile applications: gDMSS Plus, iDMSS Plus, wDMSS plus
Power supply:	<ul style="list-style-type: none"> • PoE (802.3af), • 12 V DC / 710 mA
Power consumption:	max. 8.5 W
Memory card slot:	Micro SD memory cards up to 128GB support (possible local recording)
Main features:	<ul style="list-style-type: none"> • Motozoom lens - Controlling from browser, NVR or software • ICR - Movable InfraRed filter • 3D-DNR - Digital Noise Reduction • WDR - Wide Dynamic Range • BLC - configurable Back Light Compensation • HLC - High Light Compensation (spot) • Motion Detection • Day/Night mode (color/b&w/auto) • Configurable Privacy Zones
Housing:	Compact, Metal
Color:	White
"Index of Protection":	IP67
Operation temp:	-30 °C ... 50 °C
Weight:	0.670 kg
Dimensions:	213 x 72 x 80 mm
Supported languages:	English, Polish
Manufacturer / Brand:	DAHUA
Guarantee:	3 years

PRESENTATION



DELTA-OPTI Monika Matysiak; <https://www.delta.poznan.pl>
 POL; 60-713 Poznań; Graniczna 10
 e-mail: delta-opti@delta.poznan.pl; tel: +(48) 61 864 69 60



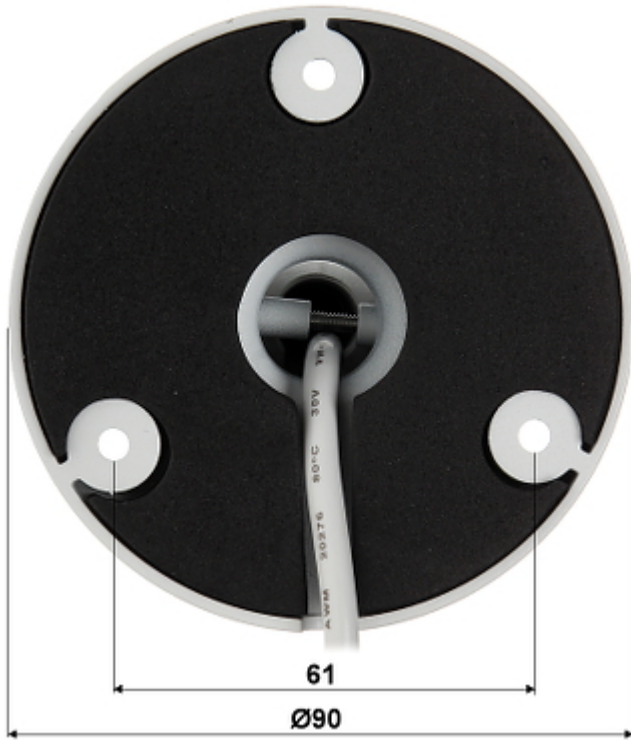
Side view:



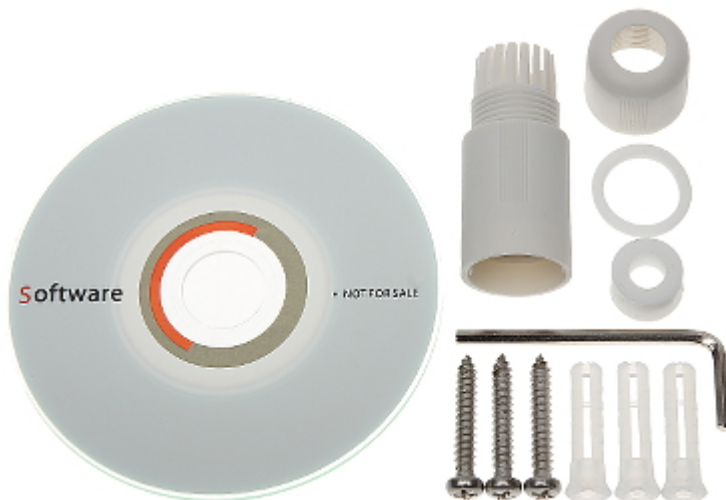
Bottom view:



Camera mounting side view:

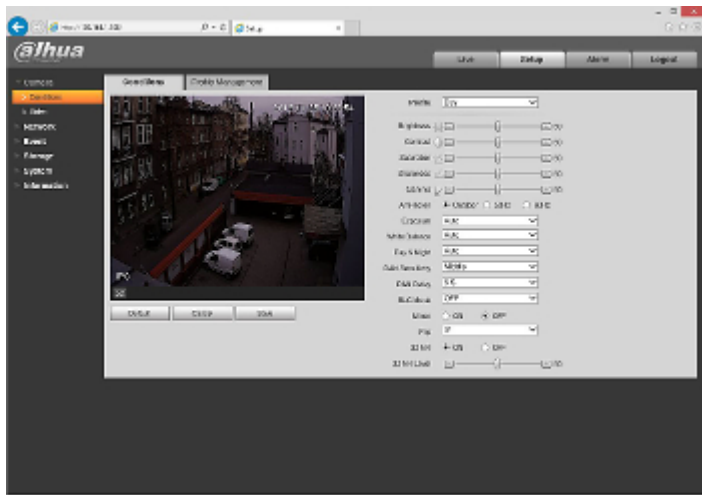


In the kit:



Example captures of device interface:





OUR TESTS

Camera image at artificial illumination (about 30Lux):



Camera image at night conditions with internal built-in IR illuminator on:



Camera image at direct strong light opposite to camera:



Record from camera during daylight operation:

:

OUR OPINIONS



DELTA-OPTI Monika Matysiak; <https://www.delta.poznan.pl>
 POL; 60-713 Poznań; Graniczna 10
 e-mail: delta-opti@delta.poznan.pl; tel: +(48) 61 864 69 60

- Motozoom lens.

PACKAGE

Dimensions (L x W x H): 0x0x0 mm	Gross Weight: 0 kg
----------------------------------	--------------------

