

Code: DH-HAC-HFW2231RP-Z-

AHD, HD-CVI, HD-TVI, PAL CAMERA **DH-HAC-HFW2231RP-Z-** IRE6-27135 - 1080p 2.7 ... 13.5 mm - MOTOZOOM DAHUA

Net: **148.50 EUR** Gross: **148.50 EUR**

Megapixel camera with 1/2.8" CMOS sensor and AHD / HD-CVI / HD-TVI / PAL.

Thanks to the "Starlight" technology used, the camera only needs very low lighting to obtain a clear color image.

The AHD / HD-CVI / HD-TVI interface allows to transmission of analog video signal via coaxial cable in 1080p resolution. It enables the transmission of HD resolution images for even 500 m distance with keeping the low costs of the installation. During transmission there are no delays and is maintained the original, high quality image.

Camera is according to IP67 Index of Protection norm.

Attention! The camera default setting is HD-CVI standard. To change the camera standard you need use the PFM820 controller, available separately.



SPECIFICATION

Standard:	AHD, HD-CVI, HD-TVI, PAL
Sensor:	1/2.8 " Progressive Scan CMOS
Matrix size:	2.1 Mpx
Resolution:	1920 x 1080 - 1080p , 1280 x 720 - 720p , 960 x 576 - 960H, PAL
IR illuminator support:	ICR - Movable InfraRed filter
Video output:	AHD, HD-CVI, HD-TVI, PAL - 1 Vpp / 75 Ω To change the standard, in which the camera is operating, the PFM820 controller is required
OSD menu:	OSD menu available via recorder
Lens:	2.7 ... 13.5 mm - Motozoom
View angle:	<ul style="list-style-type: none">• 102 ° ... 29 ° (manufacturer data)• 101 ° ... 28 ° (our tests result)
S/N ratio:	> 65 dB
Range of IR illumination:	60 m
IR illuminator power adjustment:	Automatic

Main features:	<ul style="list-style-type: none"> • Motozoom lens • WDR - 120 dB - Wide Dynamic Range • Sense-UP - (Slow Shutter) - Increase the sensor sensitivity • F-DNR (Defog) - Reduction of image noise caused by precipitation • 2D-DNR, 3D-DNR - Digital Noise Reduction • BLC - Back Light Compensation • HLC - High Light Compensation (spot) • ICR - Movable InfraRed filter • AGC - Automatic Gain Control • Auto White Balance • Privacy zones • Motion Detection • Mirror - Mirror image • Sharpness - sharper image outlines
Power supply:	12 V DC / 840 mA
Power consumption:	≤ 10.1 W
Housing:	Compact, Aluminum
Color:	White
"Index of Protection":	IP67
Operation temp:	-40 °C ... 60 °C
Weight:	0.59 kg
Dimensions:	213 x 90 x 90 mm
Manufacturer / Brand:	DAHUA
Guarantee:	3 years

PRESENTATION

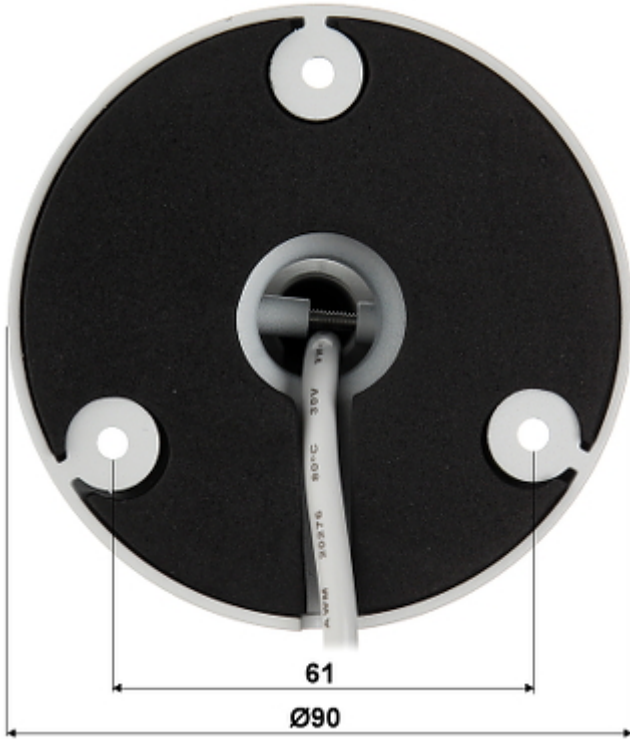
Front view:



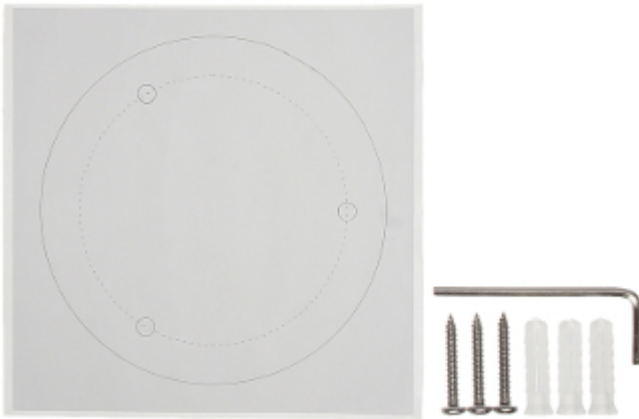
Side view:



Mounting side view:



In the kit:



OUR TESTS

AHD:

Camera image at artificial illumination (about 30Lux):

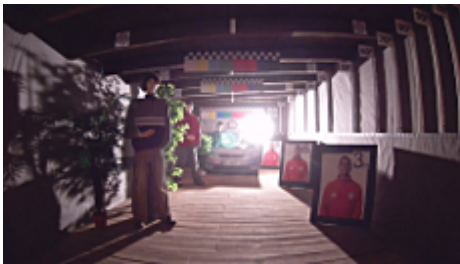




Camera image at night conditions with internal built-in IR illuminator on:



Camera image at direct strong light opposite to camera:



HD-CVI:

Camera image at artificial illumination (about 30Lux):



Camera image at night conditions with internal built-in IR illuminator on:



Camera image at direct strong light opposite to camera:



HD-TVI:

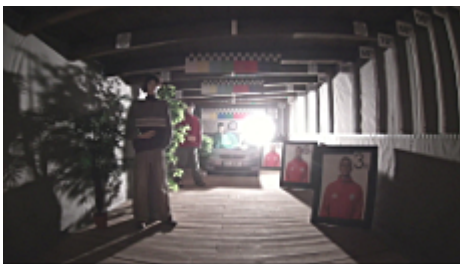
Camera image at artificial illumination (about 30Lux):



Camera image at night conditions with internal built-in IR illuminator on:



Camera image at direct strong light opposite to camera:



PACKAGE

Dimensions (L x W x H): 0x0x0 mm	Gross Weight: 0 kg
----------------------------------	--------------------