

Code: BCS-TQE6500IR3-B

AHD, HD-CVI, HD-TVI, PAL CAMERA **BCS-TQE6500IR3-B** - 5 Mpx, 3.3 ... 12 mm

Net: **81.27 EUR** Gross: **81.27 EUR**

Megapixel camera with 1/2.5" CMOS sensor and AHD / HD-CVI / HD-TVI / PAL.

The AHD / HD-CVI / HD-TVI interface allows to transmission of analog video signal via coaxial cable in max. 8 Mpx (4K) resolution. During transmission there are no delays and is maintained the original, high quality image.

In the case of video transmission using a twisted pair cable and matching transformers (balun), be aware of the possibility of signal reflections and interfering signals.

The range of IR illumination according to the manufacturer data, depends on outer conditions (visibility - air transparency, environment, wall colors ie. scene reflectance). Camera is according to IP66 Index of Protection norm.



SPECIFICATION

Standard:	AHD, HD-CVI, HD-TVI, CVBS
Sensor:	1/2.5 " CMOS
Matrix size:	5.2 Mpx
Resolution:	2704 x 1950 - 5 Mpx , 2560 x 1440 - 3.7 Mpx , 1920 x 1080 - 1080p 960 x 576 - 960H
Lens:	3.3 ... 12 mm
View angle:	• 90 ° ... 32 ° (manufacturer data) • 92 ° ... 35 ° (our tests result)
Range of IR illumination:	50 m
IR illuminator power adjustment:	Automatic
Video output:	AHD / HD-CVI / HD-TVI / CVBS, 1 Vpp / 75 Ω
Audio:	—
OSD menu:	✓
Main features:	• D-WDR - Wide Dynamic Range • DNR - Digital Noise Reduction • ICR - Movable InfraRed filter • AGC - Automatic Gain Control • BLC - Back Light Compensation • Sharpness - sharper image outlines • Auto White Balance
Power supply:	12 V DC / 560 mA

DELTA-OPTI Monika Matysiak; <https://www.delta.poznan.pl>
POL; 60-713 Poznań; Graniczna 10
e-mail: delta-opti@delta.poznan.pl; tel: +(48) 61 864 69 60

Power consumption:	≤ 6.8 W
Housing:	Compact, Metal
Color:	White
"Index of Protection":	IP66
Operation temp:	-20 °C ... 60 °C
Weight:	0.84 kg
Dimensions:	Ø 78 x 274 mm
Manufacturer / Brand:	BCS
Guarantee:	3 years

PRESENTATION

Front view:

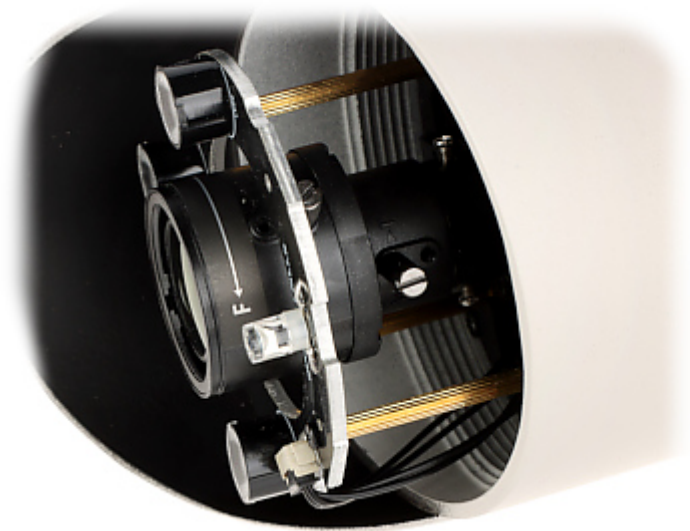


Side view:



Camera view after remove the Dome cover - camera lens adjustment knobs are visible:





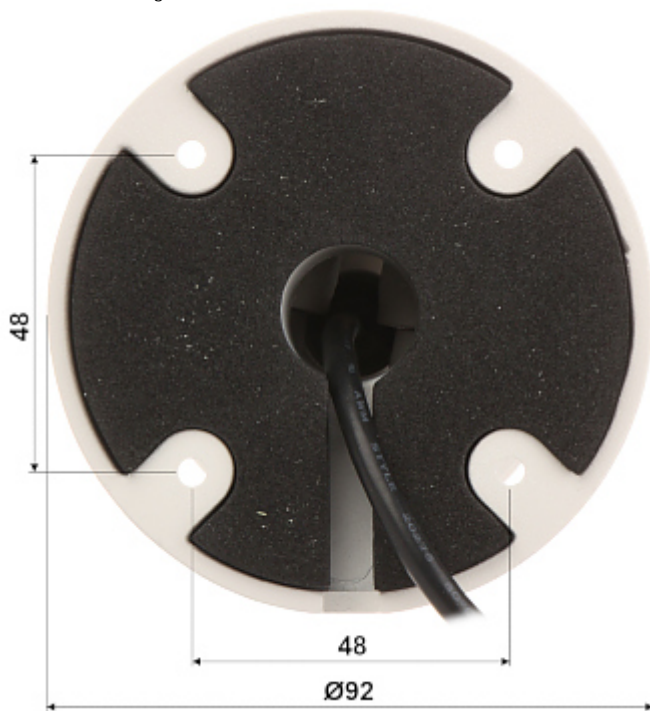
Connectors:



Standard changes are made using configuration switches:



Camera mounting side view:



In the kit:



OUR TESTS

AHD:

Camera image at artificial illumination (about 30Lux):



Camera image at night conditions with internal built-in IR illuminator on:



Camera image at direct strong light opposite to camera:



HD-CVI:

DELTA-OPTI Monika Matysiak; <https://www.delta.poznan.pl>
POL; 60-713 Poznań; Graniczna 10
e-mail: delta-opti@delta.poznan.pl; tel: +(48) 61 864 69 60

Camera image at artificial illumination (about 30Lux):



Camera image at night conditions with internal built-in IR illuminator on:



Camera image at direct strong light opposite to camera:



HD-TVI:

Camera image at artificial illumination (about 30Lux):



Camera image at night conditions with internal built-in IR illuminator on:



Camera image at direct strong light opposite to camera:



PACKAGE

Dimensions (L x W x H): 0x0x0 mm	Gross Weight: 0 kg
----------------------------------	--------------------

