

Code: DS-2CE19U8T-AIT3Z(2.8-12MM)

HD-TVI, PAL CAMERA **DS-2CE19U8T-AIT3Z(2.8-12MM)** - 8.3 Mpx, 4K UHD

Hikvision

Net: 1 547.00 PLN Gross: 1 547.00 PLN

Megapixel camera with Progressive Scan CMOS sensor and HD-TVI (High Definition Transport Video Interface). The HD-TVI interface allows to transmission of analog video signal via coaxial cable at resolutions up to 8 Mpx (4K). It enables the transmission of HD resolution images for even 500 m distance with keeping the low costs of the installation. During transmission there are no delays and is maintained the original, high quality image. The used motozoom lens with 2.8 ... 12 mm focal length allows to remote view angle adjustment. The 3-Axis integrated camera bracket has a regulation in all three planes, which allows to turn the camera to any direction. Camera is according to IP67 Index of Protection norm.



SPECIFICATION

Standard:	HD-TVI, PAL
Sensor:	Progressive Scan CMOS
Matrix size:	8.3 Mpx
Resolution:	3840 x 2160 - 8.3 Mpx, 4K UHD , 2592 x 1944 - 5 Mpx , 2560 x 1440 - 4 Mpx , 1920 x 1080 - 1080p
Range of IR illumination:	80 m
IR illuminator power adjustment:	Automatic
Lens:	2.8 ... 12 mm - Motozoom
View angle:	<ul style="list-style-type: none">• 108 ° ... 46 ° (manufacturer data)• 106 ° ... 46 ° (our tests result)
Video output:	<ul style="list-style-type: none">• 1 Vpp / 75 Ω - HD-TVI, BNC socket• 1 Vpp / 75 Ω - CVBS, BNC socket
Main features:	<ul style="list-style-type: none">• Motozoom lens - The ability to control via coaxial cable from recorder HIKVISION• WDR - 120 dB - Wide Dynamic Range• F-DNR (Defog) - Reduction of image noise caused by precipitation• EXIR - high-efficiency infrared LEDs technology, which evenly covers the whole plan of both central vantage points of the scene as well as the corners• 3D-DNR - Digital Noise Reduction• BLC - Back Light Compensation• ICR - Movable InfraRed filter• Mirror - Mirror image• AGC - Automatic Gain Control• Auto White Balance• Sharpness - sharper image outlines
OSD menu:	The ability to control via coaxial cable from recorder HIKVISION or via control panel at the bottom of the camera

DELTA-OPTI Monika Matysiak; <https://www.delta.poznan.pl>
POL; 60-713 Poznań; Graniczna 10
e-mail: delta-opti@delta.poznan.pl; tel: +(48) 61 864 69 60

Power supply:	<ul style="list-style-type: none"> • 12 V DC / 1.2 A, • 24 V AC / 930 mA
Power consumption:	≤ 14.5 W
Housing:	Compact, Metal
Color:	White / Black
"Index of Protection":	IP67
Operation temp:	-40 °C ... 60 °C
Weight:	0.97 kg
Dimensions:	270 x 92 x 85 mm
Supported languages:	English
Manufacturer / Brand:	Hikvision
SAP Code:	300509241
Country of origin:	China
Guarantee:	3 years

PRESENTATION



Side view:



Bottom view (control panel):





Mounting side view:



In the kit:



OUR TESTS

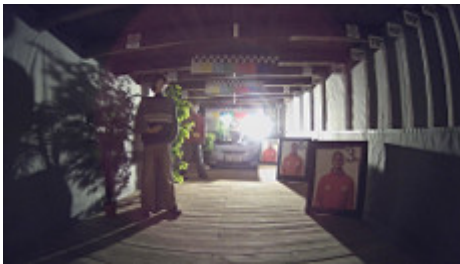
Camera image at artificial illumination (about 30Lux):



Camera image at night conditions with internal built-in IR illuminator on:



Camera image at direct strong light opposite to camera:



PACKAGE

Dimensions (L x W x H): 0x0x0 mm	Gross Weight: 0 kg
----------------------------------	--------------------

