

Code: DS-2CE16D9T-AIRAZH(5-50mm)

HD-TVI CAMERA **DS-2CE16D9T-AIRAZH(5-50mm)** - 1080p Hikvision

Net: **273.57 EUR** Gross: **273.57 EUR**

Megapixel camera with Progressive Scan CMOS sensor and HD-TVI (High Definition Transport Video Interface).

The HD-TVI interface allows to transmission of analog video signal via coaxial cable at resolutions up to 1080p. It enables the transmission of HD resolution images for even 500 m distance with keeping the low costs of the installation. During transmission there are no delays and is maintained the original, high quality image.

The used motozoom lens with 5 ... 50 mm focal length allows to remote view angle adjustment. The 3-Axis integrated camera bracket has a regulation in all three planes, which allows to turn the camera to any direction. Camera is according to IP66 Index of Protection norm.



SPECIFICATION

Standard:	HD-TVI, CVBS
Sensor:	Progressive Scan CMOS
Matrix size:	2.1 Mpx
Resolution:	1920 x 1080 - 1080p
Range of IR illumination:	110 m
IR illuminator power adjustment:	Automatic
Lens:	5 ... 50 mm - Motozoom
View angle:	<ul style="list-style-type: none">• 60 ° ... 6.2 ° (manufacturer data)• 50 ° ... 6.4 ° (our tests result)
S/N ratio:	> 62 dB
Video output:	<ul style="list-style-type: none">• 1 Vpp / 75 Ω - HD-TVI, BNC socket• 1 Vpp / 75 Ω - CVBS, BNC socket
Main features:	<ul style="list-style-type: none">• Motozoom lens - The ability to control via coaxial cable from recorder HIKVISION• WDR - 120 dB - Wide Dynamic Range• 2D-DNR, 3D-DNR - Digital Noise Reduction• Sense-UP - (Slow Shutter) - Increase the sensor sensitivity• F-DNR (Defog) - Reduction of image noise caused by precipitation• EXIR - high-efficiency infrared LEDs technology, which evenly covers the whole plan of both central vantage points of the scene as well as the corners• D-ZOOM - Digital Zoom• ICR - Movable InfraRed filter• HSBLC - High Light Compensation (spot)• BLC - configurable Back Light Compensation• Privacy zones - max. 8• Motion Detection - max. 4 zones• Flicker Control - The technology eliminates the tiring eyes flickering image effect• Mirror - Mirror image• AGC - Automatic Gain Control• Auto White Balance• Sharpness - sharper image outlines• The device has a built-in heater - Power supply : 24V AC only



DELTA-OPTI Monika Matysiak; <https://www.delta.poznan.pl>
POL; 60-713 Poznań; Graniczna 10
e-mail: delta-opti@delta.poznan.pl; tel: +(48) 61 864 69 60

OSD menu:	The ability to control via coaxial cable from recorder HIKVISION or via control panel at the bottom of the camera
Power supply:	<ul style="list-style-type: none"> • 12 V DC / 920 mA, • 24 V AC / 840 mA
Power consumption:	<ul style="list-style-type: none"> ≤ 11 W @ 12 V DC ≤ 20 W @ 24 V AC
Housing:	Compact, Metal
Color:	White / Black
"Index of Protection":	IP66
Operation temp:	-40 °C ... 60 °C
Weight:	1.32 kg
Dimensions:	314 x 101 x 107 mm
Supported languages:	English
Manufacturer / Brand:	Hikvision
SAP Code:	300505201
Country of origin:	China
Guarantee:	3 years

PRESENTATION



Side view:



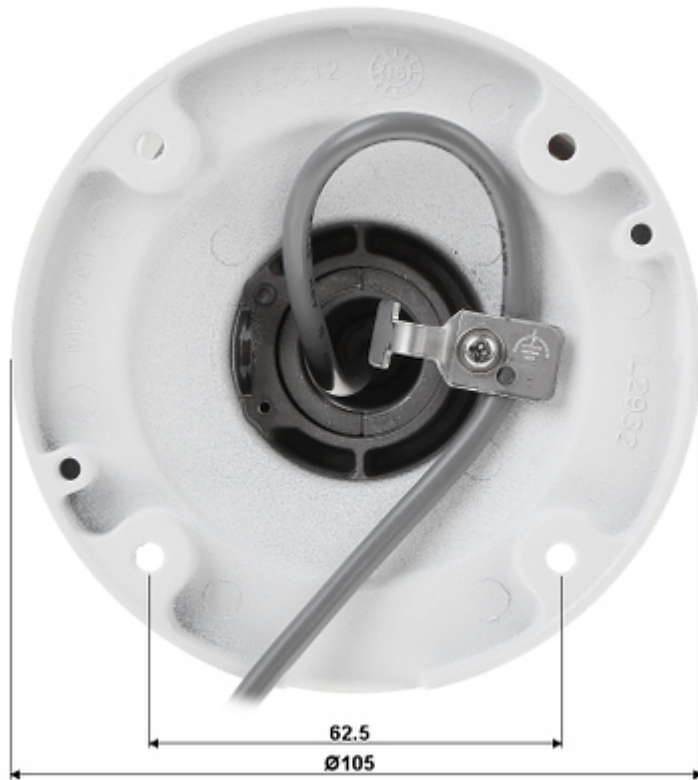
Bottom view:



Bottom view (control panel):



Camera mounting side view:



In the kit:



OUR TESTS

Camera image at artificial illumination (about 30Lux):

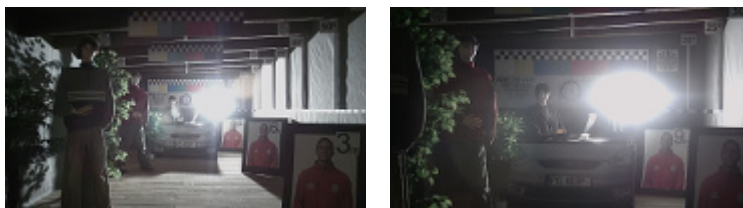


Camera image at night conditions with internal built-in IR illuminator on:



DELTA-OPTI Monika Matysiak; <https://www.delta.poznan.pl>
 POL; 60-713 Poznań; Graniczna 10
 e-mail: delta-opti@delta.poznan.pl; tel: +(48) 61 864 69 60

Camera image at direct strong light opposite to camera:



PACKAGE

Dimensions (L x W x H): 0x0x0 mm	Gross Weight: 0 kg
----------------------------------	--------------------



DELTA-OPTI Monika Matysiak; <https://www.delta.poznan.pl>
POL; 60-713 Poznań; Graniczna 10
e-mail: delta-opti@delta.poznan.pl; tel: +(48) 61 864 69 60