

Code: LE-137377

FLUSH-MOUNTING DISTRIBUTION CABINET 36-MODULAR LE-137377

Practibox S LEGRAND

Net: 186.69 PLN Gross: 186.69 PLN



2-row 36-modular flush-mounting distribution electric cabinet.

SPECIFICATION

Method of mounting:	Flush-mounted
Number of mounted modules:	18 x 2 rows, 17.5 mm
Spacing between TH 35 rails:	150 mm
Transparent door:	✓
Main features:	<ul style="list-style-type: none">• Removable chassis with TH 35 rails• Reversible door• Removable faceplates for each row of cabinet• Rated voltage : 400 V AC, 50 / 60 Hz• Max. current : 125 A• Short-circuit current : 10 kA• Equipped with terminal blocks
Equipment:	Terminal blocks : <ul style="list-style-type: none">• 2 pcs : 1 x 25 mm² + 12 x 16 mm²• 1 pcs 1 x 25 mm² + 26 x 16 mm²
Material:	Self-extinguishing
Color:	White
"Index of Protection":	IP40
IK rating:	IK07
Compliance with standards:	IEC/EN 60670-24, IEC/EN 61439-3
Operation temp:	-10 °C ... 60 °C
Weight:	1.88 kg

DELTA-OPTI Monika Matysiak; <https://www.delta.poznan.pl>
POL; 60-713 Poznań; Graniczna 10
e-mail: delta-opti@delta.poznan.pl; tel: +(48) 61 864 69 60

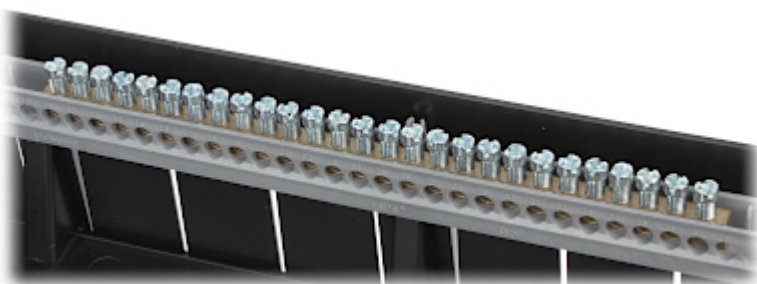
Dimensions:	436 x 385 x 105 mm , 420 x 370 x 85 mm - flush-mounting box
Manufacturer / Brand:	LEGRAND
Guarantee:	2 years

PRESENTATION

Front view:



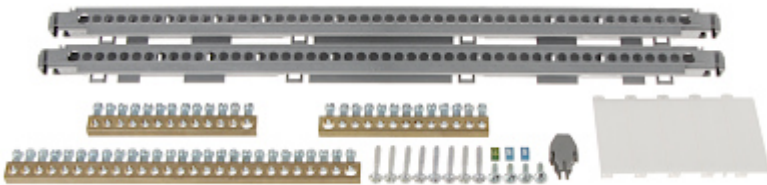
Internal view of the housing:



Mounting side view:



In the kit:



PACKAGE

Dimensions (L x W x H): 0x0x0 mm	Gross Weight: 0 kg
----------------------------------	--------------------



DELTA-OPTI Monika Matysiak; <https://www.delta.poznan.pl>
POL; 60-713 Poznań; Graniczna 10
e-mail: delta-opti@delta.poznan.pl; tel: +(48) 61 864 69 60