

Code: LE-135361

FLUSH-MOUNTING DISTRIBUTION CABINET 12-MODULAR **LE-135361**

Practibox S LEGRAND

Net: **62.12 PLN** Gross: **62.12 PLN**

1-row 12-modular flush-mounting distribution electric cabinet.

The satin material of the distribution cabinet and the cover with the door prevents the effect of mirror reflections of light.

The set includes 1 overcurrent circuit breaker type B16 (model LE-419136).



SPECIFICATION

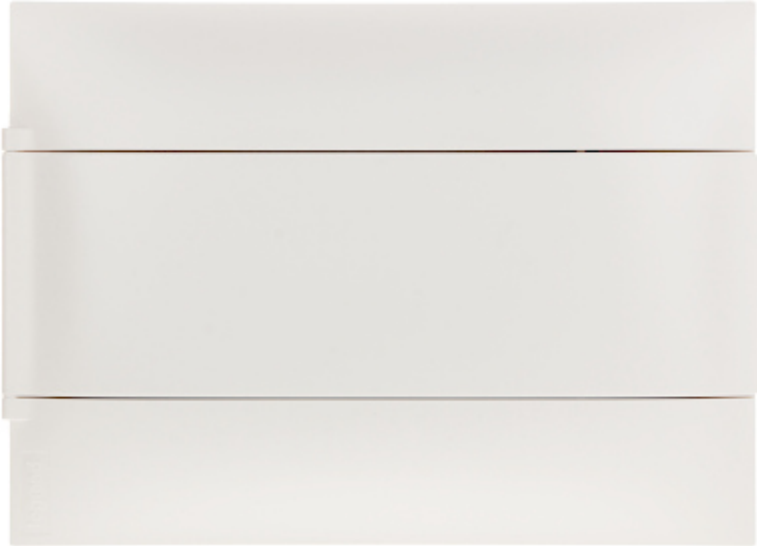
Method of mounting:	Flush-mounted
Number of mounted modules:	12 x 1 row, 17.5 mm
Spacing between TH 35 rails:	—
Transparent door:	—
Main features:	<ul style="list-style-type: none">• Removable chassis with TH 35 rails• Reversible door• Equipped with terminal blocks
Equipment:	<ul style="list-style-type: none">• 1 x Circuit Breaker : Rated voltage : 230 V AC / 400 V AC, 50 / 60 Hz Rated current : 16 A Short-circuit current : 6 kA Tripping curves : B type• Terminal blocks 1 pcs N : 5 x 16 mm² + 5 x 10 mm² , 1 pcs PE : 5 x 16 mm² + 5 x 10 mm²
Material:	Self-extinguishing
Color:	White
"Index of Protection":	IP40
IK rating:	IK07
Compliance with standards:	IEC/EN 60670-24, IEC/EN 61439-3
Operation temp:	-10 °C ... 60 °C
Weight:	0.76 kg

DELTA-OPTI Monika Matysiak; <https://www.delta.poznan.pl>
POL; 60-713 Poznań; Graniczna 10
e-mail: delta-opti@delta.poznan.pl; tel: +(48) 61 864 69 60

Dimensions:	328 x 235 x 104 mm , 306 x 219 x 72 mm - flush-mounting box
Manufacturer / Brand:	LEGRAND
Guarantee:	2 years

PRESENTATION

Front view:

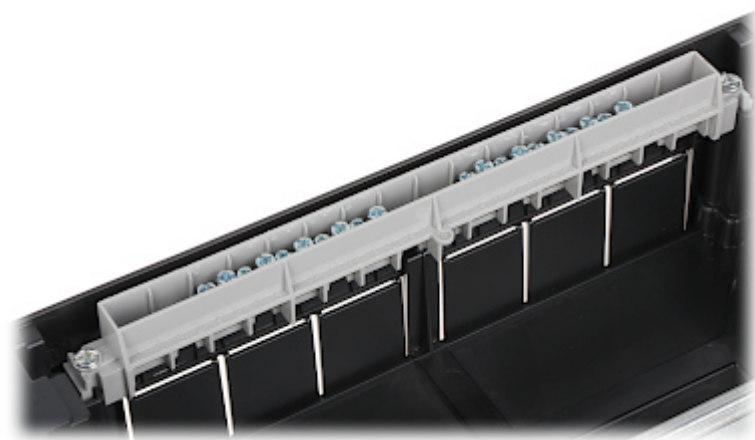
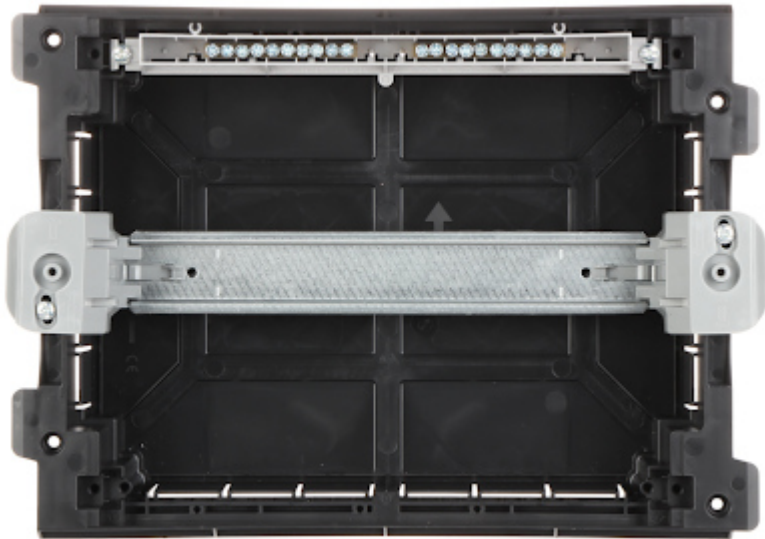


Internal view of the housing:

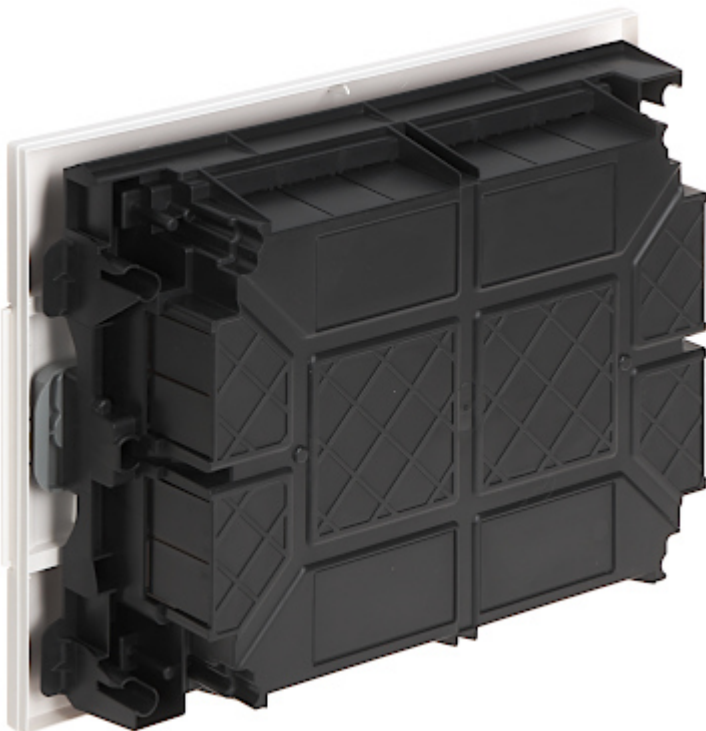


Terminals:





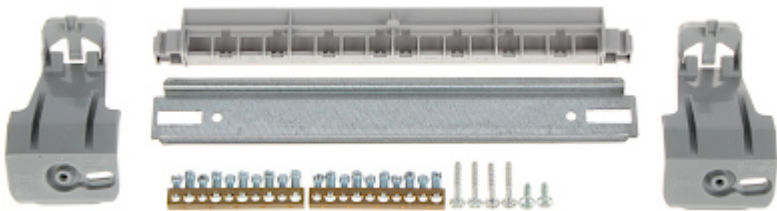
Mounting side view:



The set includes, among others 1 overcurrent circuit breaker type B16:



In the kit:



PACKAGE

Dimensions (L x W x H): 0x0x0 mm	Gross Weight: 0 kg
----------------------------------	--------------------

