

Code: LE-402062

RESIDUAL CURRENT CIRCUIT BREAKER **LE-402062** THREE-PHASE, AC TYPE 30 mA 25 A LEGRAND

Net: **140.87 PLN** Gross: **140.87 PLN**

Residual current circuit breaker with rated sensitivity of $I_{\Delta n} = 30\text{mA}$, AC type. The LE-402062 circuit breaker is compatible to DIN TS-35 rail mounting system.



SPECIFICATION

Device type:	Residual current circuit breaker, Three-phase, AC type
Rated sensitivity:	30 mA
Rated current:	25 A
Number of poles:	4
Breaking capacity:	10000 A
Rated voltage:	400 V AC / 50 Hz
Connectors type:	screw terminals
Housing:	Plastic, DIN, TS-35 rail mounting
Width in 17.5 mm modules:	4
Weight:	0.312 kg
Dimensions:	71 x 83 x 75 mm
Manufacturer / Brand:	LEGRAND
Guarantee:	2 years

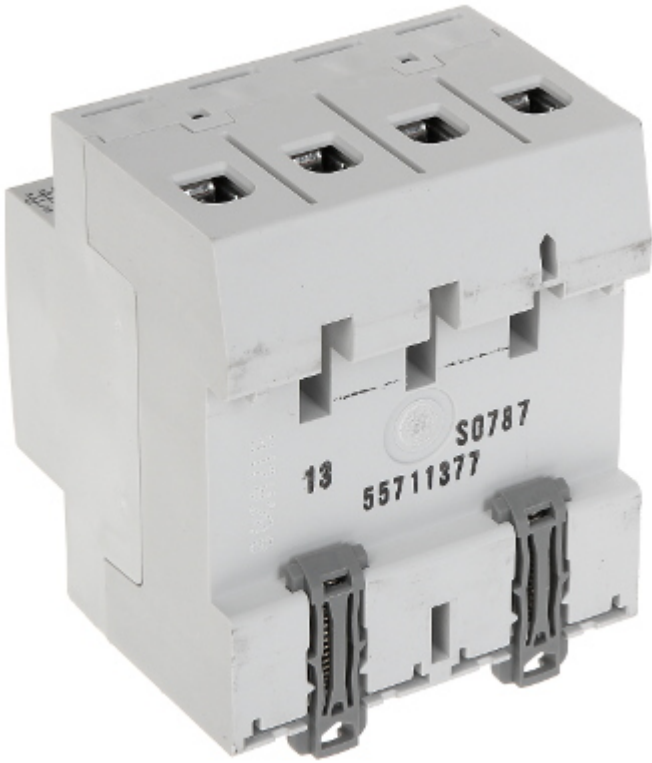
PRESENTATION

Front view:

DELTA-OPTI Monika Matysiak; <https://www.delta.poznan.pl>
POL; 60-713 Poznań; Graniczna 10
e-mail: delta-opti@delta.poznan.pl; tel: +(48) 61 864 69 60



Mounting side view:



Bottom view:



PACKAGE

Dimensions (L x W x H): 0x0x0 mm	Gross Weight: 0 kg
----------------------------------	--------------------



DELTA-OPTI Monika Matysiak; <https://www.delta.poznan.pl>
POL; 60-713 Poznań; Graniczna 10
e-mail: delta-opti@delta.poznan.pl; tel: +(48) 61 864 69 60