

Code: LE-419203

CIRCUIT BREAKER **LE-419203** ONE-PHASE 20 A C TYPE LEGRAND

Net: **3.80 EUR** Gross: **3.80 EUR**

Thermal-magnetic circuit breaker with C-type curve and 20A rated current. The LE-419203 circuit breaker is compatible to DIN TS-35 rail mounting system. Circuit breakers with C-type breaking curve are designed to protection against short-circuits and overloads of the installation, where are used the devices with high inrush currents (motors, transformers).



SPECIFICATION

Device type:	Circuit Breaker, One-phase
Rated current:	20 A
Number of poles:	1
Tripping curves:	C type
Breaking capacity:	6000 A
Rated voltage:	<ul style="list-style-type: none">• 230 V AC / 50 Hz• 400 V AC / 50 Hz
Connectors type:	screw terminals
Housing:	Plastic, DIN, TS-35 rail mounting
Width in 17.5 mm modules:	1
Weight:	0.128 kg
Dimensions:	83 x 74 x 17.5 mm
Manufacturer / Brand:	LEGRAND
Guarantee:	2 years

PRESENTATION

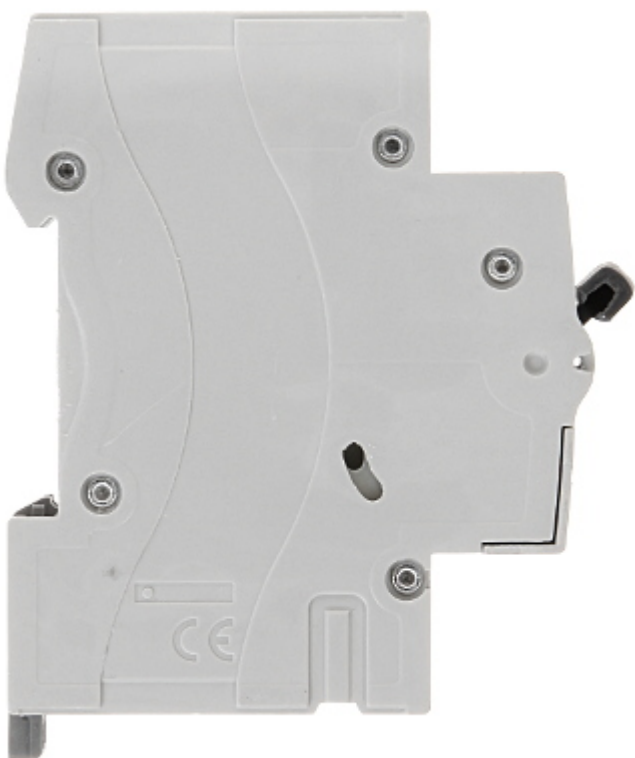
Front view:



DELTA-OPTI Monika Matysiak; <https://www.delta.poznan.pl>
POL; 60-713 Poznań; Graniczna 10
e-mail: delta-opti@delta.poznan.pl; tel: +(48) 61 864 69 60



Side view:



Mounting side view:

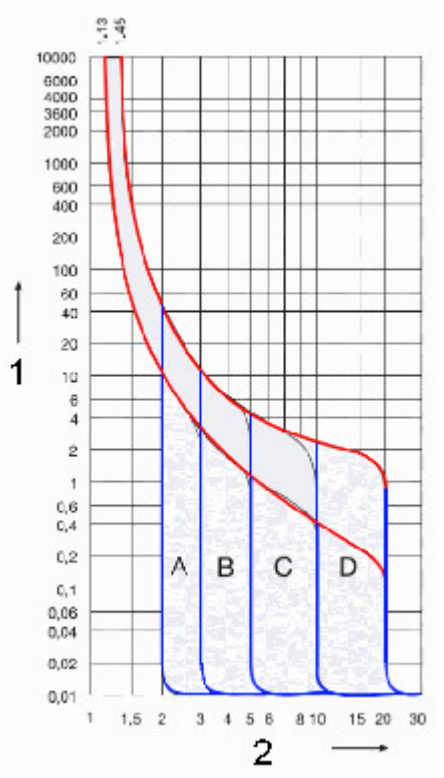


Bottom view:



Tripping curves:





1. Tripping time (s)
2. The multiplier of the rated current

PACKAGE

Dimensions (L x W x H): 0x0x0 mm	Gross Weight: 0 kg
----------------------------------	--------------------

