

Code: LE-406489

ISOLATING SWITCH **LE-406489** THREE-PHASE 100 A LEGRAND

Net: **114.98 PLN** Gross: **114.98 PLN**

Isolating switch ensuring the isolation of entire installation from the mains. The LE-406489 device is designed to mount on DIN TS-35 rail.



SPECIFICATION

Device type:	Isolating switch, Three-phase
Rated current:	100 A
Rated voltage:	500 V AC, 50/60 Hz
Rated short time withstand current:	2500 A
Rated impulse withstand voltage:	6 kV
Number of poles:	4
Category of use:	AC22A
Connectors type:	screw terminals
Main features:	Provided space for a label with description
Housing:	Plastic, DIN, TS-35 rail mounting
Width in 17.5 mm modules:	4
Weight:	0.36 kg
Dimensions:	71 x 83 x 75 mm
Manufacturer / Brand:	LEGRAND
Guarantee:	2 years

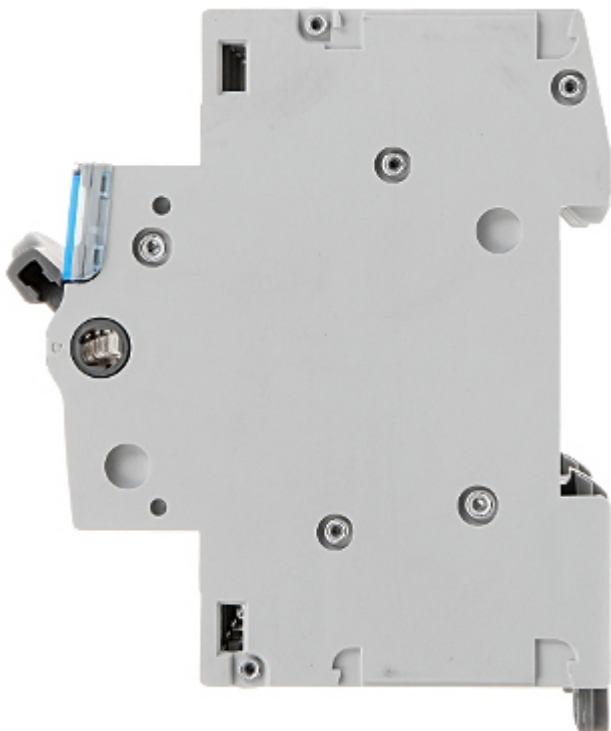
PRESENTATION

Front view:

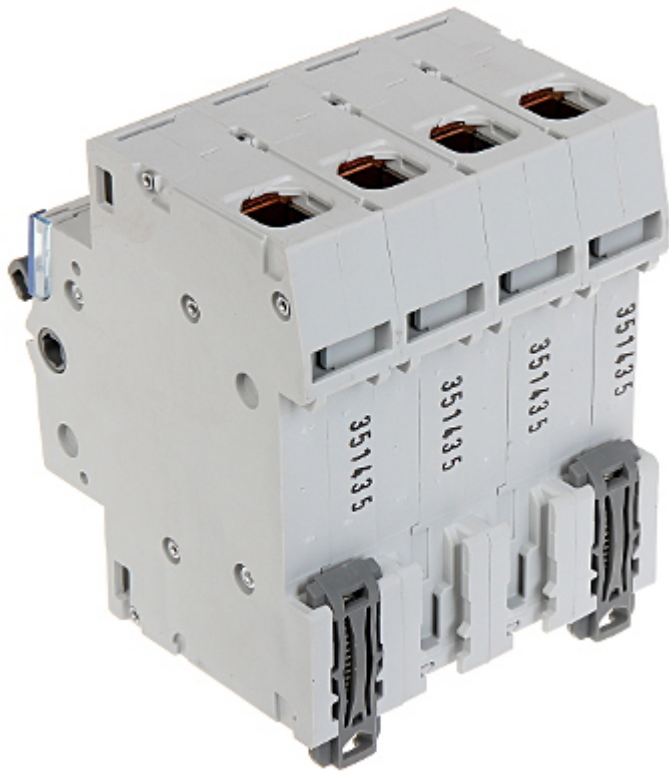
DELTA-OPTI Monika Matysiak; <https://www.delta.poznan.pl>
POL; 60-713 Poznań; Graniczna 10
e-mail: delta-opti@delta.poznan.pl; tel: +(48) 61 864 69 60



Side view:



Mounting side view:



Bottom view:



PACKAGE

Dimensions (L x W x H): 0x0x0 mm	Gross Weight: 0 kg
----------------------------------	--------------------