

Code: DP31.01/11-SIMON54

## TRIPLE PUSH BUTTON **DP31.01/11-SIMON54** 250 V 10 A

Net: **38.19 PLN** Gross: **38.19 PLN**



The triple push-button is designed to fix with frame plates of the Simon 54 Nature, Simon 54 Premium series. The DP31.01/11-SIMON54 can be used for example as bell push-button.

### SPECIFICATION

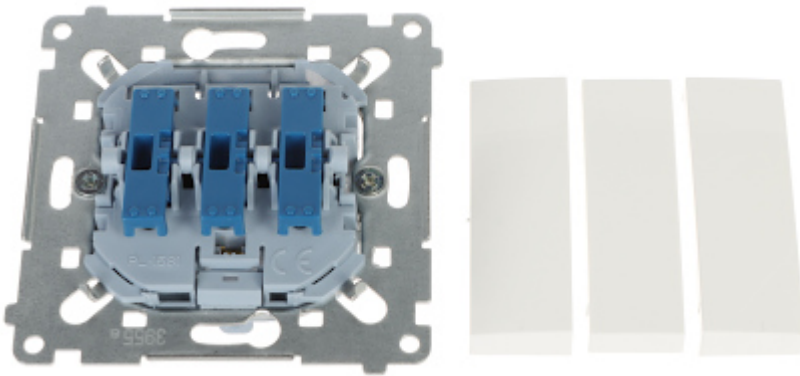
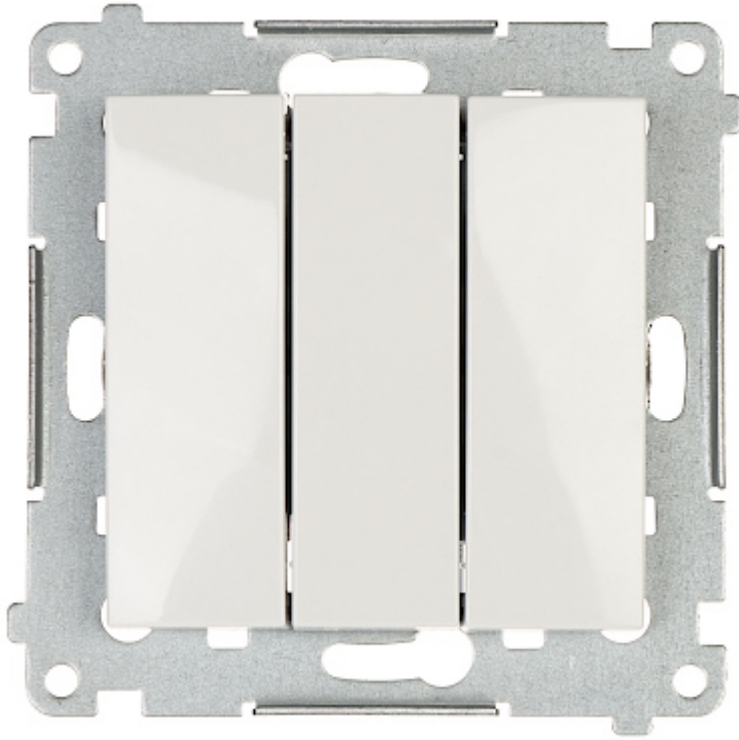
Device type:	Triple Push Button ( bell, monostable )
Rated voltage:	250 V AC
Rated current:	10 A (inductive load)
Connectors type:	Quick-connector
Application:	Flush-mounted, Simon 54 product series, for Nature, Premium frames
Backlight:	—
Assembly:	Claw or screw mounting
"Index of Protection":	IP20
Housing:	Non-halogen plastic, PC
Color:	White (RAL 9003)
Weight:	0.062 kg
Dimensions:	<ul style="list-style-type: none"><li>• 75 x 75 x 34 mm</li><li>• 20 mm - mounting depth</li></ul>
Manufacturer / Brand:	KONTAKT Simon
Guarantee:	6 years

### PRESENTATION

Front view:

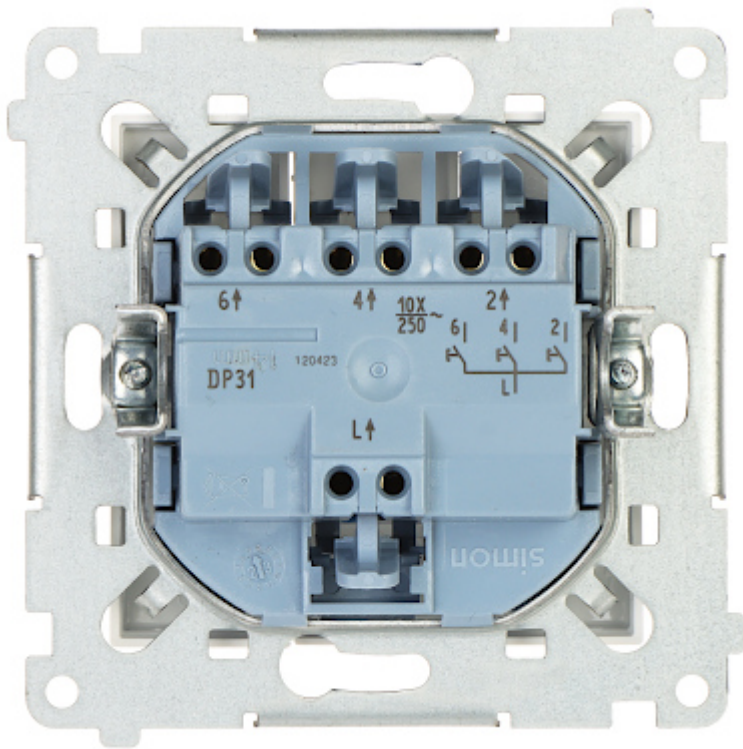
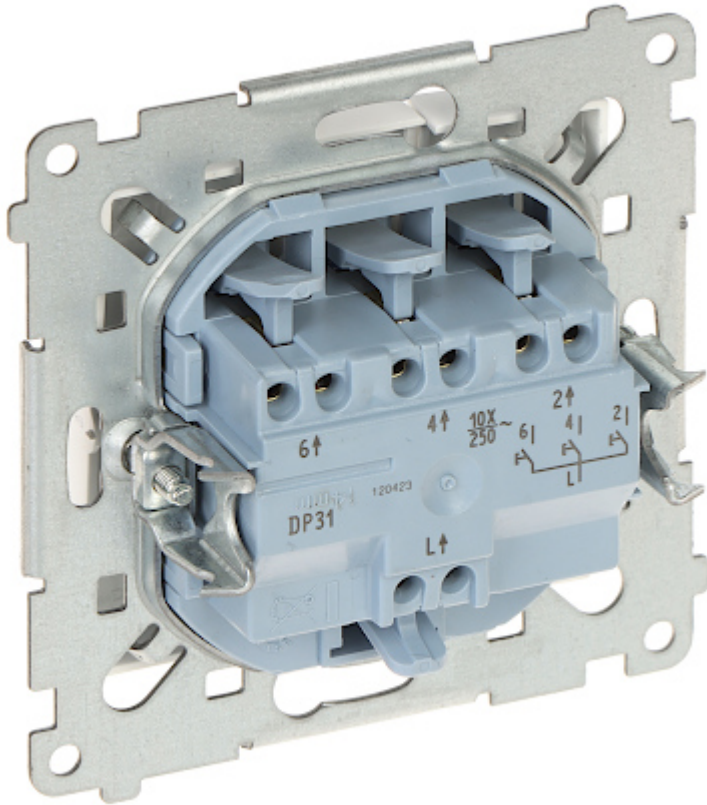


DELTA-OPTI Monika Matysiak; <https://www.delta.poznan.pl>  
POL; 60-713 Poznań; Graniczna 10  
e-mail: [delta-opti@delta.poznan.pl](mailto:delta-opti@delta.poznan.pl); tel: +(48) 61 864 69 60

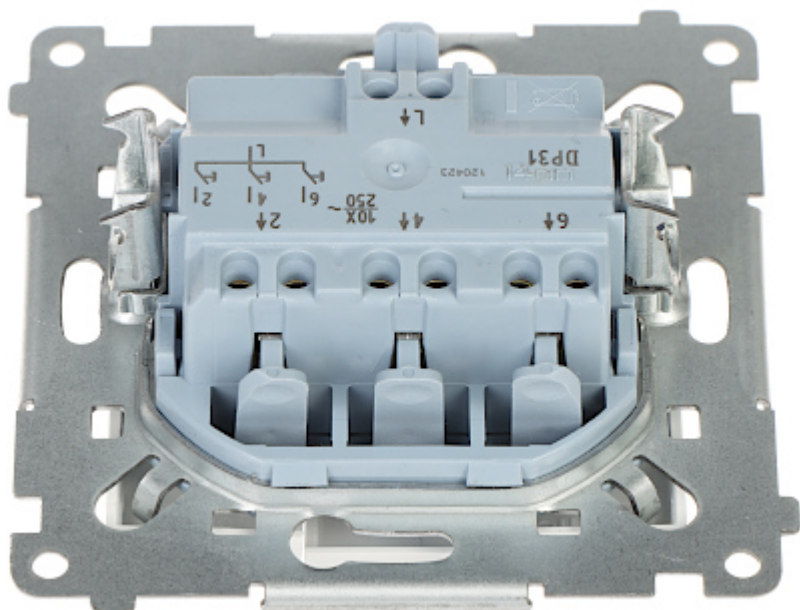


Rear view:





Connectors:



**PACKAGE**

Dimensions (L x W x H): 0x0x0 mm	Gross Weight: 0 kg
----------------------------------	--------------------

