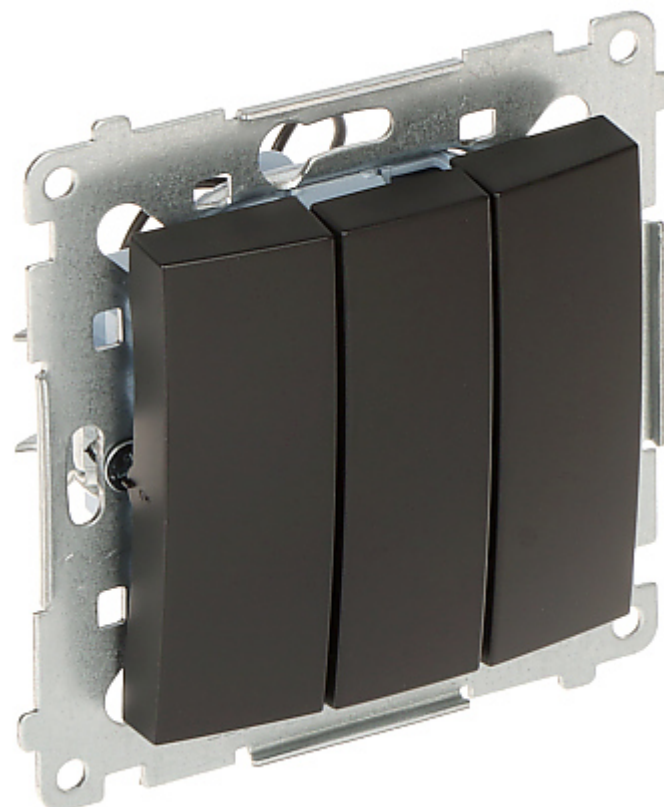


Code: DW31L.01/49-SIMON54

TRIPLE SWITCH WITH BACKLIGHT **DW31L.01/49-SIMON54** 250 V 10 A

Net: **53.49 PLN** Gross: **53.49 PLN**



The triple switch is designed to fix with frame plates of the Simon 54 Nature, Simon 54 Premium series.

SPECIFICATION

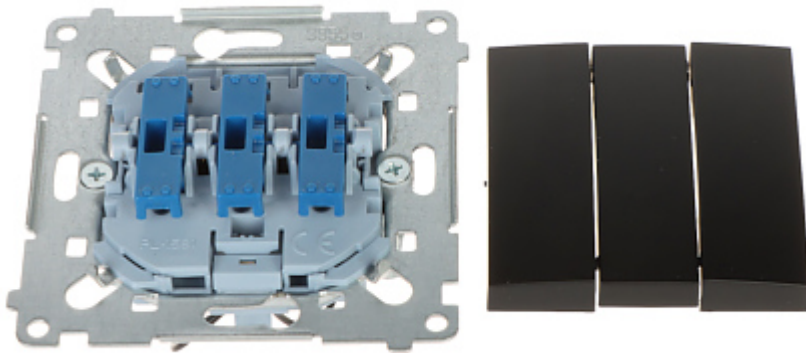
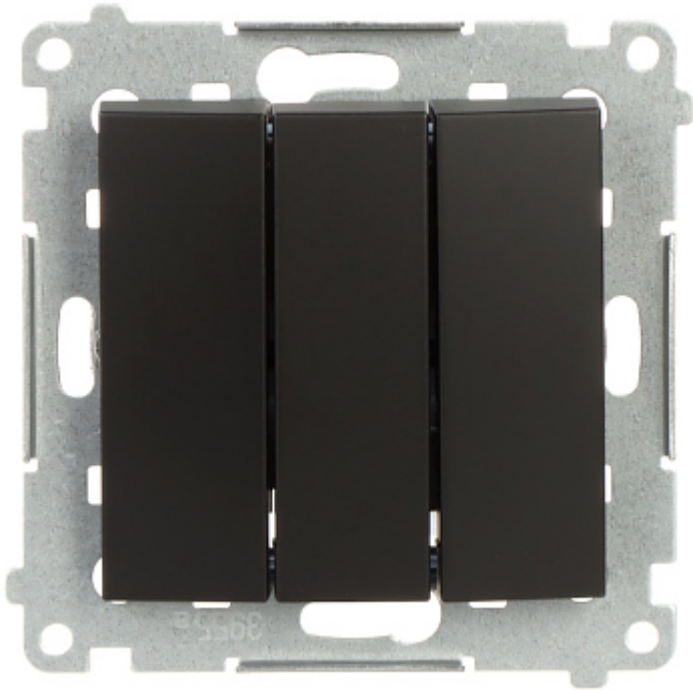
Device type:	Triple Switch (bistable)
Rated voltage:	250 V AC
Rated current:	10 A (inductive load)
Connectors type:	Quick-connector
Application:	Flush-mounted, Simon 54 product series, for Nature, Premium frames
Backlight:	blue LED
Assembly:	Claw or screw mounting
"Index of Protection":	IP20
Housing:	Non-halogen plastic, PC
Color:	Matt black
Weight:	0.06 kg
Dimensions:	<ul style="list-style-type: none">• 75 x 75 x 34 mm• 20 mm - mounting depth
Manufacturer / Brand:	KONTAKT Simon
Guarantee:	6 years

PRESENTATION

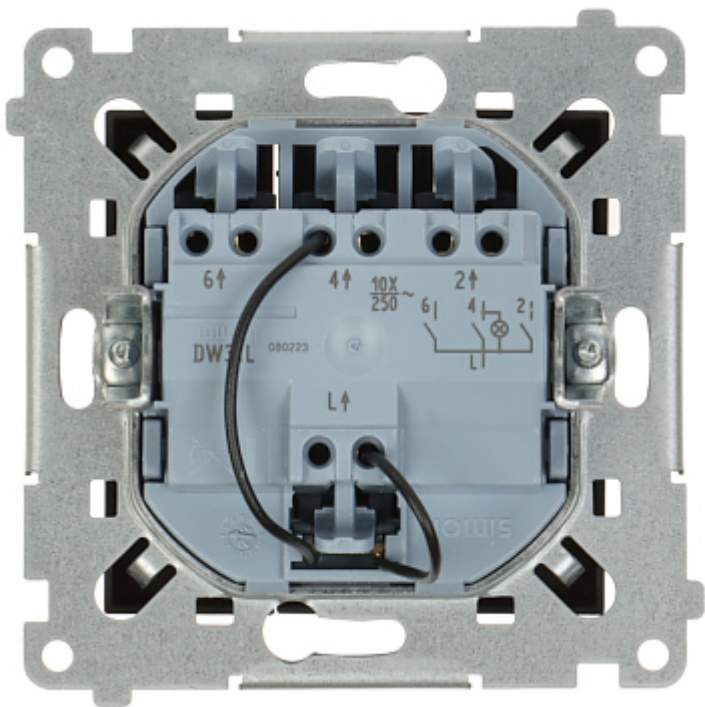
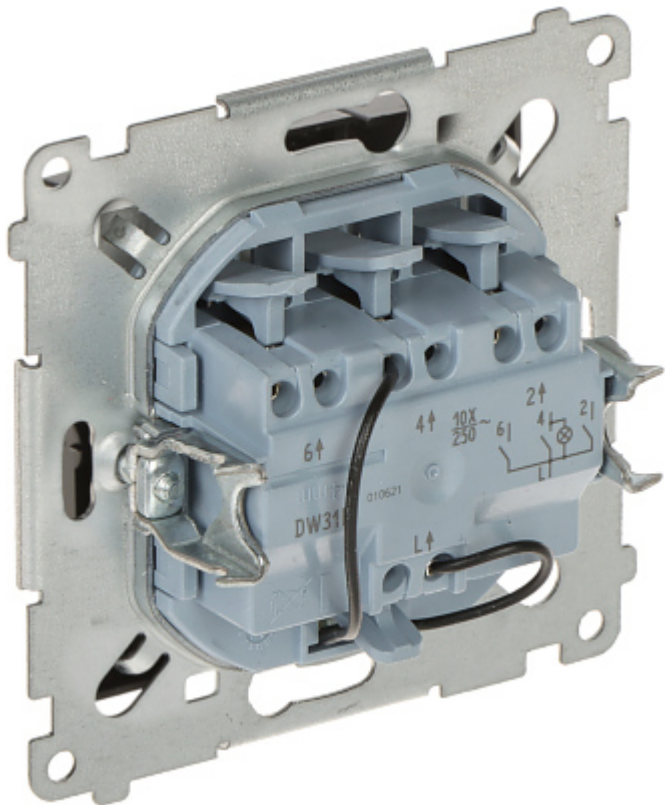
Front view:



DELTA-OPTI Monika Matysiak; <https://www.delta.poznan.pl>
POL; 60-713 Poznań; Graniczna 10
e-mail: delta-opti@delta.poznan.pl; tel: +(48) 61 864 69 60



Rear view:



PACKAGE

Dimensions (L x W x H): 0x0x0 mm	Gross Weight: 0 kg
----------------------------------	--------------------