

Code: DW5.01/11-SIMON54

TWO GANG SWITCH **DW5.01/11-SIMON54** 250 V 10 A

Net: **5.03 EUR** Gross: **5.03 EUR**



The two-gang switch is designed to fix with frame plates of the Simon 54 Nature, Simon 54 Premium series.

SPECIFICATION

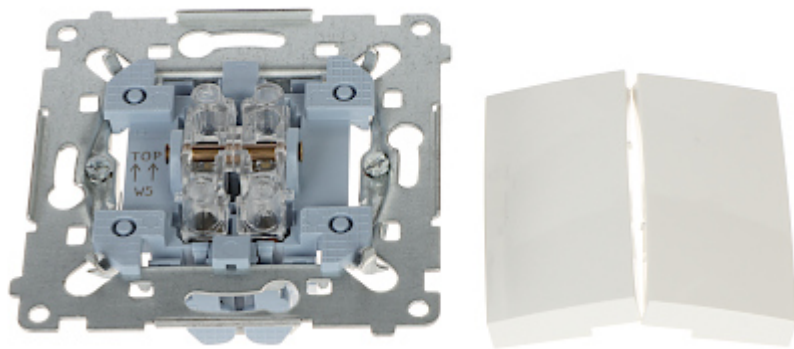
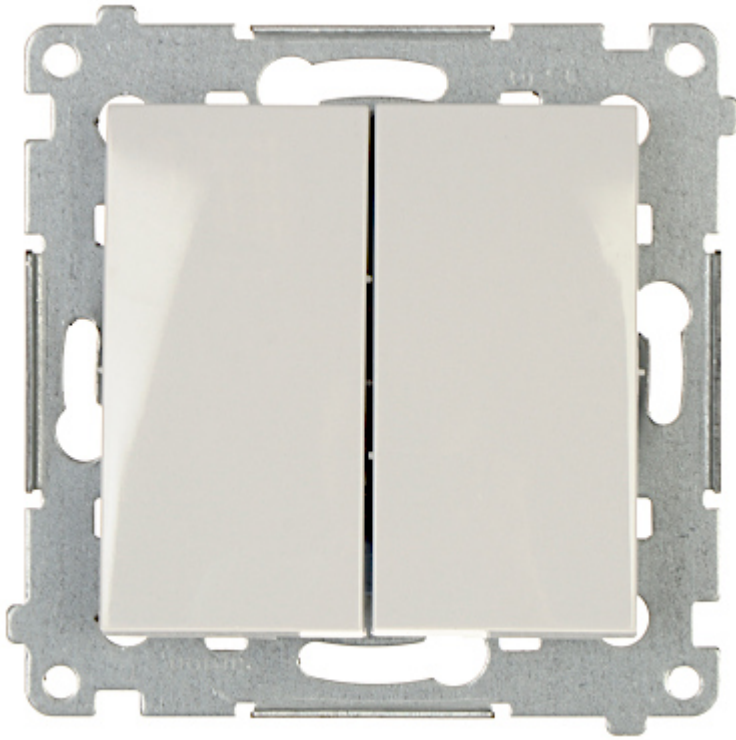
Device type:	Two Gang Switch (bistable)
Rated voltage:	250 V
Rated current:	10 A (inductive load)
Connectors type:	Quick-connector
Application:	Flush-mounted, Simon 54 product series, for Nature, Premium frames
Backlight:	—
Assembly:	Claw or screw mounting
"Index of Protection":	IP20 / IP44 (using frame seal)
Housing:	Non-halogen plastic, PC
Color:	White (RAL 9003)
Weight:	0.058 kg
Dimensions:	<ul style="list-style-type: none">• 75 x 75 x 41 mm• 26 mm - mounting depth
Manufacturer / Brand:	KONTAKT Simon
Guarantee:	6 years

PRESENTATION

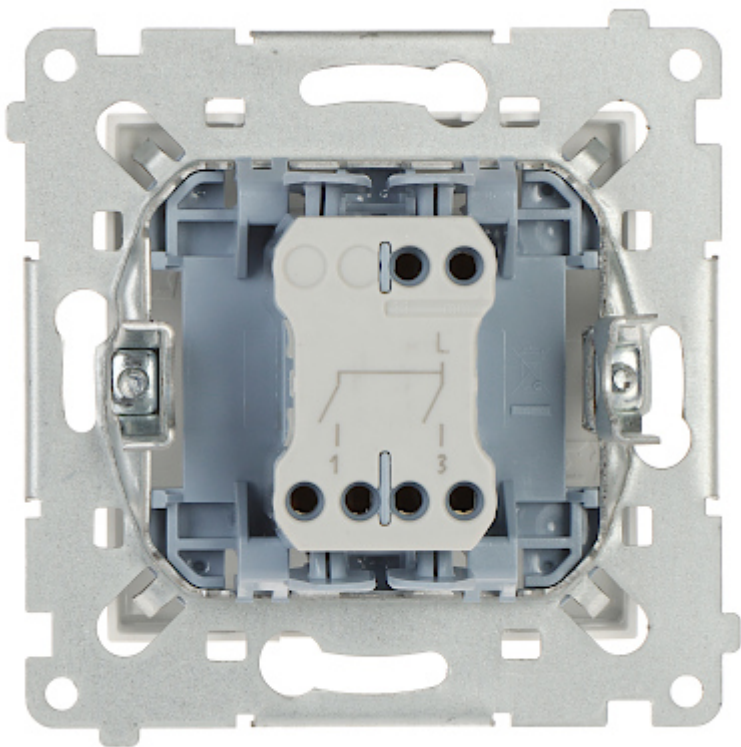
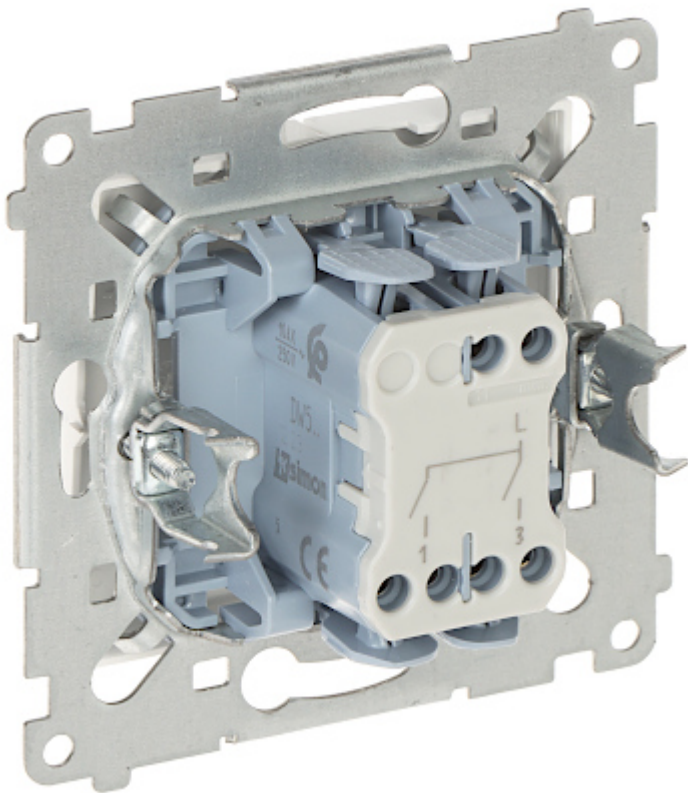
Front view:

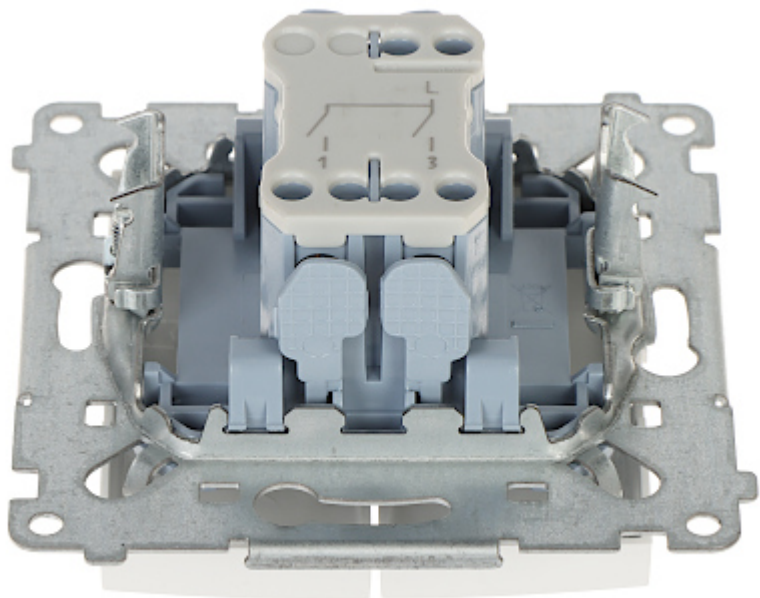


DELTA-OPTI Monika Matysiak; <https://www.delta.poznan.pl>
POL; 60-713 Poznań; Graniczna 10
e-mail: delta-opti@delta.poznan.pl; tel: +(48) 61 864 69 60



Rear view:





PACKAGE

Dimensions (L x W x H): 0x0x0 mm	Gross Weight: 0 kg
----------------------------------	--------------------