

Code: SANTRA/4107-10/EPN

DIMMER SANTRA/4107-10/EPN 250 W Elektro-Plast

Net: 28.15 EUR Gross: 28.15 EUR

The SANTRA/4107-10/EPN dimmer allows you to turn the lighting on and off and smoothly adjust the lighting intensity (push-rotary, single-pole button).

The dimmer is designed to operate with incandescent lamps and dimmable LED lighting. The dimmer may be applied in the two-way and intermediate installations.

Attention! The dimmer is not designed for operation with the core type, toroidal or column transformers, fans and other devices fitted with an electric motor.

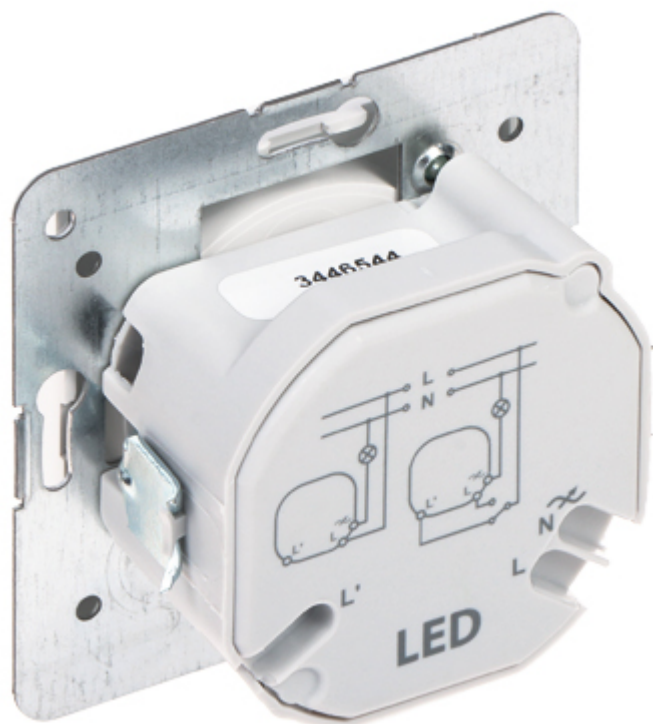


SPECIFICATION

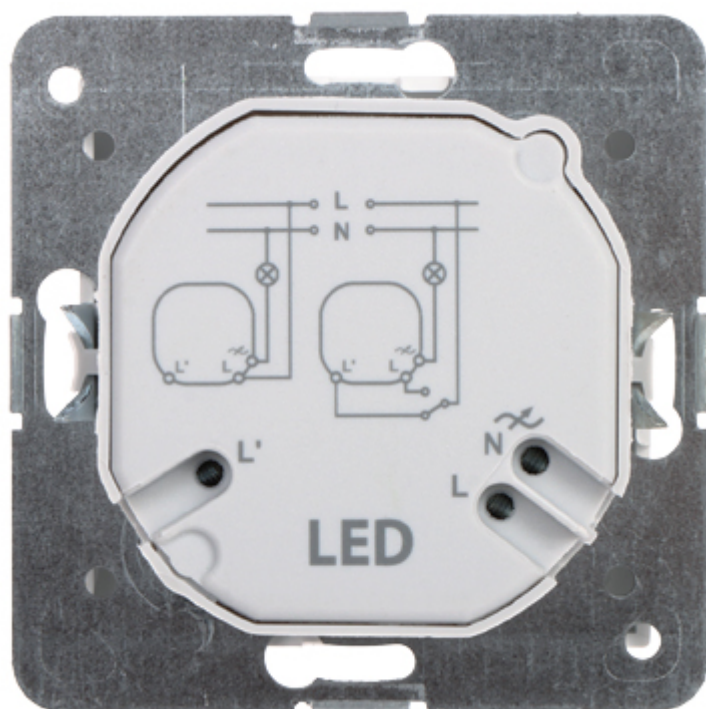
Device type:	Dimmer
Rated voltage:	230 V AC
Nominal power:	<ul style="list-style-type: none">• 10 W ... 250 W - for incandescent lamps - 230 V,• 0 W ... 100 W - for dimmable LEDs
Connectors type:	screw terminals
Application:	Flush-mounted, Santra product series
Assembly:	Claw or screw mounting
Main features:	<ul style="list-style-type: none">• The dimmer is designed to operate with incandescent lamps and dimmable LED lighting• The dimmer may be applied in the two-way and intermediate installations• Short-circuit protection,• Overload protection - Automatic power-off• Programming possibility - Minimum light level setting• Compliance with EN 60669-2-1, EN 61000-3-2, EN 61000-3-3 standards
"Index of Protection":	IP20
Housing:	Plastic (ABS)
Color:	White
Weight:	0.092 kg
Dimensions:	70 x 70 x 51 mm
Manufacturer / Brand:	Elektro-Plast Nasielsk
Guarantee:	7 years

DELTA-OPTI Monika Matysiak; <https://www.delta.poznan.pl>
POL; 60-713 Poznań; Graniczna 10
e-mail: delta-opti@delta.poznan.pl; tel: +(48) 61 864 69 60

PRESENTATION



Rear view:



PACKAGE

Dimensions (L x W x H): 0x0x0 mm	Gross Weight: 0 kg
----------------------------------	--------------------