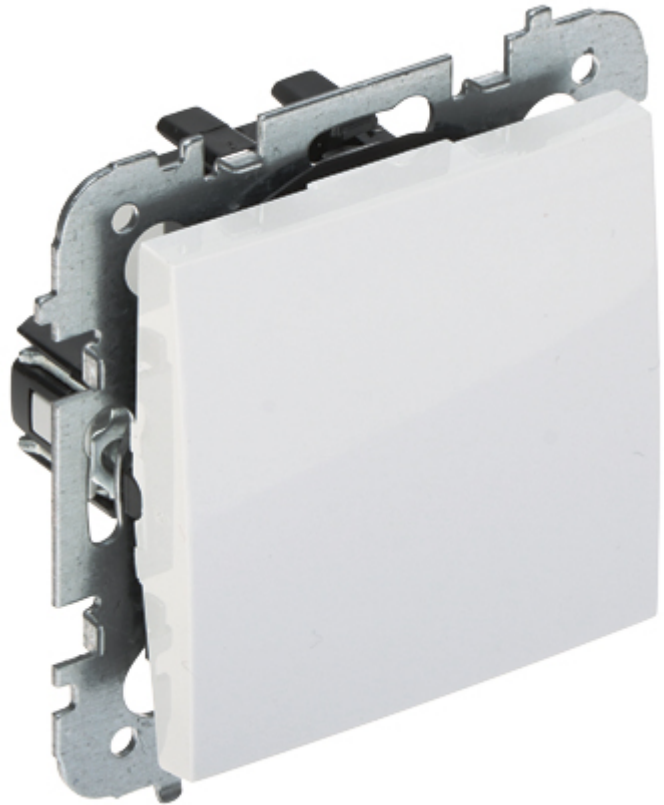


Code: SANTRA/4112-10/EPN

## TWO-WAY SWITCH **SANTRA/4112-10/EPN** 250 V 10 A Elektro-Plast

Net: **12.66 PLN** Gross: **12.66 PLN**



The two-way switch is designed to fix with frame plates of the Santra series.

### SPECIFICATION

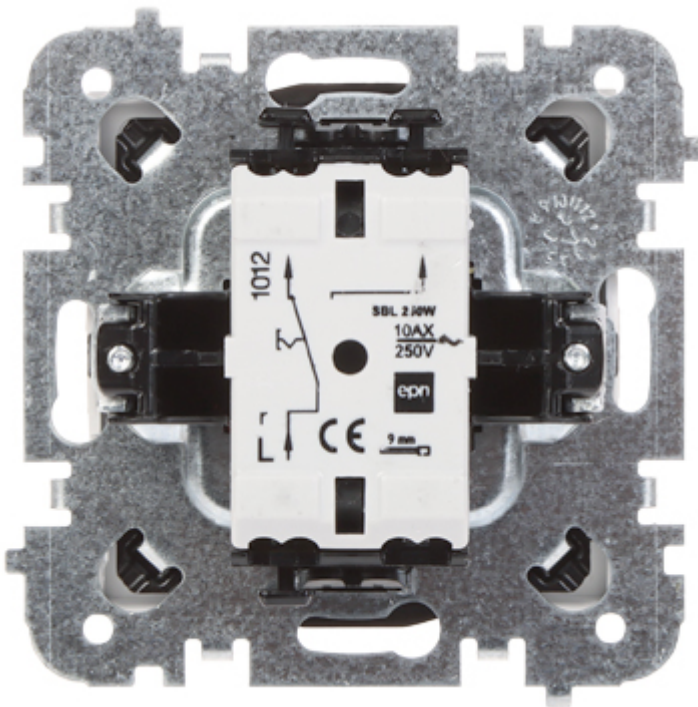
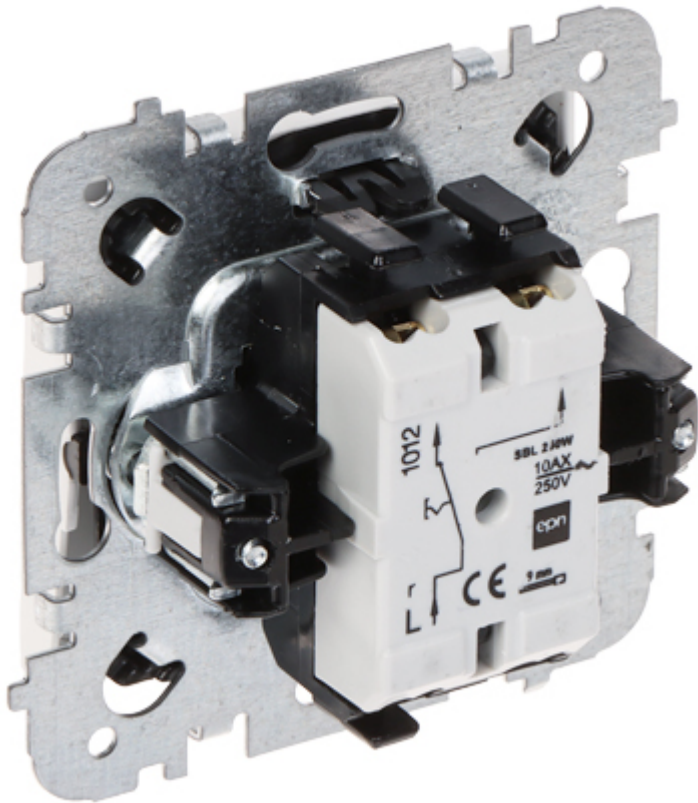
Device type:	Two-way Switch
Rated voltage:	250 V AC
Rated current:	10 A (inductive load)
Connectors type:	Spring terminals
Application:	Flush-mounted, Santra product series
Backlight:	—
Assembly:	Claw or screw mounting
Main features:	Compliance with PN-EN-60669-1:2018-04 standard
"Index of Protection":	IP20
Housing:	Plastic (ABS)
Color:	White
Weight:	0.068 kg
Dimensions:	75 x 75 x 41 mm
Manufacturer / Brand:	Elektro-Plast Nasielsk
Guarantee:	7 years

### PRESENTATION

Rear view:



DELTA-OPTI Monika Matysiak; <https://www.delta.poznan.pl>  
POL; 60-713 Poznań; Graniczna 10  
e-mail: [delta-opti@delta.poznan.pl](mailto:delta-opti@delta.poznan.pl); tel: +(48) 61 864 69 60



## PACKAGE

Dimensions (L x W x H): 0x0x0 mm	Gross Weight: 0 kg
----------------------------------	--------------------