

Code: OR-WE-515

ELECTRIC ENERGY METER **OR-WE-515** ONE-PHASE, MULTI-TARIFF ORNO

Net: 129.00 PLN Gross: 129.00 PLN

One-phase electric energy meter. The OR-WE-515 device is designed to mount on DIN TS-35 rail.
The meter can be programmed with up to 4 independent tariffs. The device allows remote data reading via the RS-485 port.
Energy measurement is performed according to EN50470-1:2006, EN50470-3:2006 standards of the 2014/32/EU Directive.



SPECIFICATION

Device type:	Electric Energy Meter, One-phase, Multi-tariff
Rated voltage:	230 V AC, 50 Hz
Base current:	5 A
Maximal current:	100 A
Measurement unit:	kWh
LCD display:	5+1 digits (00000.0 kWh)
Measuring accuracy:	0.001 kWh
Impulse frequency:	1000 imp/kWh
RS-485 interface:	✓
Connectors type:	screw terminals
Main features:	<ul style="list-style-type: none">• The meter can be programmed with up to 4 independent tariffs• The device allows remote data reading via the RS-485 port• The kit includes two clamp seals to protect the meter connectors
Housing:	Plastic, DIN, TS-35 rail mounting
Width in 17.5 mm modules:	1
Weight:	0.112 kg
Dimensions:	17.7 x 95 x 75 mm
Manufacturer / Brand:	ORNO
Guarantee:	2 years

DELTA-OPTI Monika Matysiak; <https://www.delta.poznan.pl>
POL; 60-713 Poznań; Graniczna 10
e-mail: delta-opti@delta.poznan.pl; tel: +(48) 61 864 69 60

PRESENTATION



Front panel:

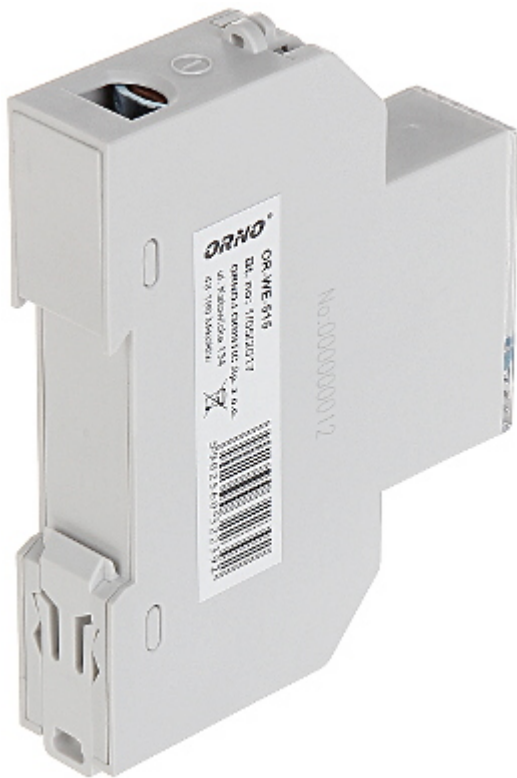




Side view:



Mounting side view:



Device connectors:





The kit includes two clamp seals to protect the meter connectors:



PACKAGE

Dimensions (L x W x H): 0x0x0 mm	Gross Weight: 0 kg
----------------------------------	--------------------