

Code: FDC-08

DC FILTER **FDC-08** TO SWITCHING ADAPTERS

Net: **9.57 EUR** Gross: **9.57 EUR**

The filter to eliminate the interferences from switching adapters. It is used as power outlet. It should be used as close as possible to the camera, to eliminate any additional interferences on camera power lines (especially the long distance lines).



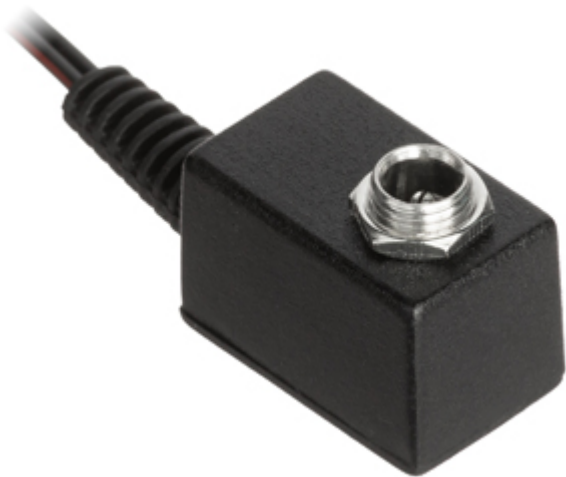
SPECIFICATION

Maximal current:	0.8 A
Manufacturer / Brand:	DELTA
Power connectors type:	2.1/5/5 mm plug
Housing type:	2.1/5.5 mm socket
Weight:	0.02 kg
Dimensions:	26 x 21 x 16 mm
Guarantee:	3 years

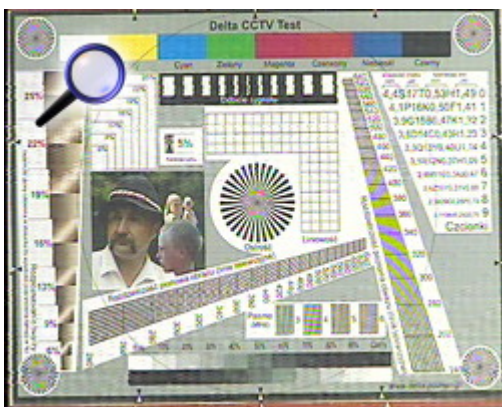
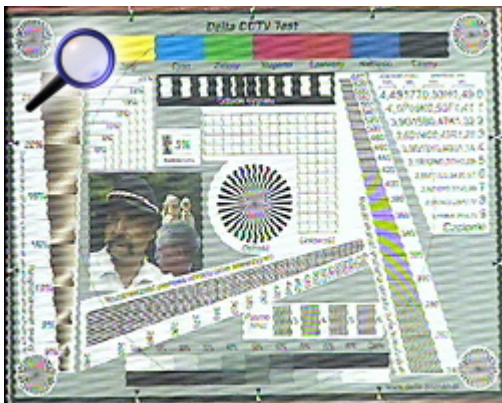
PRESENTATION

Connectors:

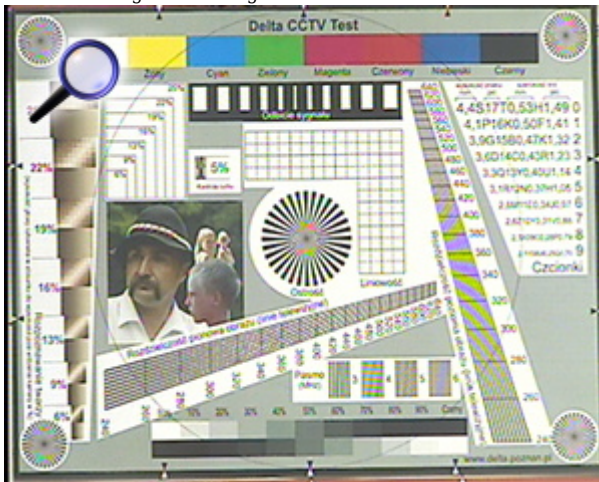




The typical interferences from switching adaptor visible on the image:



The same image after using the FDC-08 filter:



Connection schematic diagram:



DELTA-OPTI Monika Matysiak; <https://www.delta.poznan.pl>
 POL; 60-713 Poznań; Graniczna 10
 e-mail: delta-opti@delta.poznan.pl; tel: +(48) 61 864 69 60



PACKAGE

Dimensions (L x W x H): 0x0x0 mm	Gross Weight: 0 kg
----------------------------------	--------------------

