

Code: ATLO-606

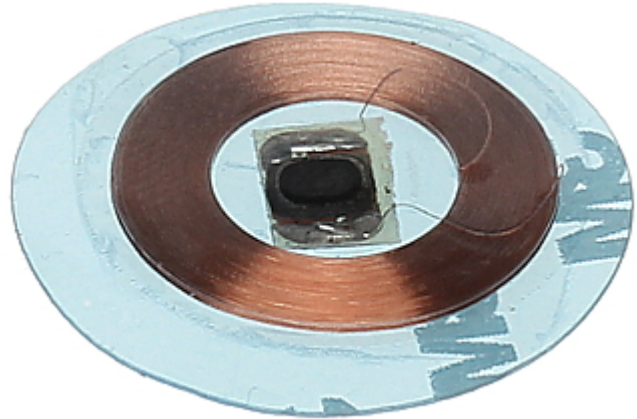
## PROGRAMMABLE RFID TAG ATLO-606

Net: 5.00 PLN Gross: 5.00 PLN

Programmable, proximity RFID TAG placed in a very flexible sheath. Device can be used in access control systems with high security level.

The device has very small dimensions.

Attention! The ATLO-606 programmable cards have the same ID number.



### SPECIFICATION

Standard:	Unique EM 125kHz
Compatibility:	EM4100/4102
Possibility of programming the serial number (ID):	✓
Ability to write to internal memory:	—
Serial Number overprint:	—
Main features:	<ul style="list-style-type: none"><li>• Range : ~ 4 cm,</li><li>• The 6605 chip</li><li>• Can be programmed using the RUD-1 + PRT-32EM</li></ul>
Weight:	0.001 kg
Dimensions:	Ø 20 x 0.61 mm
Manufacturer / Brand:	ATLO
Guarantee:	2 years

### PRESENTATION

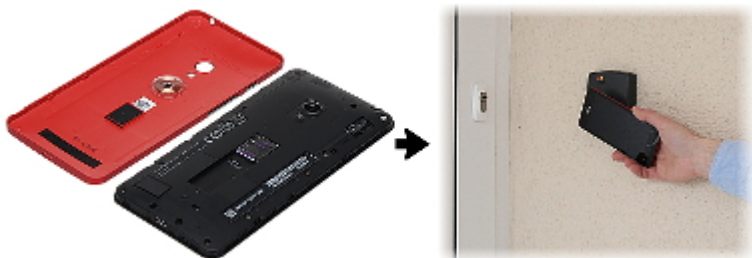
The bottom layer is equipped with a Scotch tape:



DELTA-OPTI Monika Matysiak; <https://www.delta.poznan.pl>  
POL; 60-713 Poznań; Graniczna 10  
e-mail: delta-opti@delta.poznan.pl; tel: +(48) 61 864 69 60



Example of application:





## PACKAGE

Dimensions (L x W x H): 0x0x0 mm	Gross Weight: 0 kg
----------------------------------	--------------------