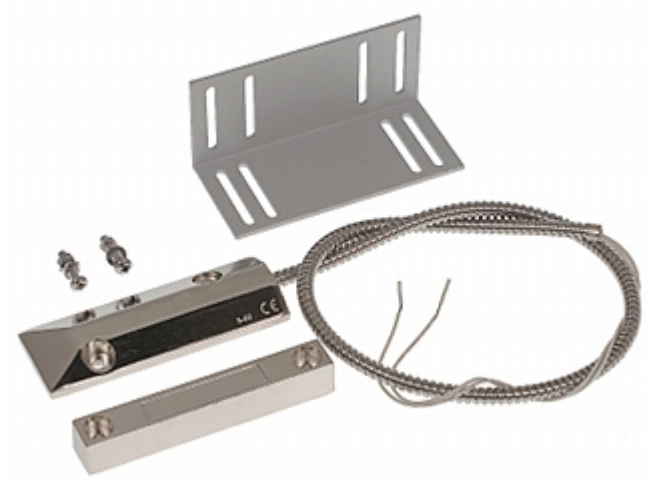


Code: B-4M

## GATE MAGNETIC DETECTOR **B-4M** SATEL

Net: **81.00 PLN** Gross: **81.00 PLN**

The B-4M gate magnetic detector is designed to surface mount.



### SPECIFICATION

Detection:	Gate opening
Maximum reed switched voltage:	100 V
Maximal switched current:	400 mA
Make distance:	75 mm
Break distance:	80 mm
Main features:	<ul style="list-style-type: none"><li>• Rugged, metal sealed body</li><li>• Armored cables</li><li>• Angle bar included in the kit</li></ul>
Weight:	0.23 kg
Dimensions:	107 x 50 mm
Manufacturer / Brand:	SATEL
Guarantee:	2 years

### PRESENTATION



**PACKAGE**

Dimensions (L x W x H): 0x0x0 mm	Gross Weight: 0 kg
----------------------------------	--------------------

