

Code: SD6CE225U-HNI

IP SPEED DOME CAMERA OUTDOOR **SD6CE225U-HNI** - 1080p 4.8 ... 120 mm DAHUA

Net: **5 311.00 PLN** Gross: **5 311.00 PLN**

IP camera equipped with very good high resolution sensor. Due to above it is perfect solution for surveillance systems requiring persons or vehicles recognition.

Built-in IR illuminator allows to operate at night conditions, and vari-focal lens with wide range of view angle adjustment enables optimal set the view field of camera to all conditions. The range of IR illumination according to the manufacturer data, depends on outer conditions (visibility - air transparency, environment, wall colors ie. scene reflectance).

For a few models of IP cameras working at $\geq 1920 \times 1080$ resolution we recommend to use of network with 1Gb/s bandwidth.

Thanks to the "Starlight" technology used, the camera only needs very low lighting to obtain a clear color image.



SPECIFICATION

Standard:	TCP/IP
Sensor:	1/2.8 " SONY Starvis™ Back-illuminated CMOS
Matrix size:	2.1 Mpx
Resolution:	1920 x 1080 - 1080p 1280 x 960 - 1.3 Mpx 1280 x 720 - 720p 704 x 576 - D1
Scanning system:	Progressive
Lens:	4.8 ... 120 mm
View angle:	• 63 ° ... 2.6 ° (manufacturer data) • 56 ° ... 3.1 ° (our tests result)
Optical zoom:	x 25
Digital zoom:	x 16
Range of IR illumination:	200 m
S/N ratio:	> 55 dB (AGC off)
Video output:	1 Vpp / 75 Ω
Preset rotation speed:	max. 300 °/s (horizontal) max. 200 °/s (vertical)
Rotation speed (manual control):	0.1 °/s ... 200 °/s (horizontal) 0.1 °/s ... 120 °/s (vertical)

DELTA-OPTI Monika Matysiak; <https://www.delta.poznan.pl>
POL; 60-713 Poznań; Graniczna 10
e-mail: delta-opti@delta.poznan.pl; tel: +(48) 61 864 69 60

Horizontal rotation range:	360 ° continuous
Vertical rotation range:	-20 ° ... 90 °
RS-485 interface:	✓
Protocols:	Pelco-D, Pelco-P, DH-SD Auto detection
Number of presets:	300
Horizontal scan:	✓
Route settings:	8
Image compression method:	H.265+ / H.265 / H.264+ / H.264 / MJPEG
Bitrate:	448 ... 8192 kbps
Alarm inputs / outputs:	7 / 2
Audio:	<ul style="list-style-type: none"> • External microphone input • Audio output • Bi-directional audio streaming support • Audio detection
Main stream frame rate:	max. 50 fps - 1080p
Memory card slot:	Micro SD memory cards up to 256GB support (possible local recording)
Network interface:	10/100 Base-T (RJ-45)
Network protocols:	IPv4/IPv6, HTTP, HTTPS, SSL, TCP/IP, UDP, UPnP, ICMP, IGMP, SNMP, RTSP, RTP, SMTP, NTP, DHCP, DNS, PPPoE, DDNS, FTP, IP Filter, QoS, Bonjour, IEEE 802.1x
WEB Server:	Built-in, NVR compliance
Max. number of on-line users:	20
ONVIF:	16.12
Mobile phones support:	Port 37777 <ul style="list-style-type: none"> • Android: Free application DMSS • iOS (iPhone): Free application DMSS
Default IP address:	192.168.1.108
Default admin user / password:	admin / - The administrator password should be set at the first start
Web browser access ports:	80, 37777
PC client access ports:	37777
Mobile client access ports:	37777
Port ONVIF:	80
RTSP URL:	rtsp://admin:hasło@192.168.1.108:554/cam/realmonitor?channel=1&subtype=0 - Main stream rtsp://admin:hasło@192.168.1.108:554/cam/realmonitor?channel=1&subtype=1 - Sub stream
Main features:	<ul style="list-style-type: none"> • WDR - 120 dB - Wide Dynamic Range • EIS - Electronic Image Stabilization • ROI - improve the quality of selected parts of image • F-DNR (Defog) - Reduction of image noise caused by precipitation • 2D-DNR, 3D-DNR - Digital Noise Reduction • Intelligent Object Tracking • ICR - Movable InfraRed filter • AGC - Automatic Gain Control • Configurable Privacy Zones - 24 • BLC/HLC - Back Light / High Light Compensation • The camera is equipped with a built-in heater with a thermostat • IVS analysis, crossing the line (tripwire), intrusion, abandoned/missing object, face detection, heat map • Motion Detection • Sharpness - sharper image outlines • Mirror - Mirror image • Day/Night mode (color/b&w/auto)



Power supply:	<ul style="list-style-type: none"> • PoE (802.3at), • 24 V AC / 3 A (power adapter included)
Power consumption:	≤ 25 W
Housing:	Speed Dome Metal
Color:	White
Vandal-proof:	IK10
"Index of Protection":	IP67
Operation temp:	-40 °C ... 70 °C
Weight:	6.53 kg (with bracket)
Dimensions:	209 x 270 x 420 mm (with bracket)
Supported languages:	Polish, English, Arabic, Czech, French, Spanish, Dutch, Korean, German, Persian, Portuguese, Russian, Italian
Manufacturer / Brand:	DAHUA
Guarantee:	3 years

PRESENTATION

Bottom view:



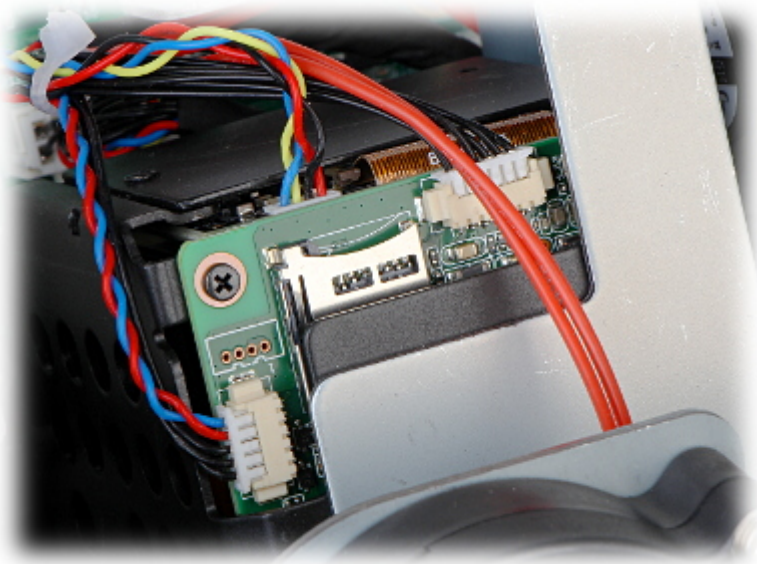
Internal view (after open the enclosure):



DELTA-OPTI Monika Matysiak; <https://www.delta.poznan.pl>
 POL; 60-713 Poznań; Graniczna 10
 e-mail: delta-opti@delta.poznan.pl; tel: +(48) 61 864 69 60



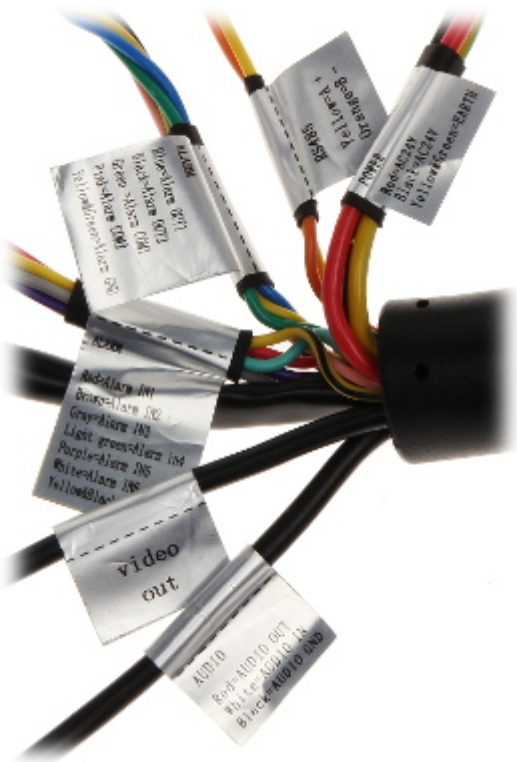
Memory card slot:



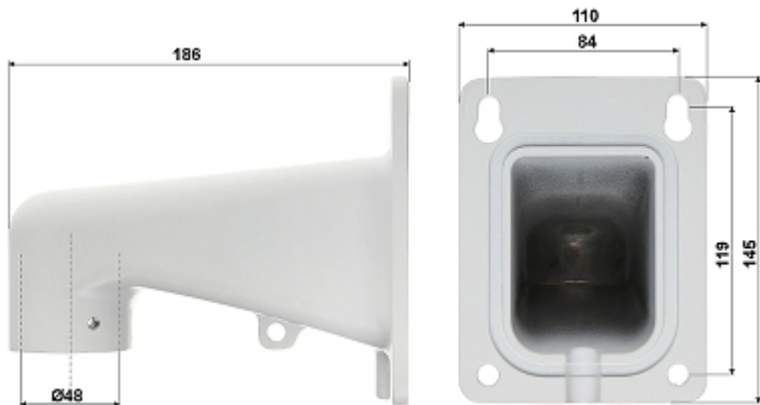
Connectors:



Connectors description:



Bracket dimensions:



See how to initialize DAHUA cameras:
 :
 In the kit:



OUR TESTS

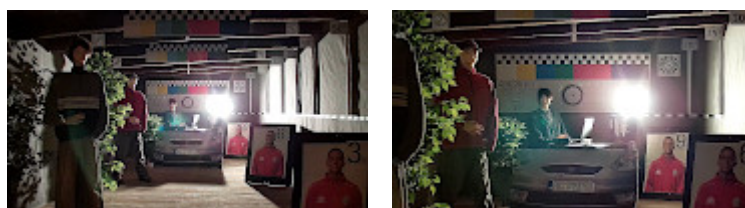
Camera image at artificial illumination (about 30Lux):



Camera image at night conditions with internal built-in IR illuminator on:



Camera image at direct strong light opposite to camera:



OUR OPINIONS



- Thanks to the "Starlight" technology used, the camera only needs very low lighting to obtain a clear color image.

PACKAGE

Dimensions (L x W x H): 0x0x0 mm	Gross Weight: 0 kg
----------------------------------	--------------------

