

Code: HAC-HMW3200L-FR-0210B-S5

# AHD, CVI, TVI, CVBS MOBILE CAMERA **HAC-HMW3200L-FR-0210B-S5** - 1080p 2.1 mm, 2.8 mm DAHUA Net: **167.22 USD** Gross: **167.22 USD**

The HAC-HMW3200L-FR-0210B-S5 double camera is designed for installation inside vehicles. The design of the device allows to record both what is in front of or behind the vehicle, as well as inside.

In addition, the IR illuminator used with the camera facing the interior of the vehicle facilitates the observation of the driver and passengers in difficult lighting conditions.

**Attention!** The camera is not compatible with AUTONE recorders.



## SPECIFICATION

Standard:	AHD, HD-CVI, HD-TVI, PAL
Sensor:	1/2.7 " Progressive Scan CMOS
Matrix size:	2.1 Mpx
Resolution:	1920 x 1080 - 1080p , 1280 x 720 - 720p , 960 x 576 - 960H PAL
Lens:	2.1 mm - Camera for observing the interior of the vehicle , 2.8 mm - Front / rear view camera
View angle:	132 ° - Camera for observing the interior of the vehicle / 109 ° - Front / rear view camera (manufacturer data) 127 ° - Camera for observing the interior of the vehicle / 104 ° - Front / rear view camera (our tests result)
Min. illumination:	0.02 Lux F2.0 @ 30IRE
Range of IR illumination:	3 m
S/N ratio:	> 65 dB
Video output:	2 x 1 Vpp / 75 Ω - M12, 4-pin socket, Code A
Audio:	Microphone built-in

Main features:	<ul style="list-style-type: none"> <li>• AGC - Automatic Gain Control</li> <li>• BLC/HLC - Back Light / High Light Compensation</li> <li>• D-WDR - Wide Dynamic Range</li> <li>• 2D-DNR - Digital Noise Reduction</li> <li>• Auto White Balance</li> <li>• Day/night mode - Camera for observing the interior of the vehicle</li> <li>• Mirror - Mirror image</li> <li>• Privacy zones - max. 8</li> <li>• Ergonomically designed High-impact ABS case for durability - EN50155</li> </ul>
OSD menu:	✓
Housing:	Plastic
Color:	Black
Application:	The camera is designed for installation inside vehicles
Power supply:	12 V DC / 160 mA - Powering the cameras with 12V DC voltage directly from recorder
Power consumption:	max. 1.9 W
Operation temp:	-40 °C ... 60 °C
Length of the cable:	2 x 0.5 m
Weight:	0.16 kg
Dimensions:	116 x 100 x 50 mm
Supported languages:	Polish, English, French, Spanish, German, Portuguese, Russian, Italian
Manufacturer / Brand:	DAHUA
Guarantee:	<b>5 years</b>

## PRESENTATION



Front / rear view camera:



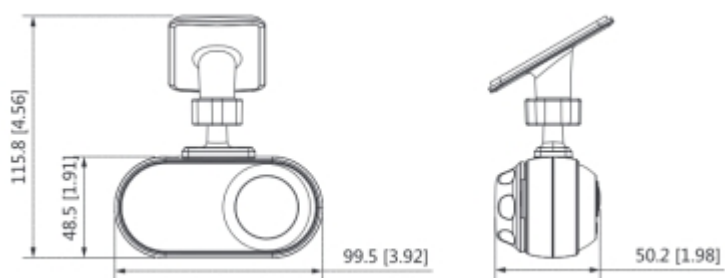
Mounting side view:



Camera connectors:



Dimensions:



In the kit:



## OUR TESTS

Camera for observing the interior of the vehicle:

Camera image at artificial illumination (about 30Lux):



Camera image at night conditions with internal built-in IR illuminator on:



Camera image at direct strong light opposite to camera:

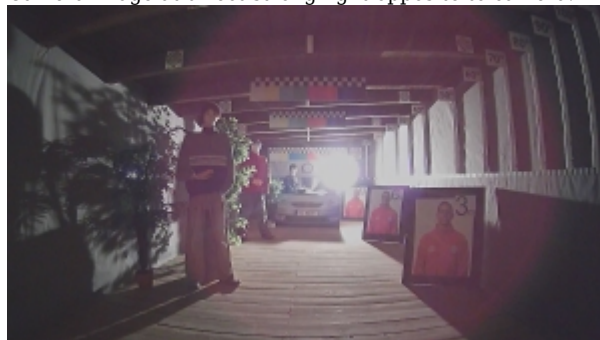


Front / rear view camera:

Camera image at artificial illumination (about 30Lux):



Camera image at direct strong light opposite to camera:

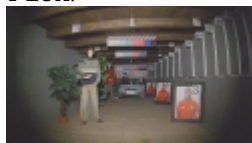


Camera image at night conditions, at different illumination values show below:

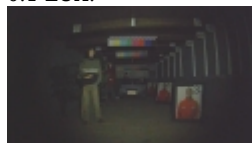
10 LUX:



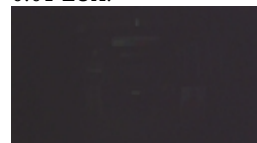
1 LUX:



0.1 LUX:



0.01 LUX:



## PACKAGE

DELTA-OPTI Monika Matysiak; <https://www.delta.poznan.pl>  
POL; 60-713 Poznań; Graniczna 10  
e-mail: delta-opti@delta.poznan.pl; tel: +(48) 61 864 69 60

Dimensions (L x W x H): 0x0x0 mm	Gross Weight: 0 kg
----------------------------------	--------------------

