

Code: VTH1550CHW-2

## INDOOR PANEL **VTH1550CHW-2** DAHUA

Net: 1 355.00 PLN Gross: 1 355.00 PLN

The VTH1550CHW-2 panel has been designed to create a simple and effective system of local communication.

It can be also used as simple alarm control panel, or notification module by the support 6 alarm inputs.

**Attention!** When selecting 2-wire devices, check the compatibility list available at the bottom of the page in the "files" section.



### SPECIFICATION

Application:	2-wire doorphone installation
Shield:	7 " TFT-LCD color matrix
Resolution:	800 x 480
Internal memory:	—
Main features:	<ul style="list-style-type: none"><li>• Memory card slot,</li><li>• Microphone built-in,</li><li>• Speakers built-in,</li><li>• Bidirectional communication,</li><li>• Smooth adjustment of monitor parameters: image brightness, ring tone volume and conversation volume,</li><li>• Automatically capture and save images if there is no response to the doorbell,</li><li>• Records a short video message if there is no response to the doorbell button,</li><li>• The possibility of extending the functionality to IP system features with using the DHI-VTNC3000A,</li><li>• The ability of direct communication between two or more panels ,</li></ul>
Controlling:	One-touch action buttons + capacitive touch screen
Alarm inputs:	6
Power supply:	24 V DC
Operation temp:	-10 °C ... 60 °C
Color:	White
Weight:	0.464 kg
Dimensions:	200 x 137 x 28 mm
Supported languages:	English, Bulgarian, Czech, Finnish, Slovenian, Slovak, Hungarian
Manufacturer / Brand:	DAHUA

DELTA-OPTI Monika Matysiak; <https://www.delta.poznan.pl>  
POL; 60-713 Poznań; Graniczna 10  
e-mail: [delta-opti@delta.poznan.pl](mailto:delta-opti@delta.poznan.pl); tel: +(48) 61 864 69 60

Guarantee:

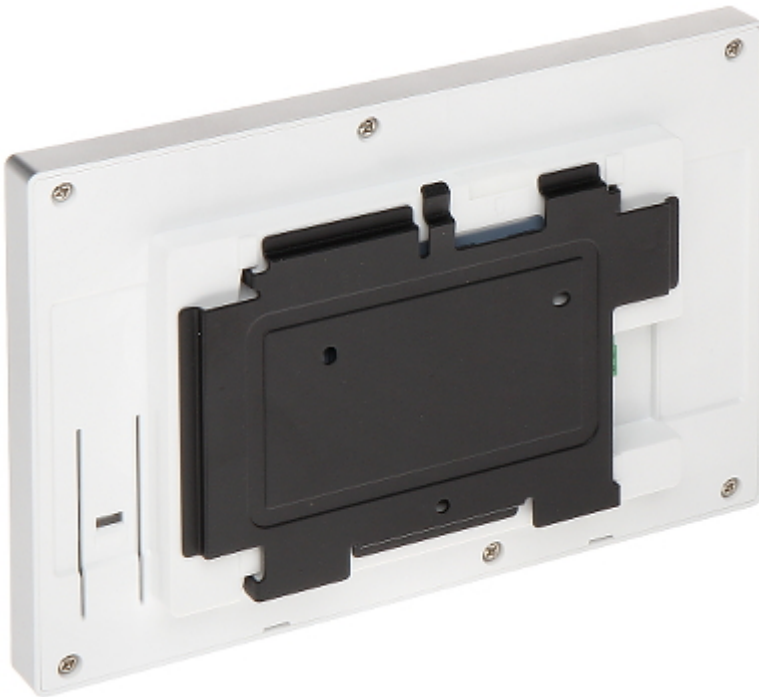
3 years

## PRESENTATION

Front view:

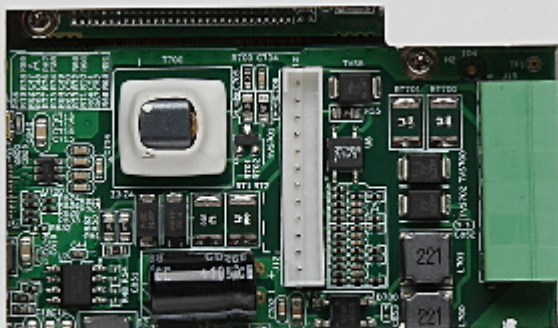
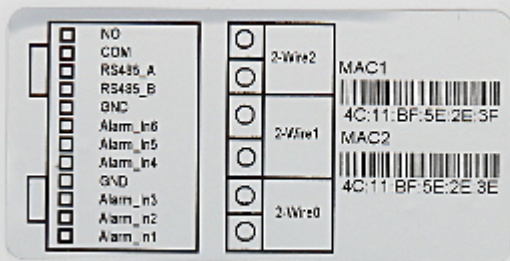


Rear view:



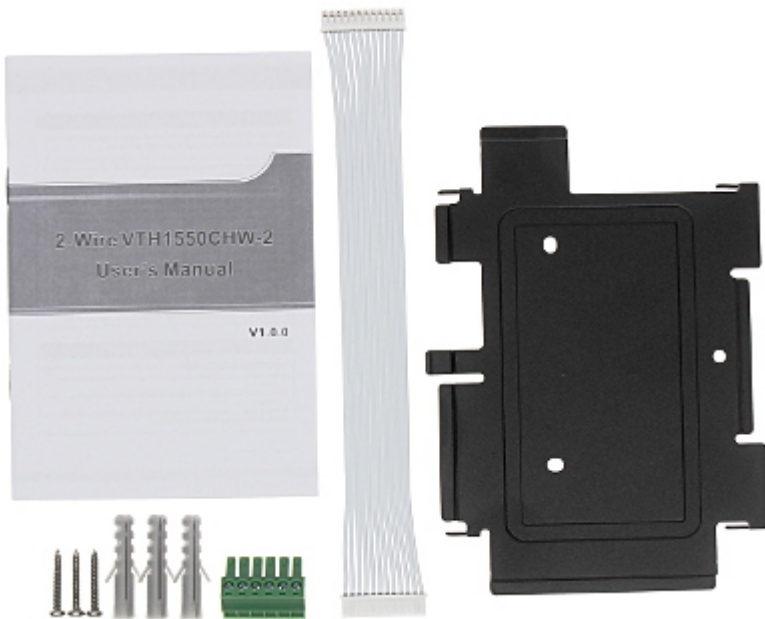


Connectors view:

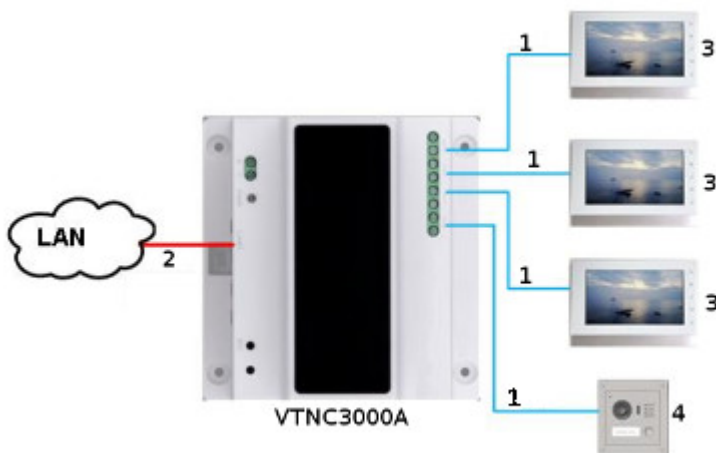




In the kit:



Connection schematic diagram:



- 1. 1-pair cable
- 2. Ethernet
- 3. INDOOR PANEL
- 4. Video doorphone

#### PACKAGE

Dimensions (L x W x H): 0x0x0 mm	Gross Weight: 0 kg
----------------------------------	--------------------

DELTA-OPTI Monika Matysiak; <https://www.delta.poznan.pl>  
 POL; 60-713 Poznań; Graniczna 10  
 e-mail: delta-opti@delta.poznan.pl; tel: +(48) 61 864 69 60



DELTA-OPTI Monika Matysiak; <https://www.delta.poznan.pl>  
POL; 60-713 Poznań; Graniczna 10  
e-mail: [delta-opti@delta.poznan.pl](mailto:delta-opti@delta.poznan.pl); tel: +(48) 61 864 69 60