

Code: DHI-VTH1550CH

INDOOR PANEL IP **DHI-VTH1550CH** DAHUA

Net: **248.38 EUR** Gross: **248.38 EUR**

The DHI-VTH1550CH panel has been designed to create a simple and effective system of local communication. The device works with video doorphones, and other DAHUA panels. It can be also used as simple alarm control panel, or notification module by the support 6 alarm inputs. **ATTENTION!** The device does not support the Dahua analogue system.



SPECIFICATION

Compatibility:	Interphone installation - DAHUA IP Protocol
Shield:	7 " TFT-LCD color matrix
Resolution:	800 x 480
Internal memory:	—
Main features:	<ul style="list-style-type: none">• Memory card slot,• Microphone built-in,• Speakers built-in,• Bidirectional communication,• Smooth adjustment of monitor parameters: image brightness, ring tone volume and conversation volume,• Automatically capture and save images if there is no response to the doorbell,• Records a short video message if there is no response to the doorbell button,• IP Dahua cameras support,• The ability of direct communication between two or more panels,• Admin password : 888888
Controlling:	One-touch action buttons + capacitive touch screen
Alarm inputs:	6
Power supply:	<ul style="list-style-type: none">• 10 V ... 15 V DC / 450 mA,• 24 V PoE - DAHUA IP Protocol
Operation temp:	-10 °C ... 60 °C
Color:	White
Weight:	0.526 kg
Dimensions:	200 x 137 x 28 mm
Supported languages:	English, Bulgarian, Czech, Finnish, Polish, Slovenian, Slovak, Hungarian

DELTA-OPTI Monika Matysiak; <https://www.delta.poznan.pl>
POL; 60-713 Poznań; Graniczna 10
e-mail: delta-opti@delta.poznan.pl; tel: +(48) 61 864 69 60

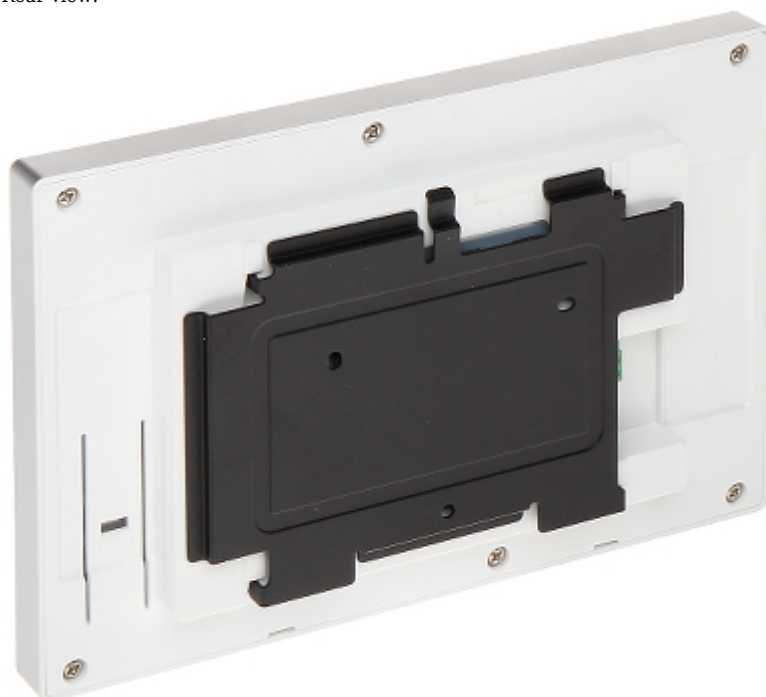
Manufacturer / Brand:	DAHUA
Guarantee:	3 years

PRESENTATION

Front view:

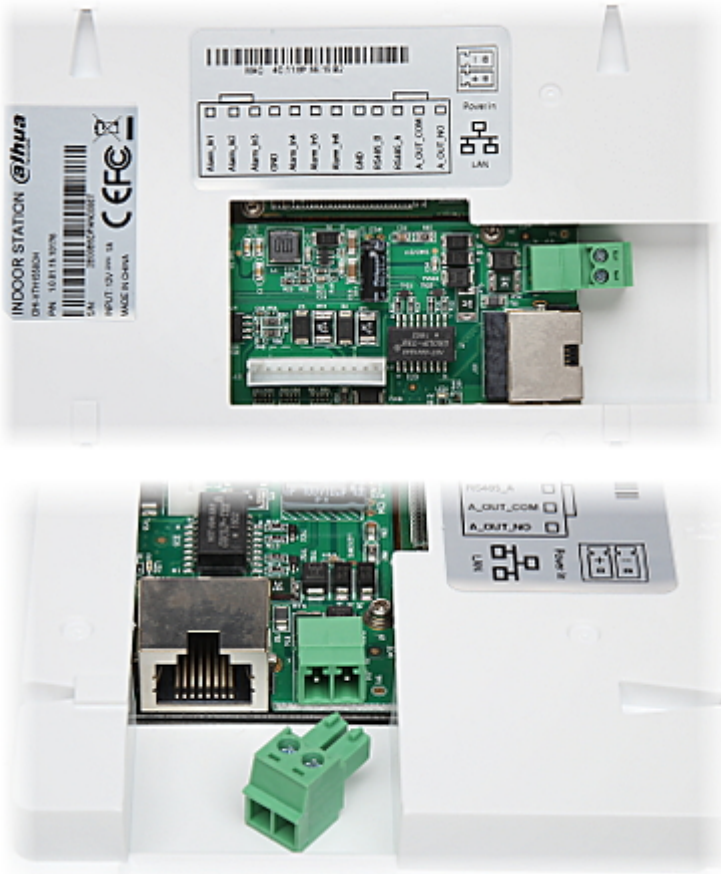


Rear view:





Connectors view:



In the kit:



Example of application:



- 1. INDOOR PANEL
- 2. Video doorphone
- 3. DHI-VTNS1060A
- 4. Hub / Switch
- 5. System management center
- 6. Remote client

PACKAGE

Dimensions (L x W x H): 0x0x0 mm	Gross Weight: 0 kg
----------------------------------	--------------------