

Code: DS-KIS702

VIDEO DOORPHONE KIT **DS-KIS702** Hikvision

Net: 2 299.00 PLN Gross: 2 299.00 PLN

Two-wire HIKVISION video doorphone system with 7" touch monitor and controller equipped with 4 2-wire buses. Video Doorphone is mounted in a surface housing.

The device has the ability to work with the [Hik-Connect](#) application for mobile devices.

The attached DS-KAD704 controller also enables the connection of the video doorphone system to the LAN network and via it to the Internet.



SPECIFICATION

Compatibility:	HIKVISION 2-wire
Doorbell button:	1 pcs
Sensor:	2.1 Mpx CMOS
Camera resolution:	1920 x 1080 - 1080p
Camera view angle:	180 °
Image compression method:	H.264
IR illuminator:	✓
Network protocols:	TCP/IP, RTSP
Alarm inputs:	4 pcs
Relay outputs:	2 x NO/NC
Main features:	<ul style="list-style-type: none">• Bidirectional communication,• Microphone built-in,• Speakers built-in,• Noise suppression and echo cancellation,• Tamper detection - removing from mounting surface ,
Power supply:	<ul style="list-style-type: none">• 24 V DC - HIKVISION 2-wire• 12 V DC (power adapter not included)
Power consumption:	<ul style="list-style-type: none">< 16 W @ 24 V DC< 20 W @ 12 V DC
Operation temp:	-40 °C ... 60 °C
Housing:	Metal
Color:	Black
"Index of Protection":	IP65
Weight:	0.38 kg

DELTA-OPTI Monika Matysiak; <https://www.delta.poznan.pl>
POL; 60-713 Poznań; Graniczna 10
e-mail: delta-opti@delta.poznan.pl; tel: +(48) 61 864 69 60

Dimensions:	100 x 98 x 44 mm
-------------	------------------

INDOOR PANEL:

Compatibility:	Hikvision 2-wire modular video doorphones
Shield:	7 " - capacitive touch screen
Resolution:	1024 x 600
Internal memory:	128 MB (built-in)
Main features:	<ul style="list-style-type: none"> • Wi-Fi Module - IEEE 802.11 b/g/n, • Microphone built-in, • Speakers built-in, • Bidirectional communication, • Smooth adjustment of monitor parameters: image brightness, ring tone volume and conversation volume, • Automatically capture and save photos if there is no response to the bell button, • IP Hikvision cameras support, • The ability of direct communication between two or more panels, • Register a short voice message if there is no response to the bell button • Support for capturing a photo during video calls • The microSD - max. 32 GB cards support - 16 GB included, • The device is fully configurable via the iVMS4200 software. • In addition, the device has the ability to work with the Hik-Connect application on mobile devices
Controlling:	capacitive touch screen
Default administrator password:	— The administrator password should be set at the first start
Default password for securing the zone:	—
Alarm inputs:	8
Alarm outputs:	2
Power supply:	24 V DC - HIKVISION 2-wire
Power consumption:	≤ 6 W
Color:	Black + Silver
Operation temp:	-10 °C ... 50 °C
Weight:	0.33 kg
Dimensions:	200 x 140 x 25 mm

ENCLOSURE:

Number of mounted modules:	1 pcs
Material:	Aluminum
Color:	Graphite
Weight:	0.32 kg
External dimensions:	117 x 107 x 37 mm

Switch:

Number of ports:	4 x HIKVISION 2-wire , 1 x RJ-45
Compatibility:	2-wire doorphone installation Hikvision
Main features:	DIN, TS-35 rail mounting
Power supply:	24 V DC
Housing:	Plastic
Operation temp:	-10 °C ... 50 °C
Weight:	0.25 kg
Dimensions:	144 x 90 x 66 mm



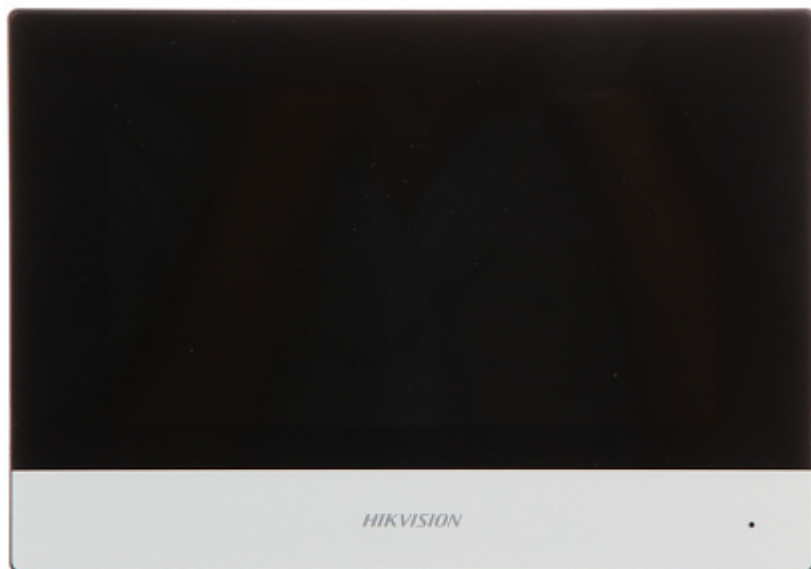
DELTA-OPTI Monika Matysiak; <https://www.delta.poznan.pl>
 POL; 60-713 Poznań; Graniczna 10
 e-mail: delta-opti@delta.poznan.pl; tel: +(48) 61 864 69 60

General information:

Supported languages:	Polish, English, Bulgarian, Croatian, Czech, French, Greek, Spanish, Dutch, German, Portuguese, Romanian, Serbian, Hungarian, Italian
Manufacturer / Brand:	Hikvision
SAP Code:	305301917
Guarantee:	3 years

PRESENTATION

INDOOR PANEL:



Mounting side view:



Connectors:



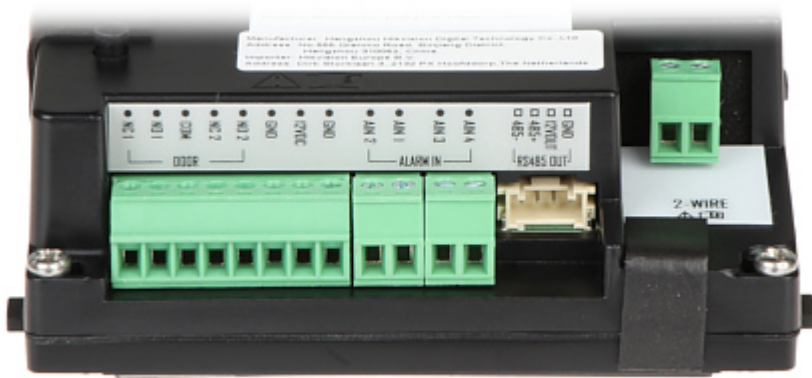
DELTA-OPTI Monika Matysiak; <https://www.delta.poznan.pl>
POL; 60-713 Poznań; Graniczna 10
e-mail: delta-opti@delta.poznan.pl; tel: +(48) 61 864 69 60



Mounting side view:



Connectors:



SWITCH :



Mounting side view:



Connectors:



DELTA-OPTI Monika Matysiak; <https://www.delta.poznan.pl>
POL; 60-713 Poznań; Graniczna 10
e-mail: delta-opti@delta.poznan.pl; tel: +(48) 61 864 69 60



Power adapter:



Mounting side view:





Connectors:



In the kit:



PACKAGE

Dimensions (L x W x H): 0x0x0 mm	Gross Weight: 0 kg
----------------------------------	--------------------

