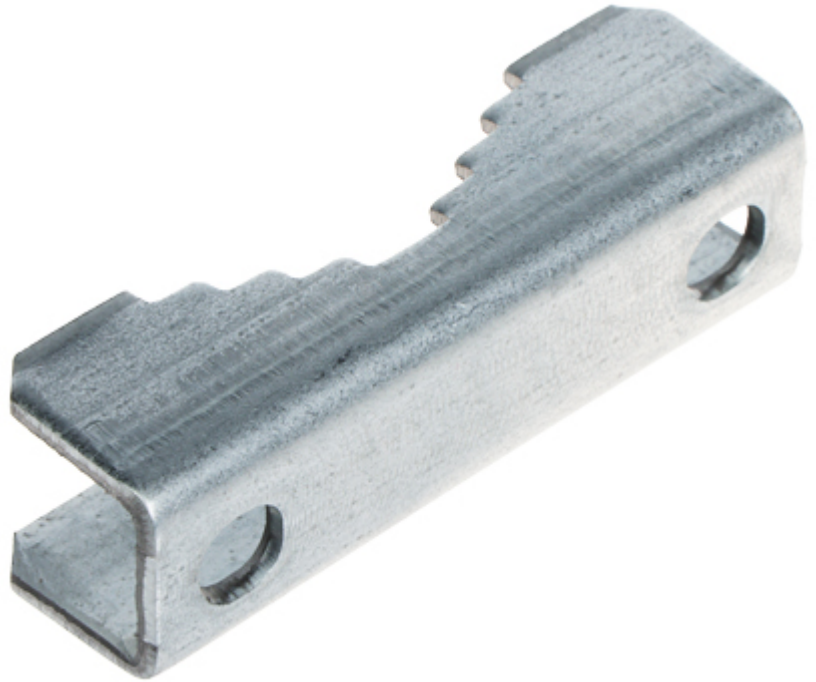


Code: KL-50

## CLAMP KL-50

Net: 0.42 EUR Gross: 0.42 EUR

The KL-50 is the element of clamp.

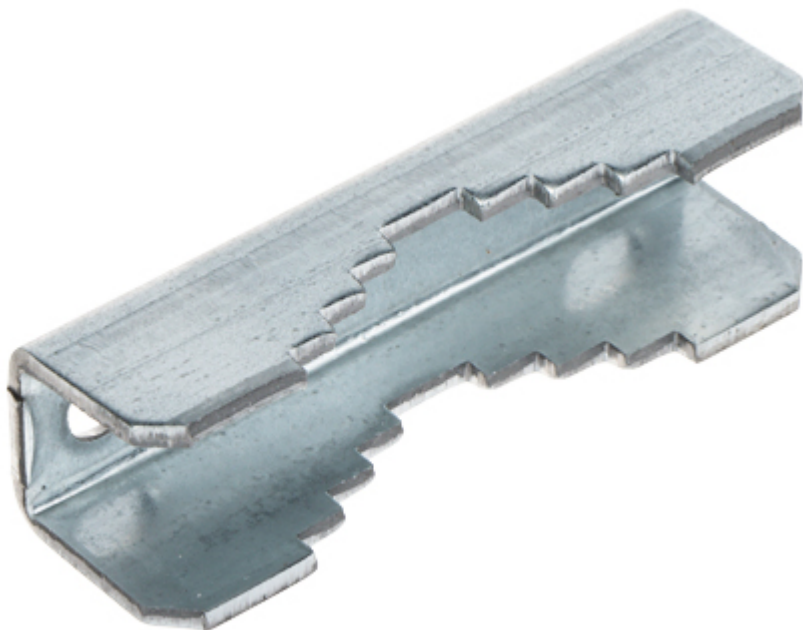


### SPECIFICATION

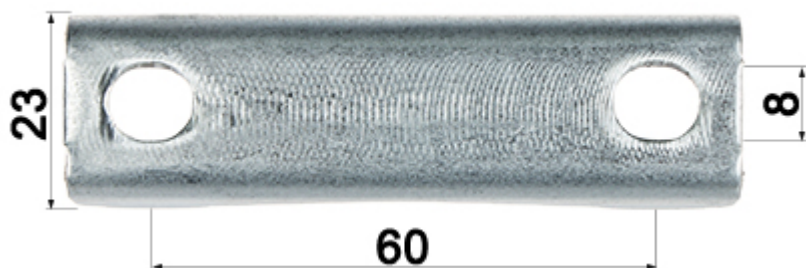
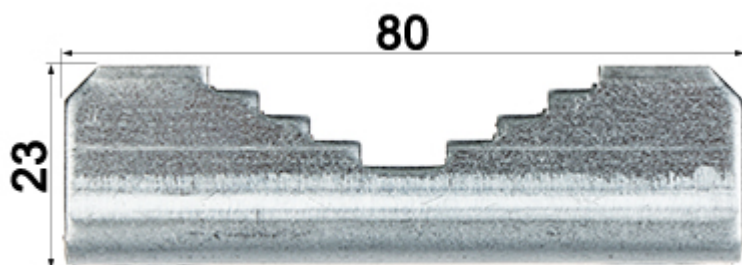
Material:	Steel galvanized - Hot-dip galvanized
Mast diameter:	max. 50 mm
U-bolt diameter:	max. Ø 8 mm
Main features:	<ul style="list-style-type: none"><li>• Plate thickness : 2.5 mm</li><li>• Whole element is hot-dip galvanized</li></ul>
Manufacturer / Brand:	DELTA
Guarantee:	<b>3 years</b>

### PRESENTATION





Dimensions:



**PACKAGE**

Dimensions (L x W x H): 0x0x0 mm	Gross Weight: 0 kg
----------------------------------	--------------------



DELTA-OPTI Monika Matysiak; <https://www.delta.poznan.pl>  
POL; 60-713 Poznań; Graniczna 10  
e-mail: delta-opti@delta.poznan.pl; tel: +(48) 61 864 69 60