

Code: SP-160-MS

## SOLAR PANEL **SP-160-MS** RIGID IN AN ALUMINUM FRAME

Net: **156.48 EUR** Gross: **156.48 EUR**

Solar panels are a clean and ecological source of electricity. Depending on their size and structure, they can be used to create installations capable of supplying power to the entire building, as well as small temporary or mobile circuits.

The SP-160-MS panel with a rigid structure is a perfect solution for creating small solar installations.

The rigid structure of the panel makes it the best solution for small solar installations mounted for a long time without the intention of changing the position of the panels. Examples include installations on the roof of a summer house, on the roof of a yacht or in the garden.

Thanks to the light, rigid aluminum frame and the glass front, the panels are more resistant to mechanical damage caused by e.g. hailstones. The rigid structure also allows the panels to be installed using standard frames and holders dedicated to solar panels.

**ATTENTION!** After reaching its own temperature of 80°C, the panel is irreparably damaged, therefore it is extremely important to provide it with adequate cooling during operation. When mounting on a frame or rack, remember to keep a few centimeters (recommended 5 ... 10 cm) of gap between the panel plane and the surface to which it is mounted in order to ensure natural ventilation.



### SPECIFICATION

Maximum power:	160 W
Maximum Power Current ( $I_{mp}$ ):	7.21 A
Maximum Power Voltage ( $V_{mp}$ ):	22 V
Short-circuit Current ( $I_{sc}$ ):	7.71 A
Open-circuit Voltage ( $V_{oc}$ ):	25.96 V
Length of the cables:	2 x 1 m
Cell Type:	Monocrystalline
Panel Structure:	Rigid in an aluminum frame
Weight:	8.8 kg
Dimensions:	1230 x 670 x 30 mm
Manufacturer / Brand:	SolarFam
Guarantee:	2 years

### PRESENTATION

Rear view:



DELTA-OPTI Monika Matysiak; <https://www.delta.poznan.pl>  
POL; 60-713 Poznań; Graniczna 10  
e-mail: [delta-opti@delta.poznan.pl](mailto:delta-opti@delta.poznan.pl); tel: +(48) 61 864 69 60



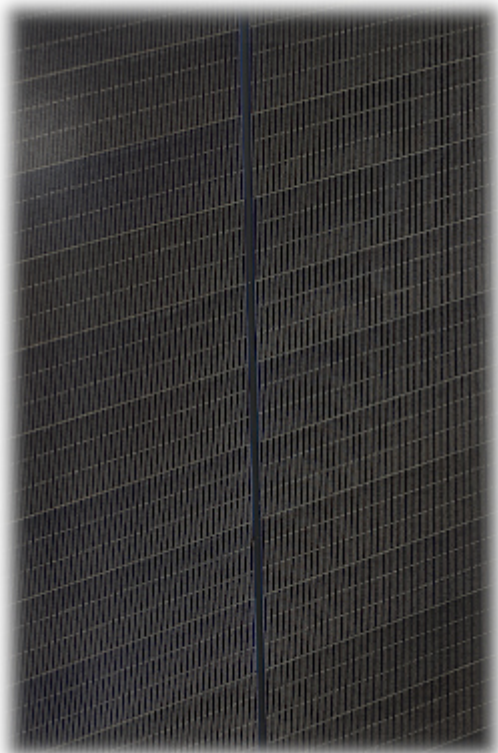
Connecting cables:



Connectors:



Front view:



## PACKAGE

Dimensions (L x W x H): 0x0x0 mm	Gross Weight: 0 kg
----------------------------------	--------------------



DELTA-OPTI Monika Matysiak; <https://www.delta.poznan.pl>  
POL; 60-713 Poznań; Graniczna 10  
e-mail: [delta-opti@delta.poznan.pl](mailto:delta-opti@delta.poznan.pl); tel: +(48) 61 864 69 60