

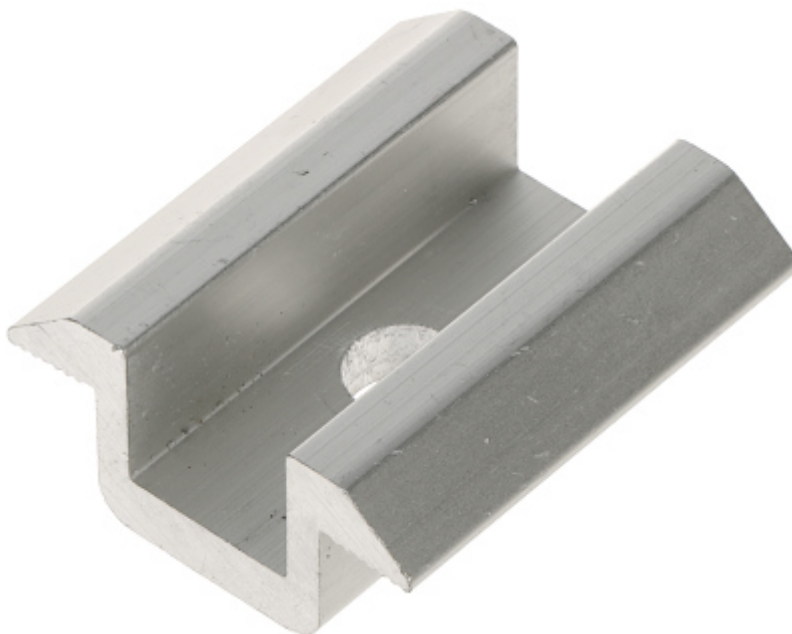
Code: USP-KW-35

UNIVERSAL MIDDLE CLAMP **USP-KW-35** FOR SOLAR PANELS

Net: **0.49 EUR** Gross: **0.49 EUR**

The USP-KW-35 middle clamp is used to fix the solar panels to the mounting rails. The surface pressing the panel frame is grooved, which guarantees better grip of the panel.

The middle clamp is mounted between two solar panels. The size of the clamp is universal, you only need to adjust the length of the fixing screw to the height of the frame of the panel used.



SPECIFICATION

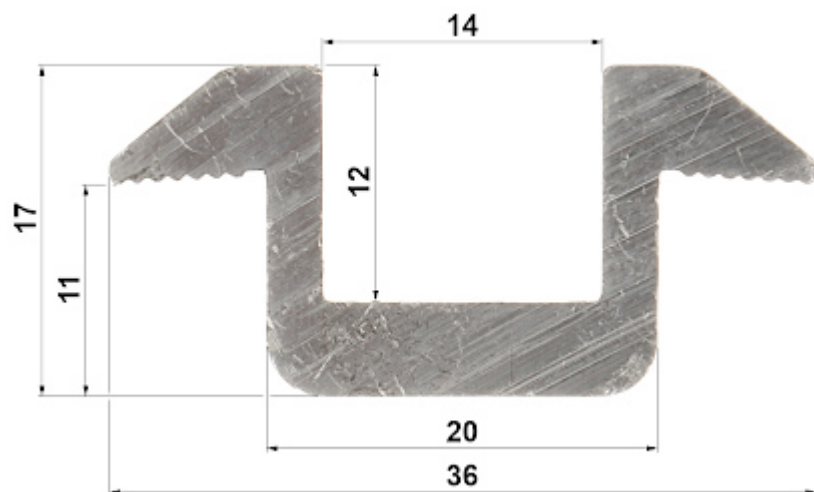
Material:	Aluminum
Height:	11 mm
Hole diameter:	9 mm
mounting screw:	M8 x 45 (included)
Weight:	0.05 kg
Dimensions:	40 x 36 x 17 mm
Guarantee:	2 years

PRESENTATION

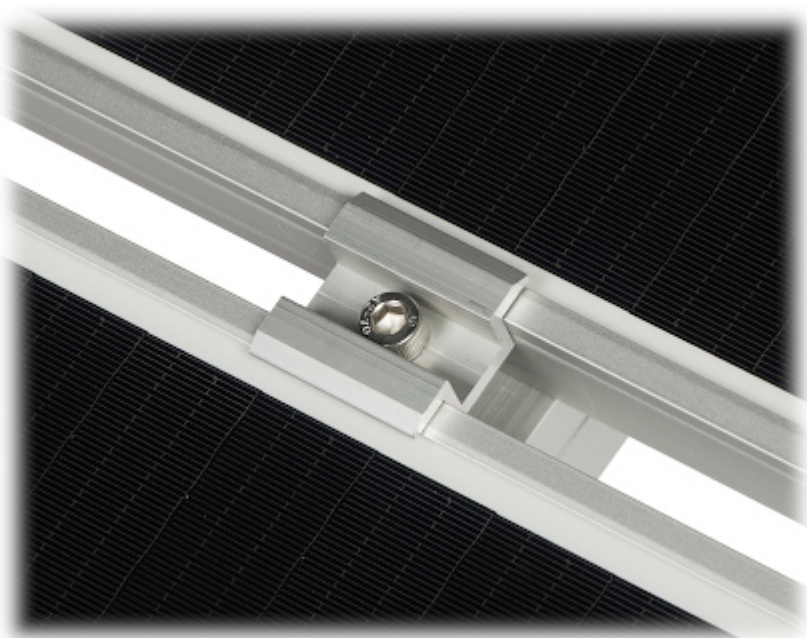
DELTA-OPTI Monika Matysiak; <https://www.delta.poznan.pl>
POL; 60-713 Poznań; Graniczna 10
e-mail: delta-opti@delta.poznan.pl; tel: +(48) 61 864 69 60



Dimensions:



Example of application:



In the kit:

DELTA-OPTI Monika Matysiak; <https://www.delta.poznan.pl>
POL; 60-713 Poznań; Graniczna 10
e-mail: delta-opti@delta.poznan.pl; tel: +(48) 61 864 69 60



PACKAGE

Dimensions (L x W x H): 0x0x0 mm	Gross Weight: 0 kg
----------------------------------	--------------------

