

Code: APTI-W21C4G-TUYA

IP CAMERA **APTI-W21C4G-TUYA** Tuya Smart 4G/LTE - 1080p 3.6 mm

Net: **300.00 PLN** Gross: **300.00 PLN**

The cameras cooperating with the user-friendly Tuya platform have been designed with special care to simplify the configuration process and enable the user to create a simple and effective monitoring system.

The camera works with the 4G/LTE network and the connection is made on a plug and play basis - just install a nanoSIM card and the device will establish an Internet connection by itself - this solution allows the camera to be used wherever there is an operator network coverage. Very easy operation via mobile devices (Android / iOS), allows the users for comfortable and remote operation, and also management of the camera.

Attention! Devices cooperating with the Tuya platform do not have a WEB interface. The camera works only with the mobile application (the camera does not work with recorders). Controlling the device and schedule settings is possible if the device has access to the Internet.



SPECIFICATION

Standard:	TCP/IP
Sensor:	1/2 " Progressive Scan CMOS
Matrix size:	2.1 Mpx
Resolution:	1920 x 1080 - 1080p 640 x 360
Lens:	3.6 mm
View angle:	<ul style="list-style-type: none">• 99 ° (manufacturer data)• 82 ° (our tests result)
Range of IR illumination:	10 m
White light LED illuminator range:	25 m
Audio:	<ul style="list-style-type: none">• Microphone built-in,• Speaker built-in,• Audio transmission via network,• Bi-directional audio streaming support
Image compression method:	H.265
Main stream frame rate:	<ul style="list-style-type: none">• 15 fps @ 1080p• 25 fps @ 640 x 360 px
Network protocols:	TCP/IP, P2P
Network interface:	4G LTE
ONVIF:	—



DELTA-OPTI Monika Matysiak; <https://www.delta.poznan.pl>
POL; 60-713 Poznań; Graniczna 10
e-mail: delta-opti@delta.poznan.pl; tel: +(48) 61 864 69 60

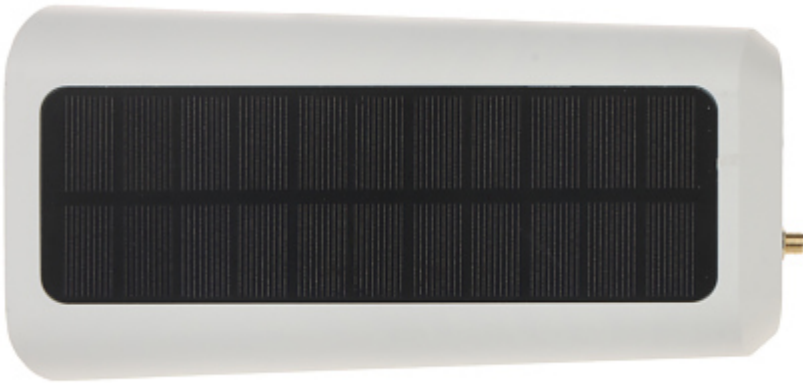
WEB Server:	—
Mobile phones support:	<ul style="list-style-type: none"> Access by a cloud (P2P) • The Tuya Smart free application on Android • The Tuya Smart free application on iOS
Default IP address:	DHCP
Web browser access ports:	—
PC client access ports:	—
Mobile client access ports:	—
Port ONVIF:	—
RTSP URL:	—
Memory card slot:	Micro SD memory cards up to 64GB support (possible local recording)
Main features:	<ul style="list-style-type: none"> • 4G LTE support • WDR - Wide Dynamic Range • BLC/HLC - Back Light / High Light Compensation • Anti-Flicker - The technology eliminates the tiring eyes flickering image effect • Day/night mode • ICR - Movable InfraRed filter • Motion Detection - Built-in PIR detector • Operation status LED indicator • USB C interface • RESET button
Battery operation time:	max. 60 days
Charging time (recover to 100% capacity):	6 h from USB port
Power supply:	<ul style="list-style-type: none"> • 4 x Li-Ion battery ICR18650 - 3.7 V / 3200 mAh (included), • Solar Panel : 1.6 W, • 5 V DC - USB-C socket (power adapter not included)
Housing:	Metal
"Index of Protection":	IP67
Weight:	<ul style="list-style-type: none"> • 0.77 kg • 0.91 kg (with bracket)
Dimensions:	<ul style="list-style-type: none"> • 200 x 96 x 67 mm • 305 x 96 x 125 mm (with bracket)
Operation temp:	-30 °C ... 60 °C
Supported languages:	English
Manufacturer / Brand:	APTI
Guarantee:	2 years

PRESENTATION





Solar Panel:



Bottom view:





Memory card slot, USB C and "Reset" button:



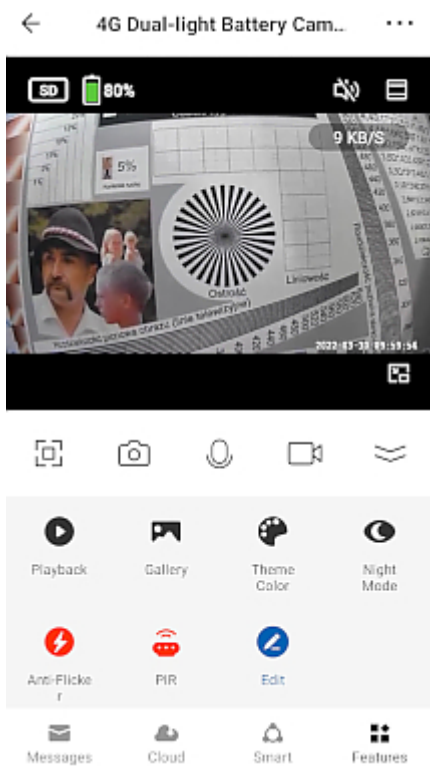
Antenna connector:



In the kit:



Sample interface screenshot:



OUR TESTS

Camera image at artificial illumination (about 30Lux):



Camera image at night conditions with internal built-in LED illuminator on:



Camera image at night conditions with internal built-in IR illuminator on:



Camera image at direct strong light opposite to camera:



PACKAGE

Dimensions (L x W x H): 0x0x0 mm	Gross Weight: 0 kg
----------------------------------	--------------------